

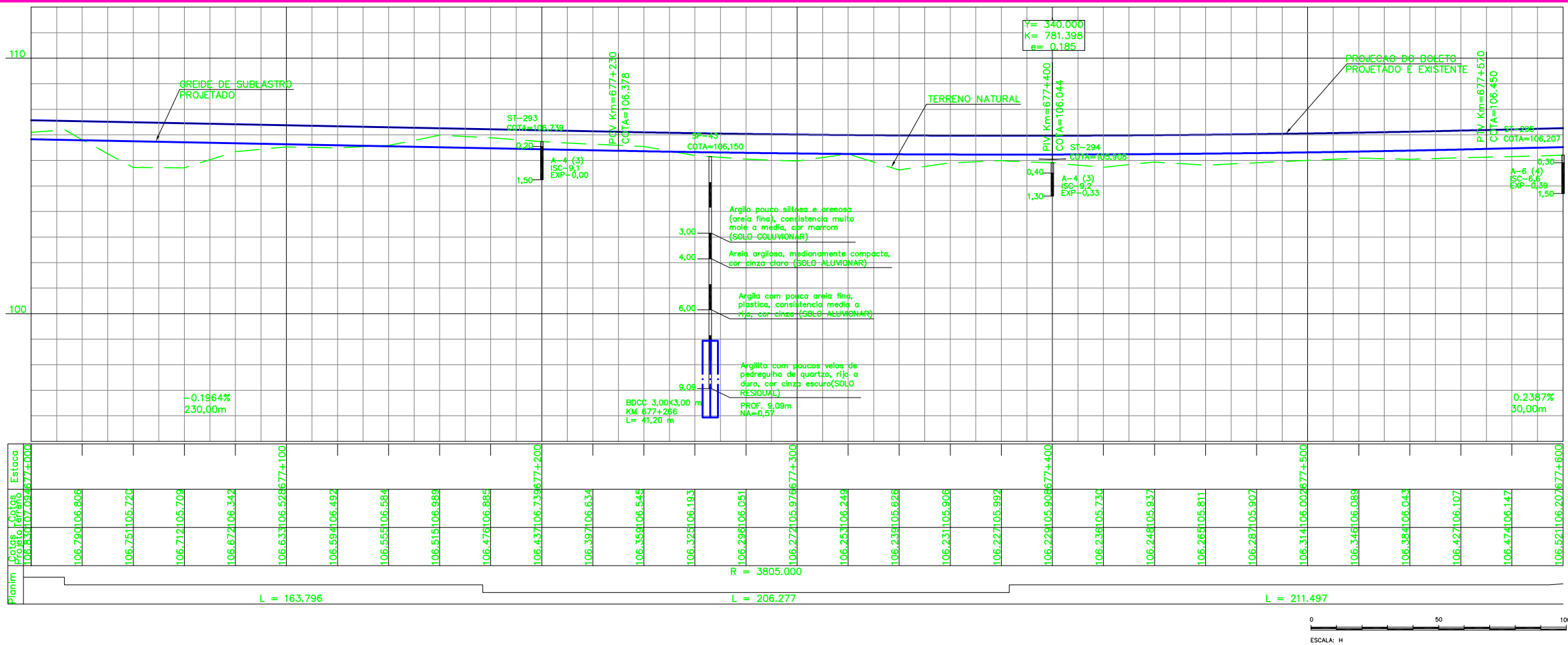
LEGENDA

EXISTENTE	PROJETO

CADASTRO	
	D = DIAMETRO
	LE = COMPRIMENTO
	e = ESCONSIDADE
	i = DECLIVIDADE
	BSTC BUEIRO SIMPLES TUBULAR DE CONCRETO
	BSCC BUEIRO SIMPLES CELULAR DE CONCRETO
	BDCC BUEIRO DUPLO CELULAR DE CONCRETO

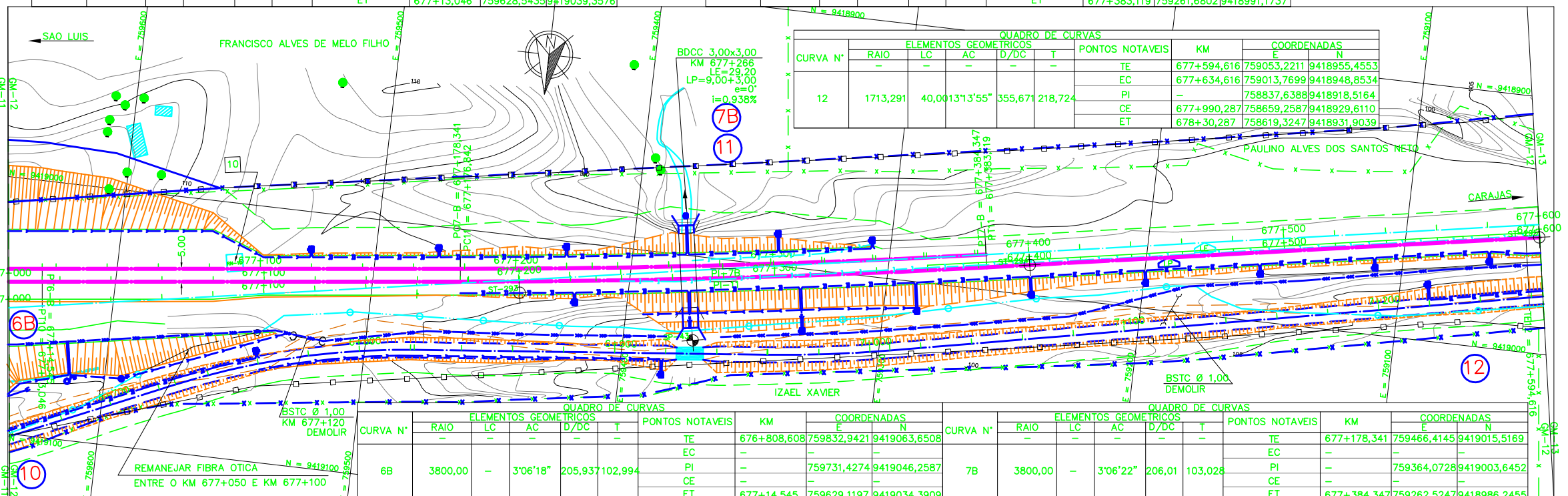
PROJETADO	
	D = DIAMETRO
	LE = COMPRIMENTO
	e = ESCONSIDADE
	i = DECLIVIDADE
	BDCC BUEIRO DUPLO CELULAR DE CONCRETO

	INDICACAO DE COORDENADAS-MARCOS
	INDICACAO DE NORTE
	SP-N° SONDAGEM A PERCUSSAO
	ST-N° SONDAGEM A TRADO



QUADRO DE CURVAS										
CURVA N°	ELEMENTOS GEOMETRICOS					PONTOS NOTAVEIS	KM	COORDENADAS		
	RAIO	LC	AC	D/DC	T			E	N	N
10	3795,00	-	3'06"18"	205,666	102,858	TE	676+807,380	759832,0976	9419068,5790	
						EC	-	-	-	
						PI	-	759730,7166	9419051,2098	
						CE	-	-	-	
						ET	677+13,046	759628,5435	9419039,3576	

QUADRO DE CURVAS										
CURVA N°	ELEMENTOS GEOMETRICOS					PONTOS NOTAVEIS	KM	COORDENADAS		
	RAIO	LC	AC	D/DC	T			E	N	N
11	3805,00	-	3'06"22"	206,277	103,164	TE	677+176,842	759465,8384	9419020,4837	
						EC	-	-	-	
						PI	-	759363,3620	9419008,5963	
						CE	-	-	-	
						ET	677+383,119	759261,6802	9418991,1737	



QUADRO DE CURVAS										
CURVA N°	ELEMENTOS GEOMETRICOS					PONTOS NOTAVEIS	KM	COORDENADAS		
	RAIO	LC	AC	D/DC	T			E	N	N
6B	3800,00	-	3'06"18"	205,937	102,994	TE	676+808,608	759832,9421	9419063,6508	
						EC	-	-	-	
						PI	-	759731,4274	9419046,2587	
						CE	-	-	-	
						ET	677+14,545	759629,1197	9419034,3909	

QUADRO DE CURVAS										
CURVA N°	ELEMENTOS GEOMETRICOS					PONTOS NOTAVEIS	KM	COORDENADAS		
	RAIO	LC	AC	D/DC	T			E	N	N
7B	3800,00	-	3'06"22"	206,01	103,028	TE	677+178,341	759466,4145	9419015,5169	
						EC	-	-	-	
						PI	-	759364,0728	9419003,6452	
						CE	-	-	-	
						ET	677+384,347	759262,5247	9418986,2455	

NOTAS

- AS MEDIDAS ESTAO EM METRO, EXCETO ONDE INDICADO.
- AS COORDENADAS ESTAO NO SISTEMA UTM SAD-69, MC -45 (CVRD).
- SE PLOTADO EM A3, A ESCALA SERA 1:2000.

DOCUMENTOS DE REFERENCIA	
250K-Y-11440	CAD
250K-Y-09601	PRE
250K-Y-11434	SUP
250K-Y-09604	ASV
250K-Y-09605	TR
250K-Y-09606	TR
250K-Y-09607	TR
250K-Y-09608	TR
250K-Y-09609	TR
250K-Y-09610	TR
250K-Y-09611	TR
250K-Y-09612	TR
250K-Y-09613	TR
250K-Y-09614	TR
250K-Y-09615	TR
250K-Y-09616	TR
250K-Y-09617	TR
250K-Y-09618	TR
250K-Y-09619	TR
250K-Y-09620	TR
250K-Y-09621	TR
250K-Y-09622	TR
250K-Y-09623	TR
250K-Y-09624	TR
250K-Y-09625	TR
250K-Y-09626	TR
250K-Y-09627	TR
250K-Y-09628	TR
250K-Y-09629	TR
250K-Y-09630	TR
250K-Y-09631	TR
250K-Y-09632	TR
250K-Y-09633	TR
250K-Y-09634	TR
250K-Y-09635	TR
250K-Y-09636	TR
250K-Y-09637	TR
250K-Y-09638	TR
250K-Y-09639	TR
250K-Y-09640	TR
250K-Y-09641	TR
250K-Y-09642	TR
250K-Y-09643	TR
250K-Y-09644	TR
250K-Y-09645	TR
250K-Y-09646	TR
250K-Y-09647	TR
250K-Y-09648	TR
250K-Y-09649	TR
250K-Y-09650	TR
250K-Y-09651	TR
250K-Y-09652	TR
250K-Y-09653	TR
250K-Y-09654	TR
250K-Y-09655	TR
250K-Y-09656	TR
250K-Y-09657	TR
250K-Y-09658	TR
250K-Y-09659	TR
250K-Y-09660	TR
250K-Y-09661	TR
250K-Y-09662	TR
250K-Y-09663	TR
250K-Y-09664	TR
250K-Y-09665	TR
250K-Y-09666	TR
250K-Y-09667	TR
250K-Y-09668	TR
250K-Y-09669	TR
250K-Y-09670	TR
250K-Y-09671	TR
250K-Y-09672	TR
250K-Y-09673	TR
250K-Y-09674	TR
250K-Y-09675	TR
250K-Y-09676	TR
250K-Y-09677	TR
250K-Y-09678	TR
250K-Y-09679	TR
250K-Y-09680	TR
250K-Y-09681	TR
250K-Y-09682	TR
250K-Y-09683	TR
250K-Y-09684	TR
250K-Y-09685	TR
250K-Y-09686	TR
250K-Y-09687	TR
250K-Y-09688	TR
250K-Y-09689	TR
250K-Y-09690	TR
250K-Y-09691	TR
250K-Y-09692	TR
250K-Y-09693	TR
250K-Y-09694	TR
250K-Y-09695	TR
250K-Y-09696	TR
250K-Y-09697	TR
250K-Y-09698	TR
250K-Y-09699	TR
250K-Y-09700	TR

REVISOES							
REV.	T.E.	DESCRICAO	PROJ.	DES.	VER.	APR.	DATA
0	C	VALIDADO ATENDENDO A RAP RL-200K-G-23047	GLO	WSL	PHT	MAS	22/07/09
B	B	FALTA ATENDER AOS COMENTARIOS DO RL-200K-G-23047	GLO	WSL	PHT	MAS	22/04/09
A	B	EMISSAO PARA APROVACAO	GLO	WSL	PHT	MAS	25/02/09
REV.	T.E.	DESCRICAO	PROJ.	DES.	VER.	APR.	DATA

ESTRADA DE FERRO CARAJAS N1030-02

FERROVIA - KM 541,05 A KM 891,361

PROGRAMA CAPACITACAO LOGISTICA NORTE - LOTE 06

SEGMENTO KM 670-628 AO KM 682+214

PROJETO GEOMETRICO-PLANTA PERFIL- KM 677+000 AO KM 677+600

ESCALA SE	N° CONTRATADA	N° VALE	REVISAO
1:1000	L6B5-532-GM-012	250K-B-09474	0