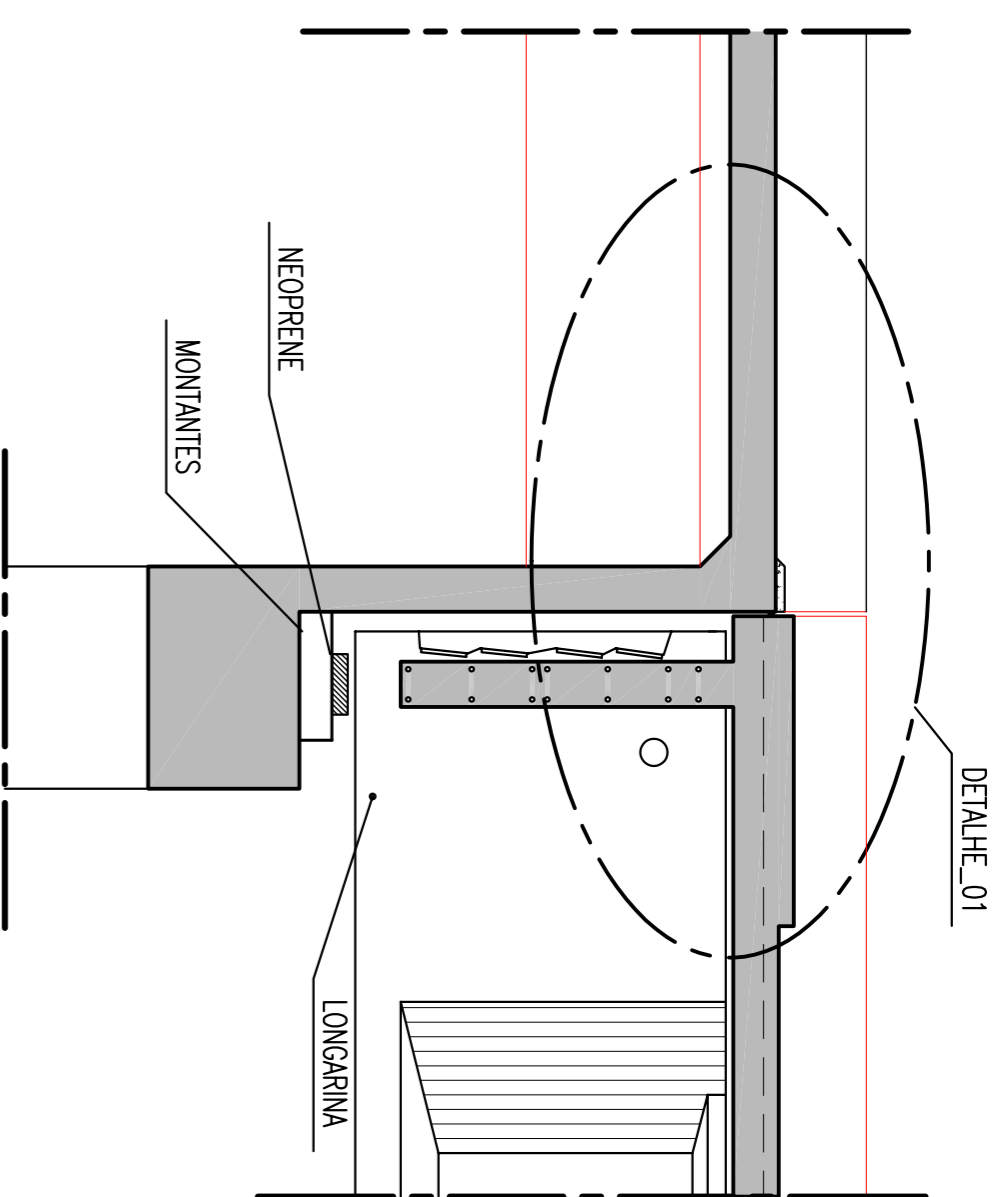


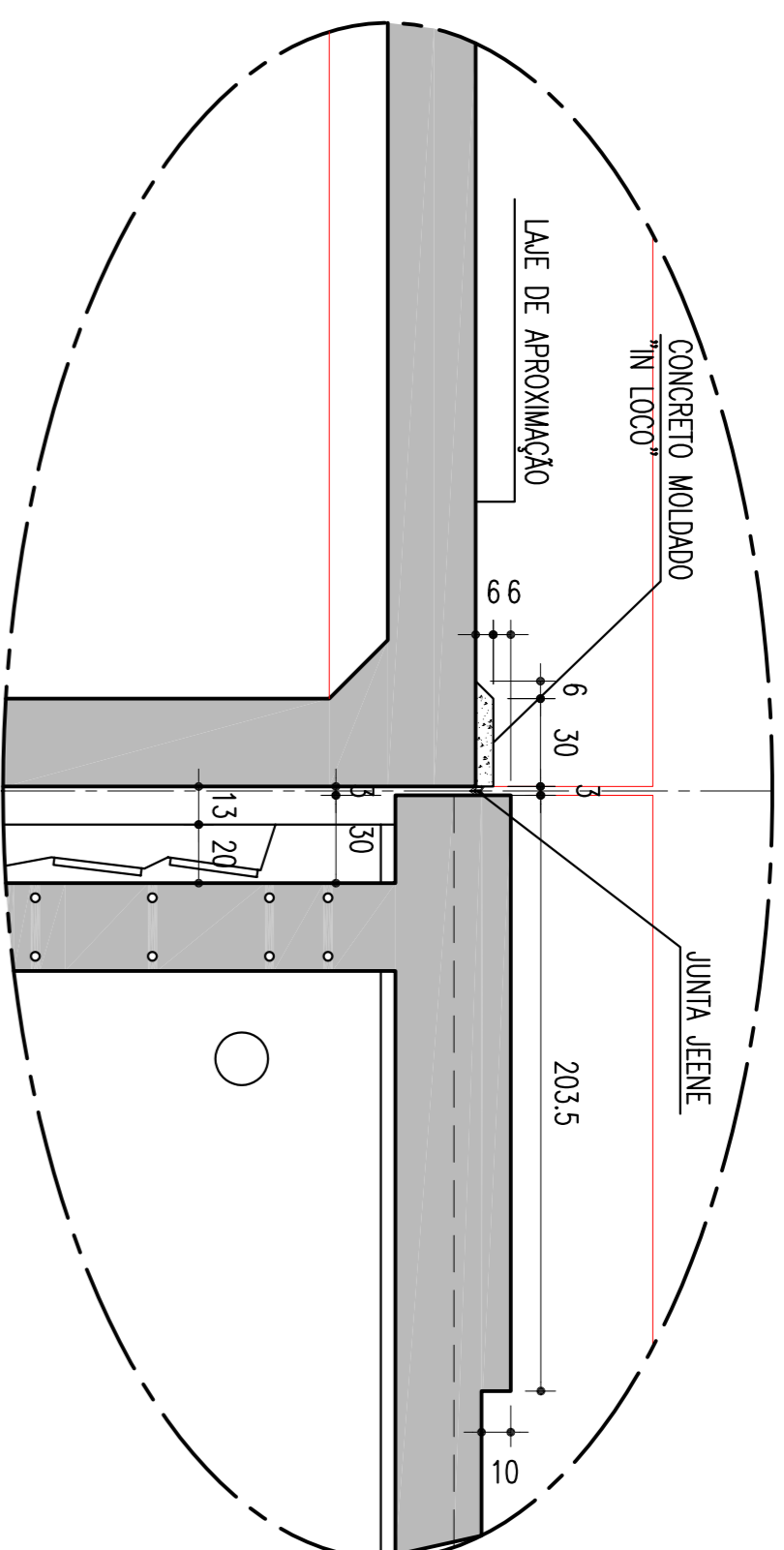
JUNTAS COM OS ENCONTROS (x2)

ESCALA = 1:50



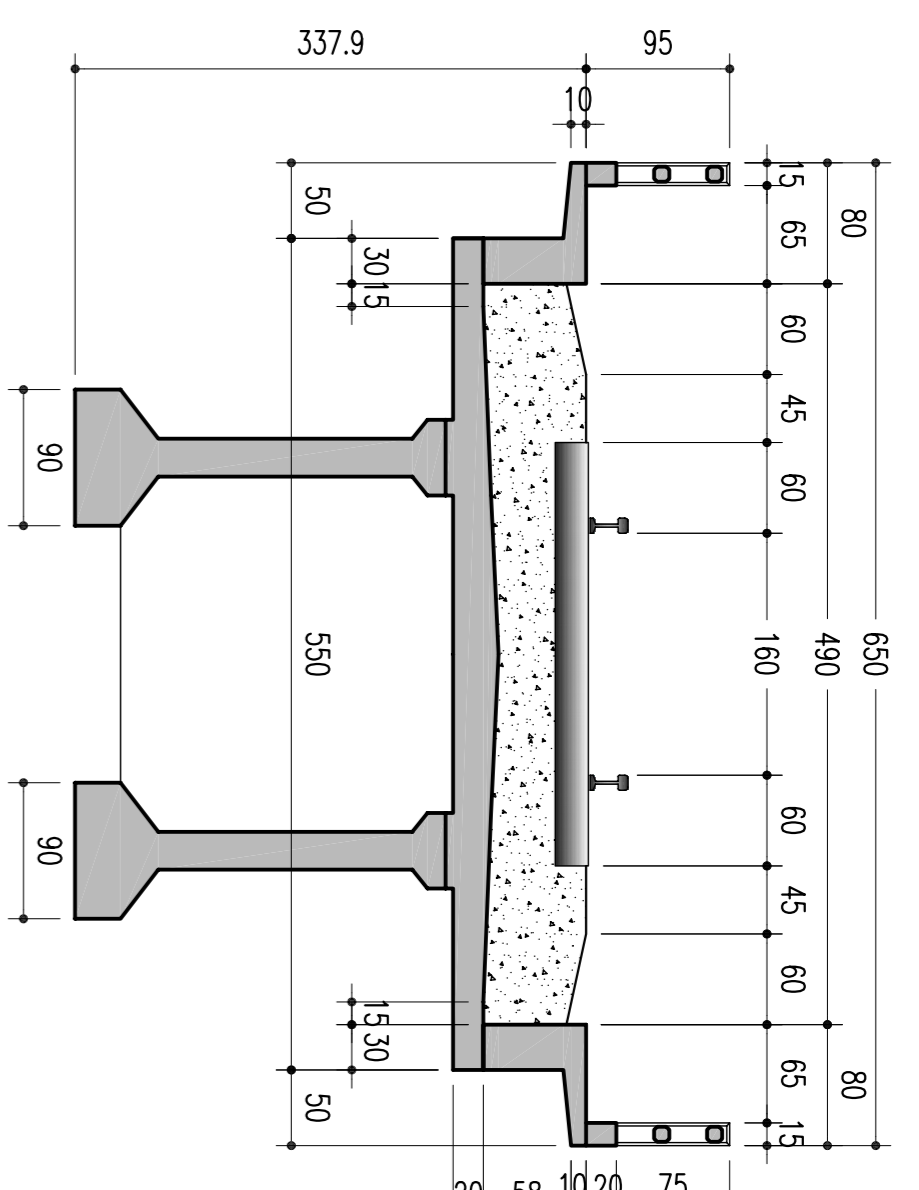
DETALHE\_01

ESCALA = 1:25



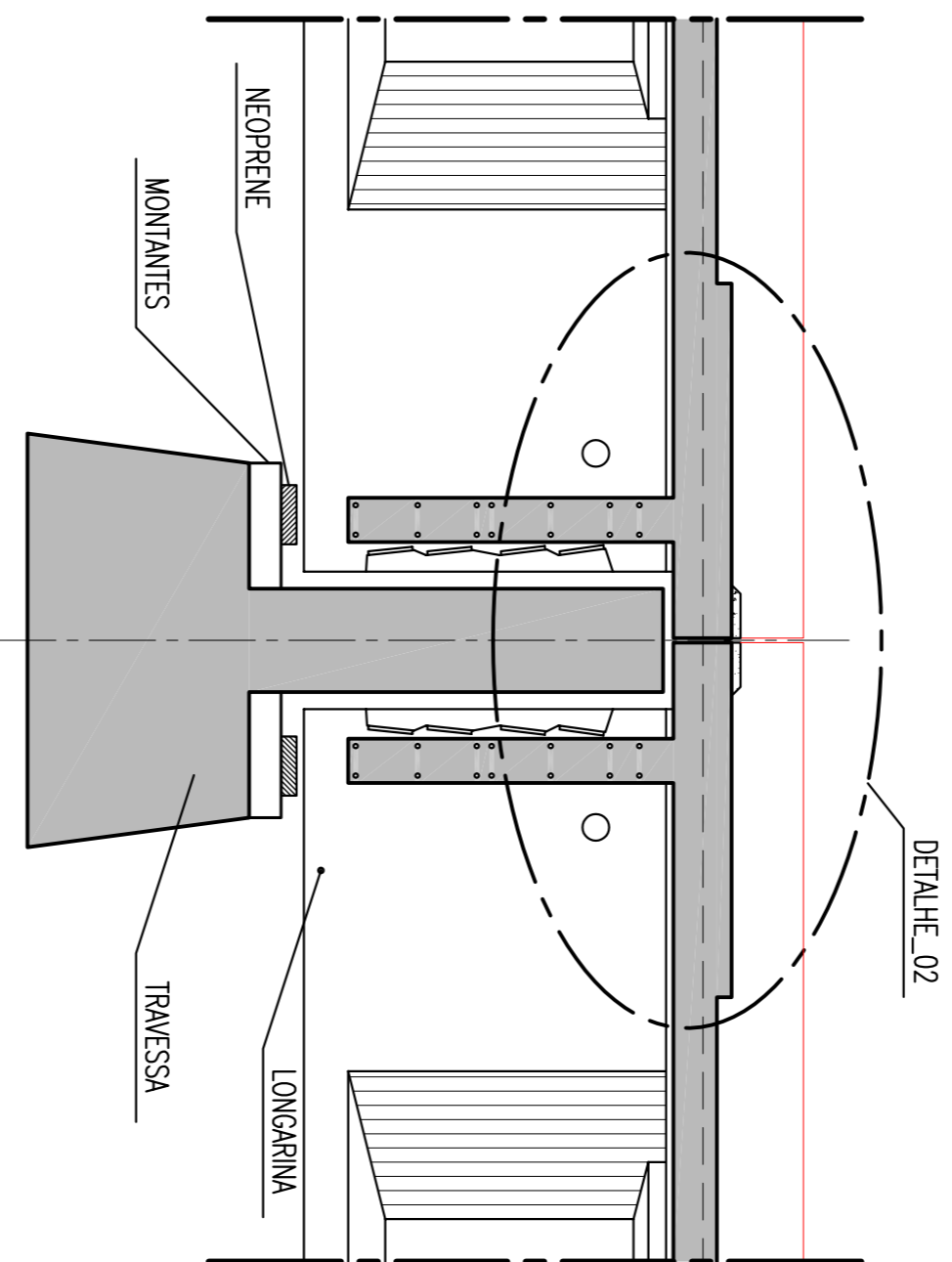
SEÇÃO TRANSVERSAL NO VÃO

ESCALA = 1:50



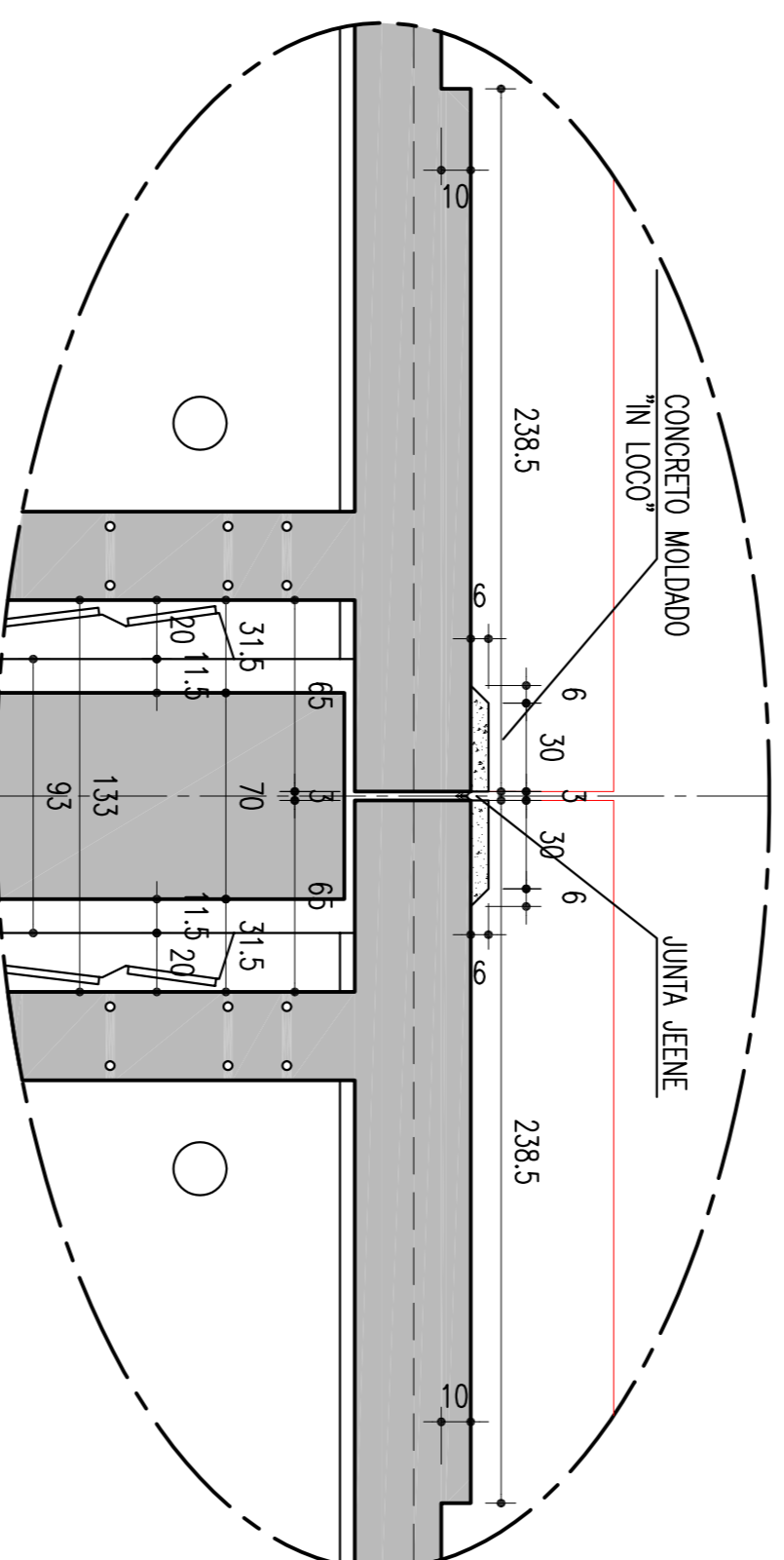
APOIOS COM JUNTA DE DILATAÇÃO (x6)

ESCALA = 1:50



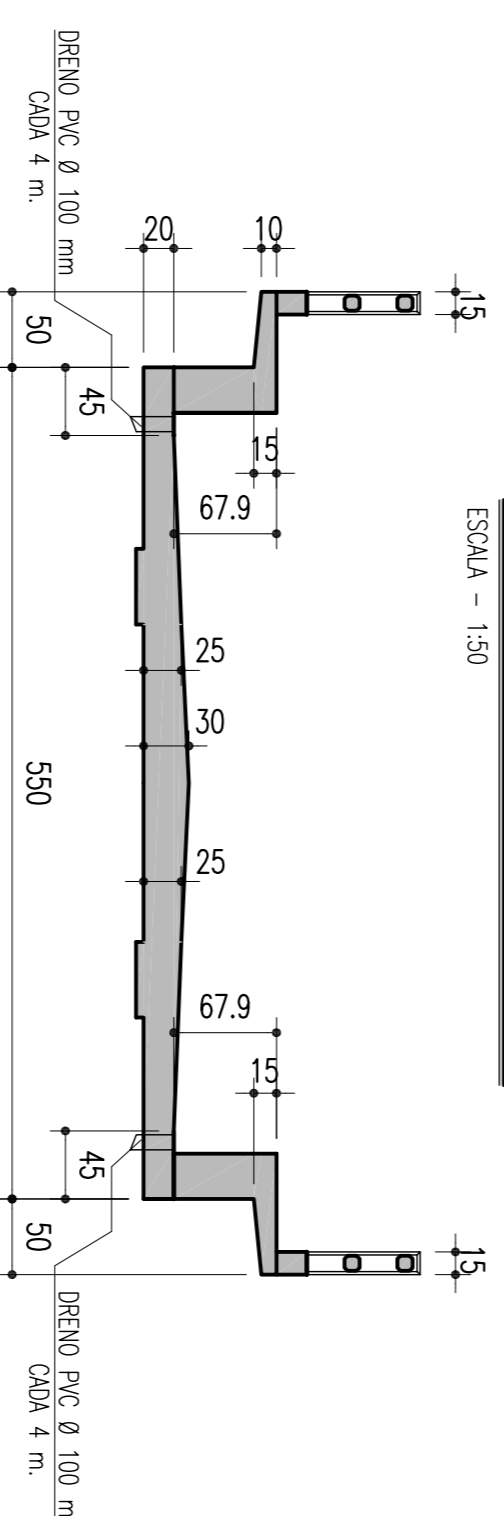
DETALHE\_02

ESCALA = 1:25



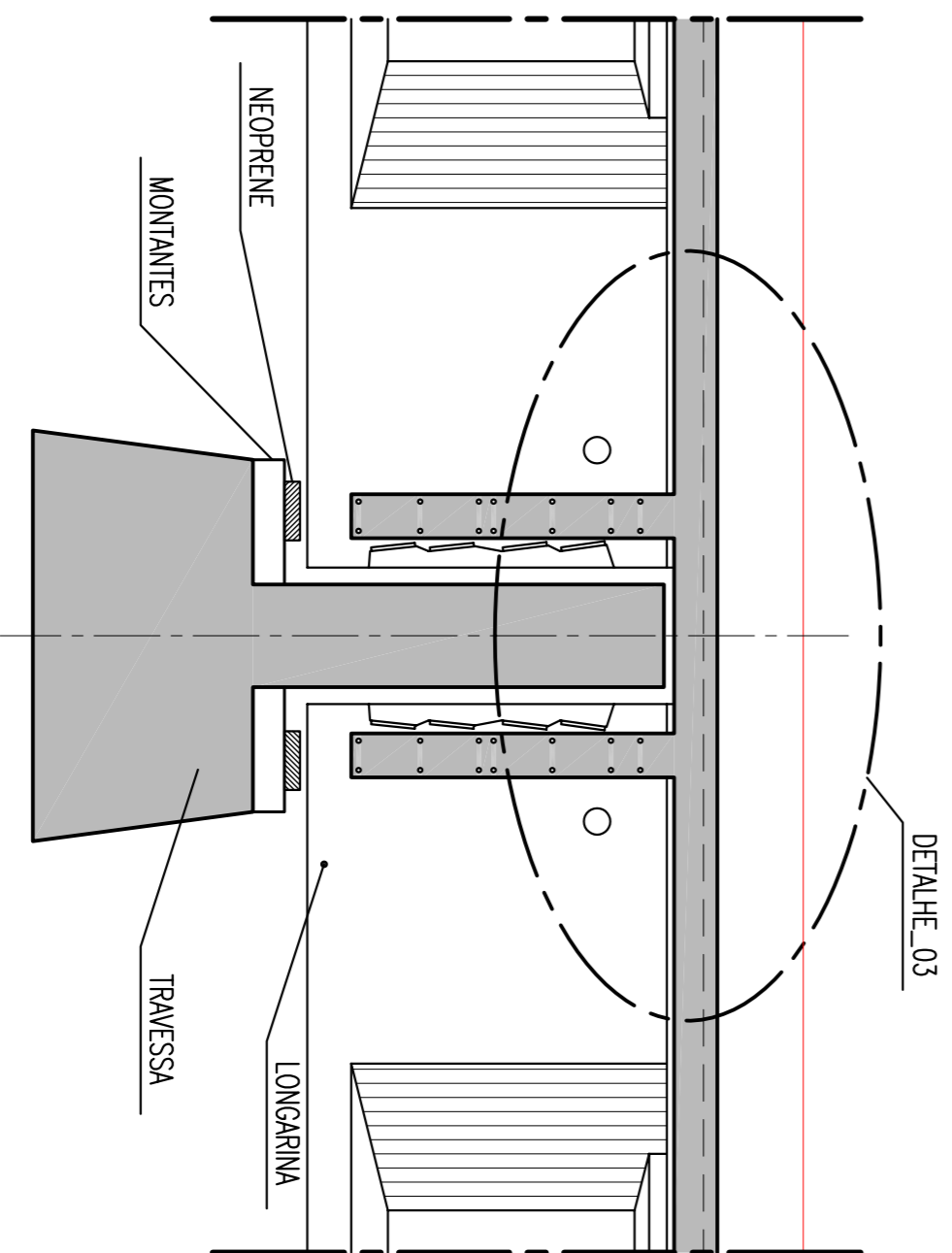
DETALHAMENTO LAJE SUPERIOR

ESCALA = 1:50



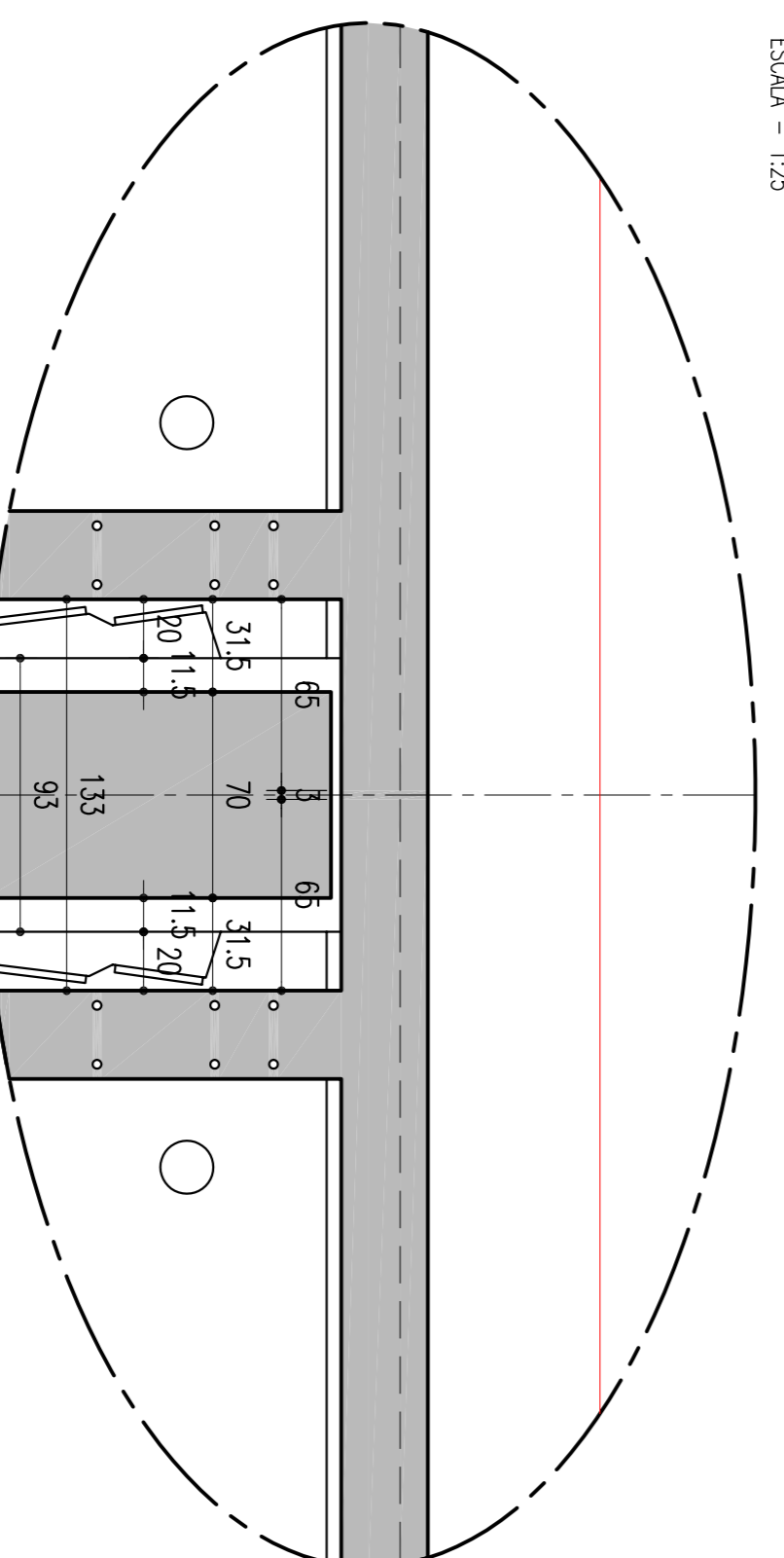
APOIOS SEM JUNTA DE DILATAÇÃO (x14)

ESCALA = 1:50



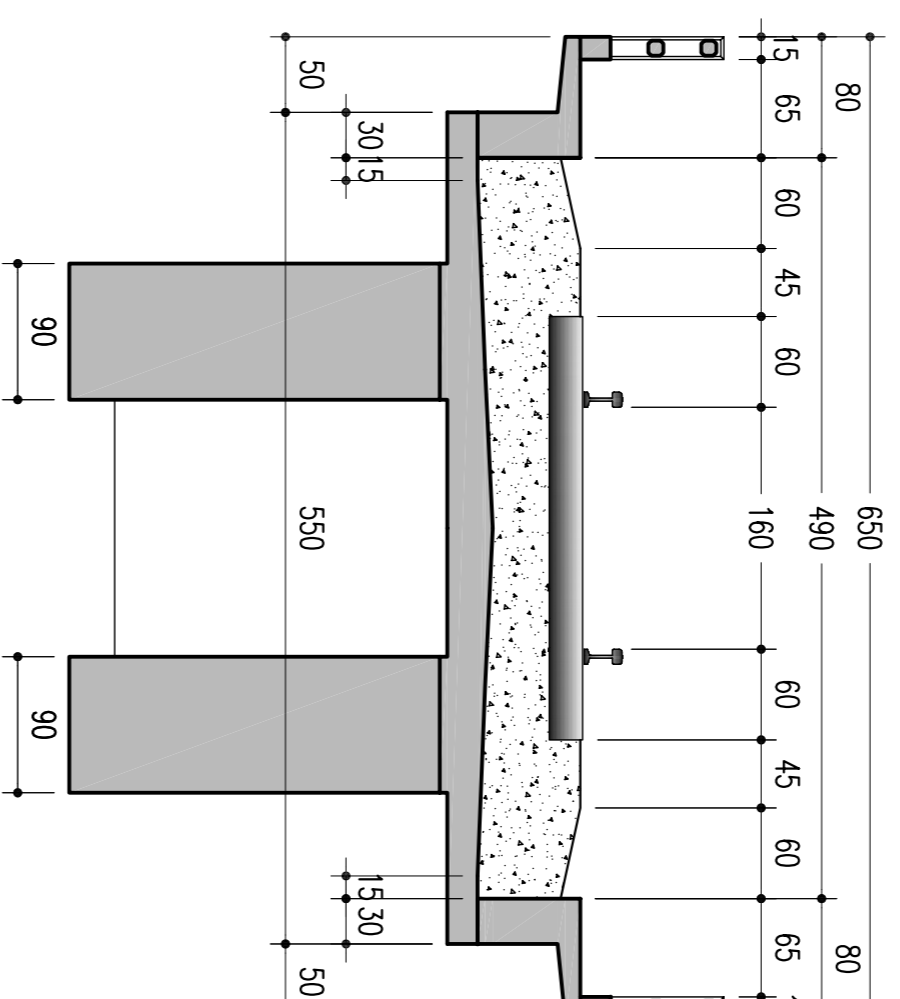
DETALHE\_03

ESCALA = 1:25



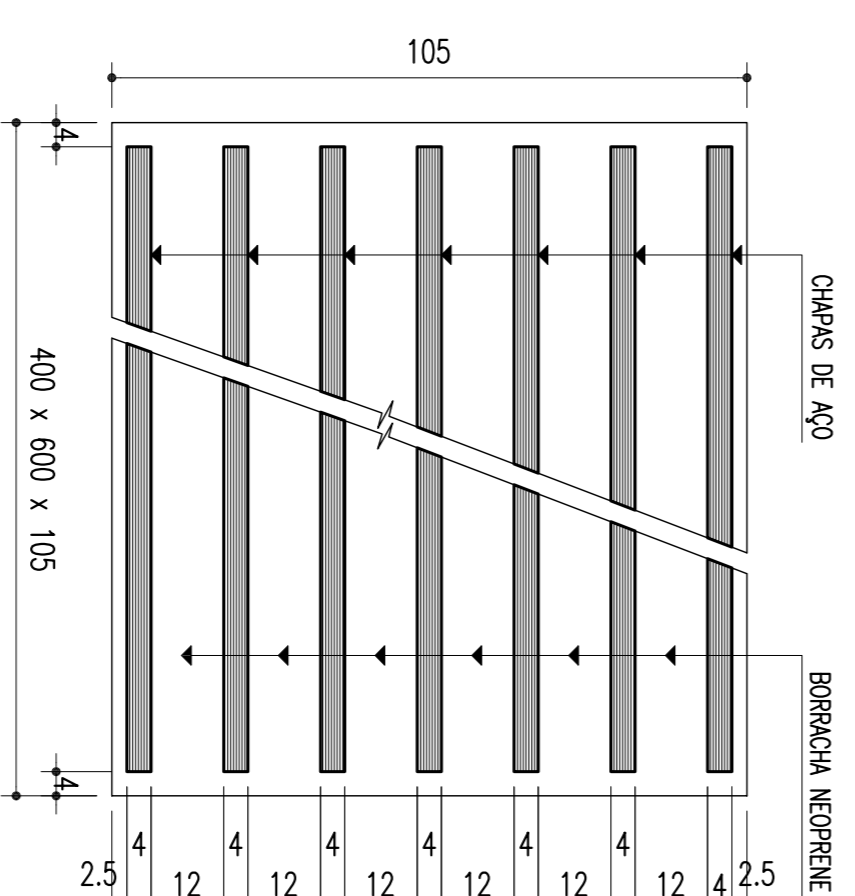
SEÇÃO TRANSVERSAL NOS APOIOS

ESCALA = 1:50



DETALHE: NEOPRENE 400x600x105

SEM ESCALA



NOTAS:

- 1 - Concretos:
Viga pré-moldada, fck = 35 MPa;
Laje superior, fck = 35 MPa;
Contrasteiro, transversinas fck = 25 MPa;
2 - Aços:
Armadura ativa, CP 190 RB 15,2;
Armadura passiva, CA 50;
3 - Neoprenes:
G=0,9 MPa;
Placas metálicas, inox, CF 24 fy >= 240 MPa;
4 - Peso da viga pré-moldada = 768 kN;

Table with columns for revision numbers (01, 02), description (REVISÃO GERAL, REVISÃO DO PROJETO EXECUTIVO), author (EMITENTE), checker (VERIFICAÇÃO), approver (APROVAÇÃO), code (CÓDIGO), and object (OBJETO). Includes company logo and name (COMPANHIA FERROVIÁRIA DO NORDESTE).