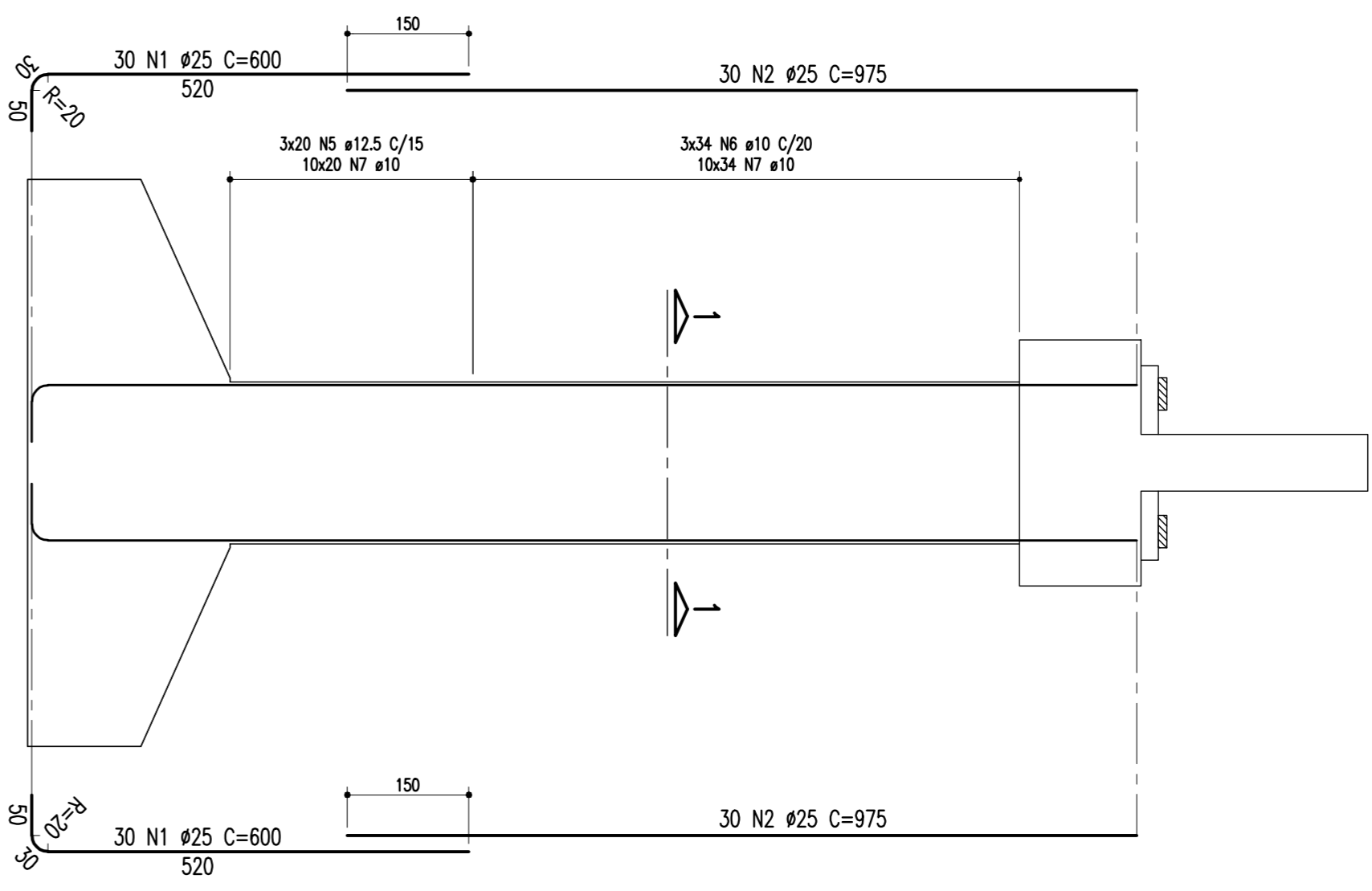
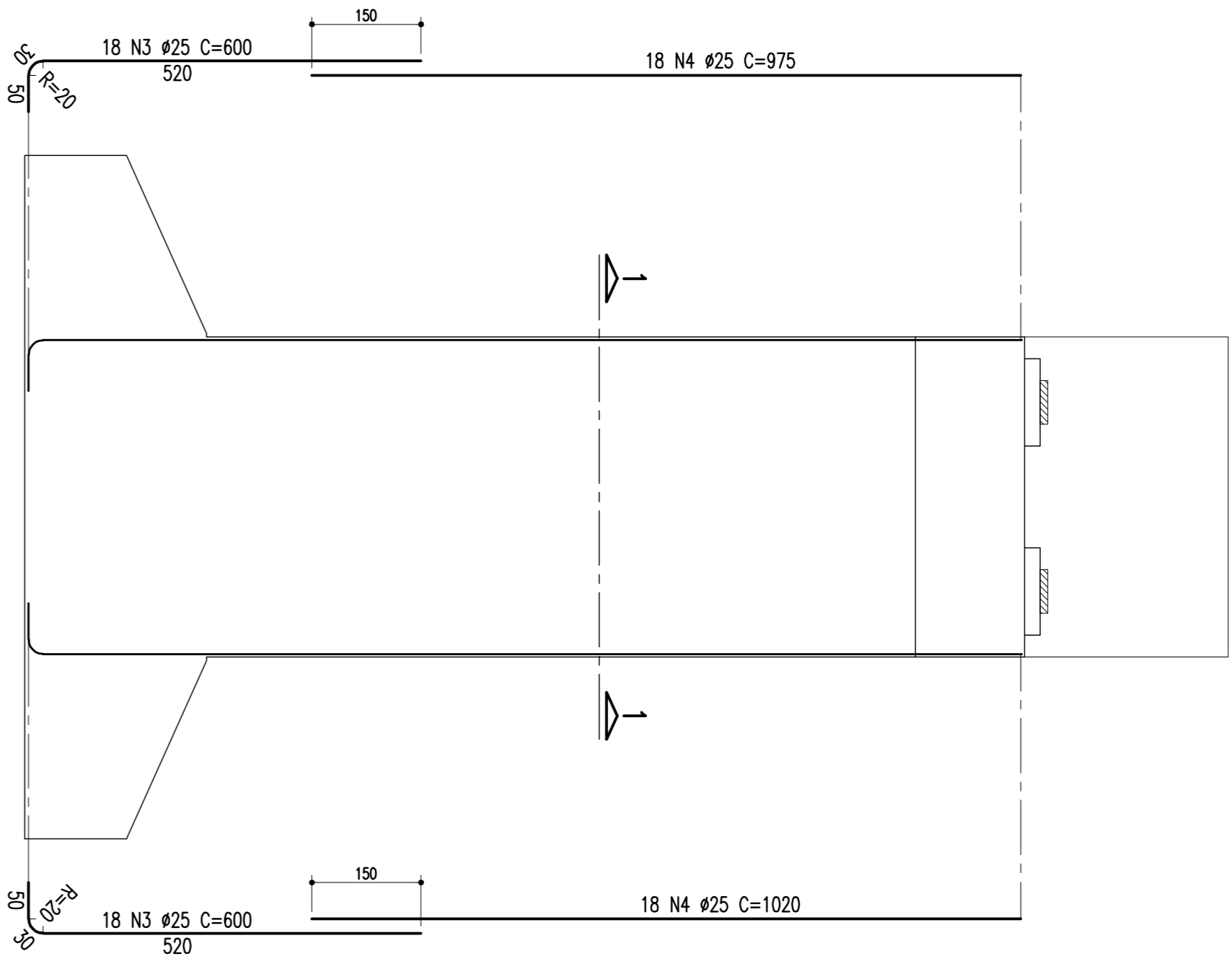


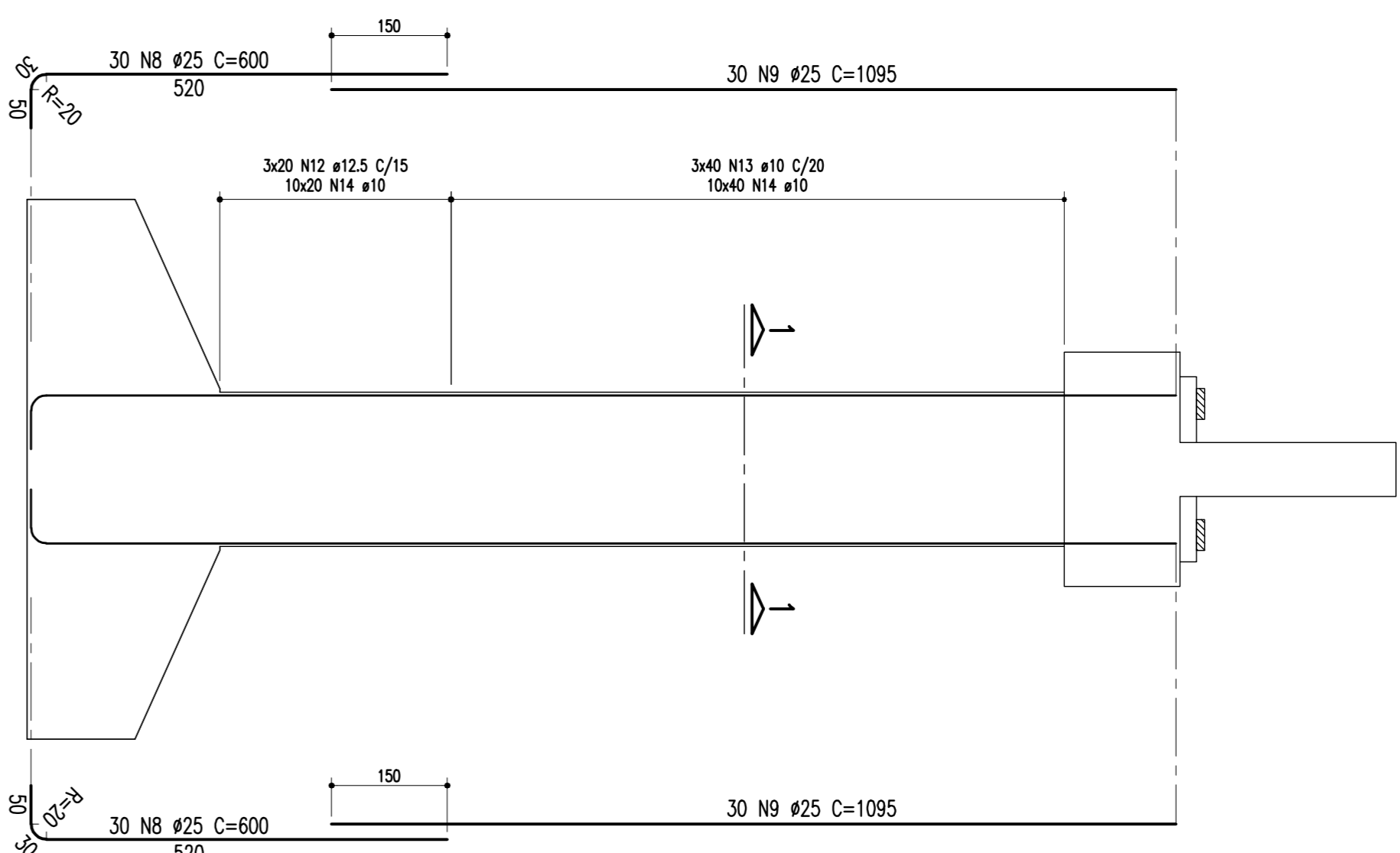
ARMADÃO DO PILAR (P20 = 11,25m)
ESCALA = 1/75
CORTE A-A



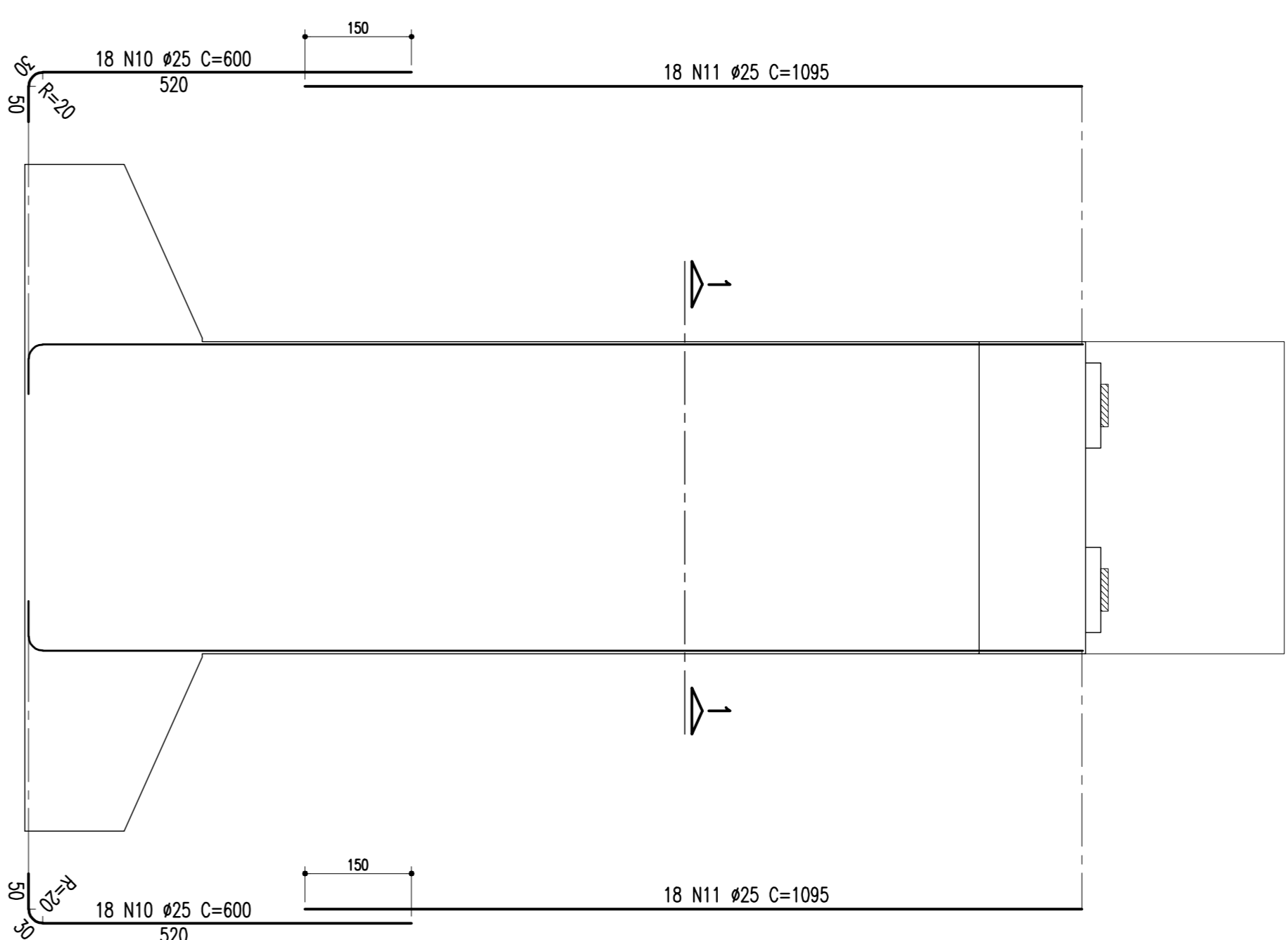
ARMADÃO DO PILAR (P20 = 11,25m)
ESCALA = 1/75
CORTE B-B



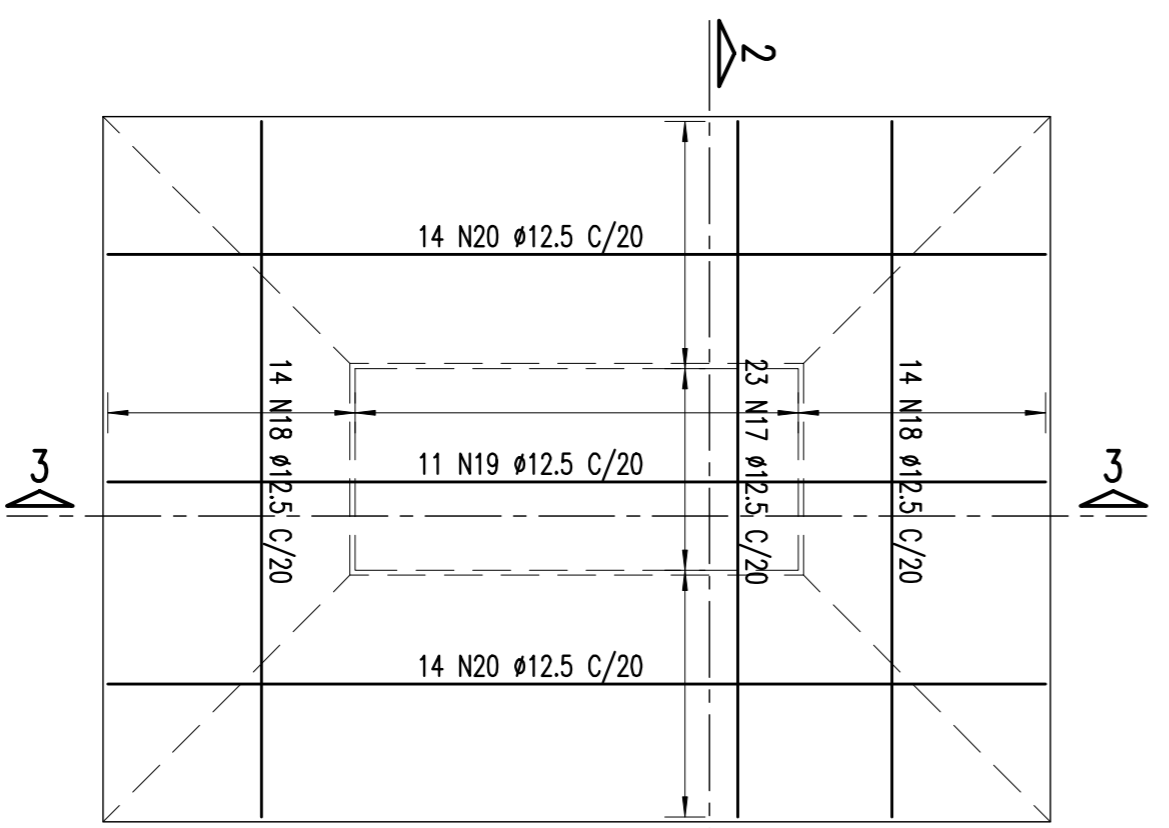
ARMADÃO DO PILAR (P19 = 12,45m)
ESCALA = 1/75
CORTE A-A



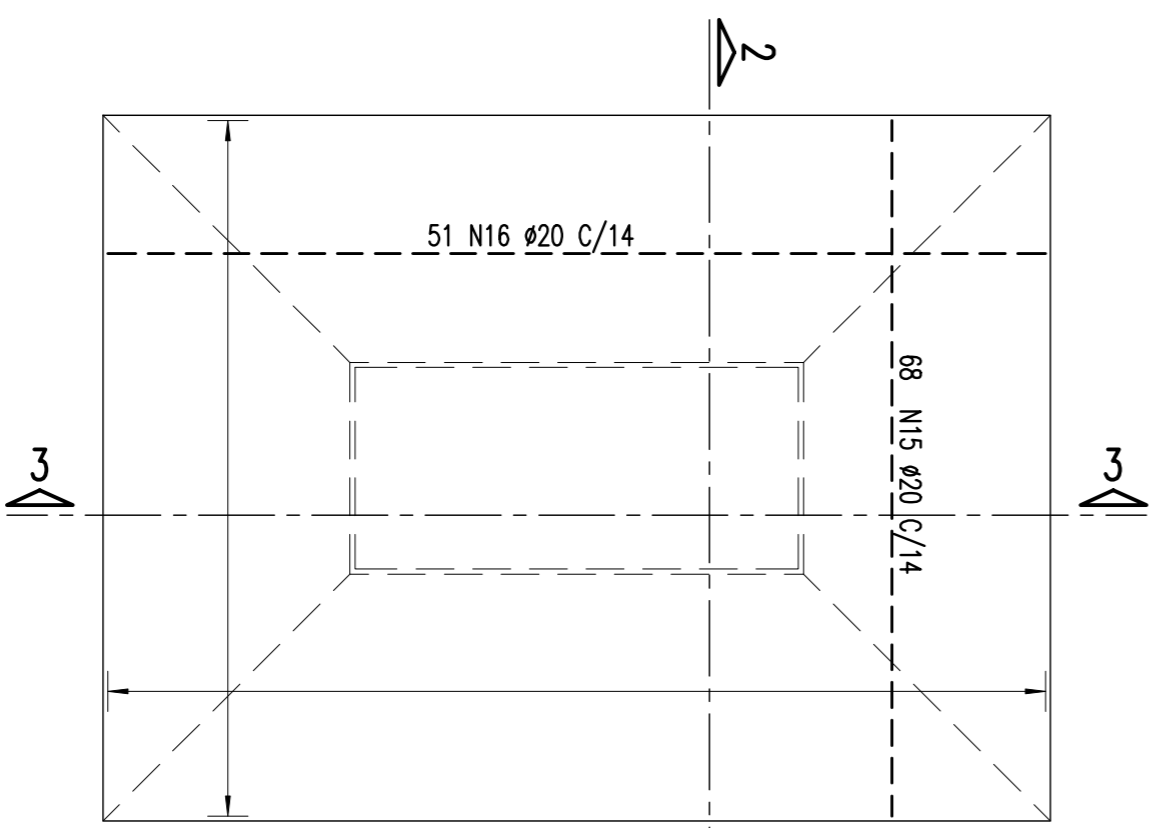
ARMADÃO DO PILAR (P19 = 12,45m)
ESCALA = 1/75
CORTE B-B



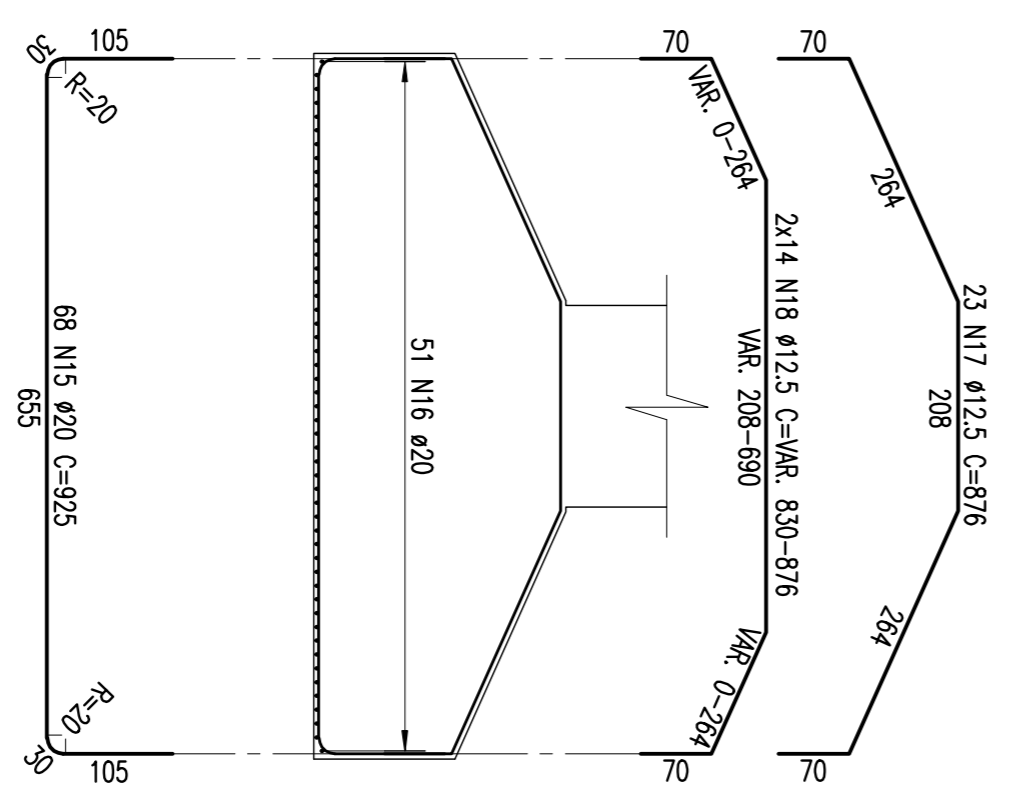
ARMADÃO DA SAPATA-700/940 (P01 E P20)
ESCALA = 1/75



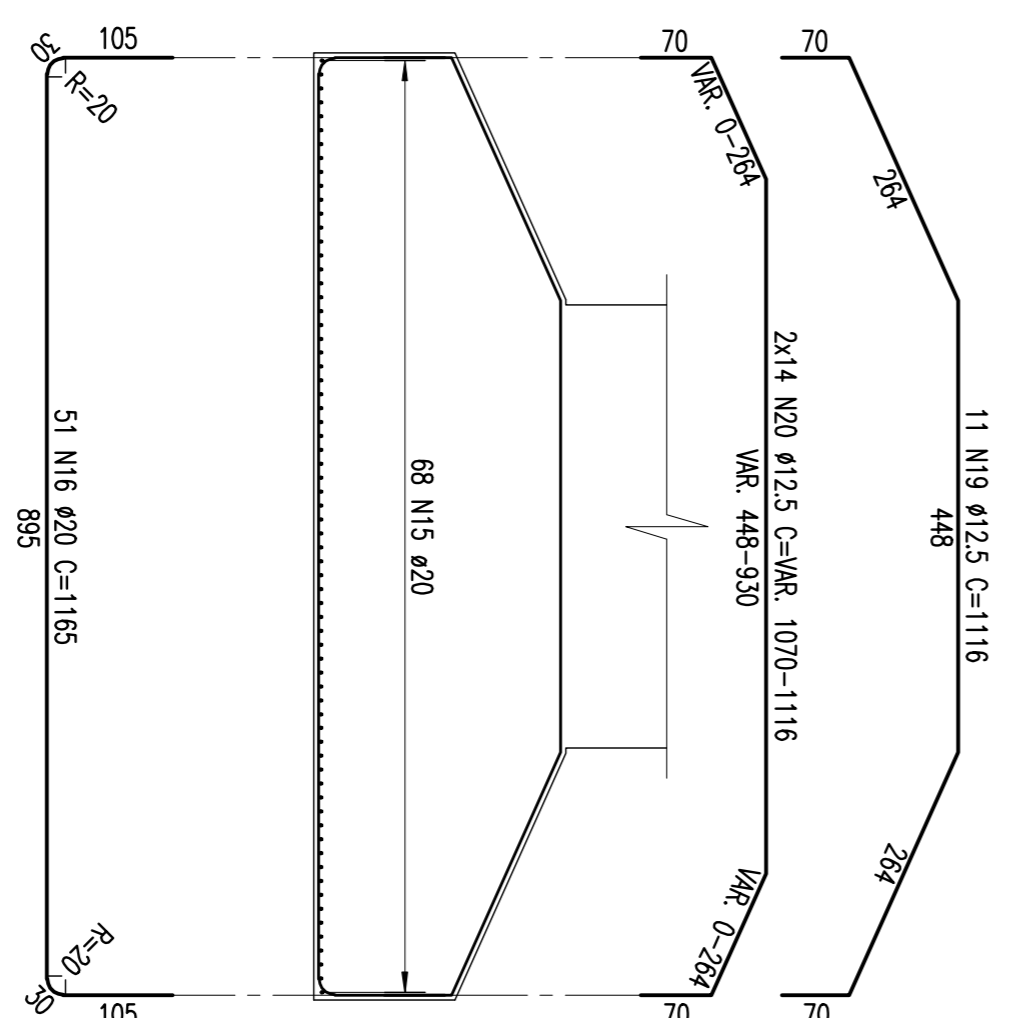
ARMADÃO DA SAPATA-700/940 (P01 E P20)
ESCALA = 1/75



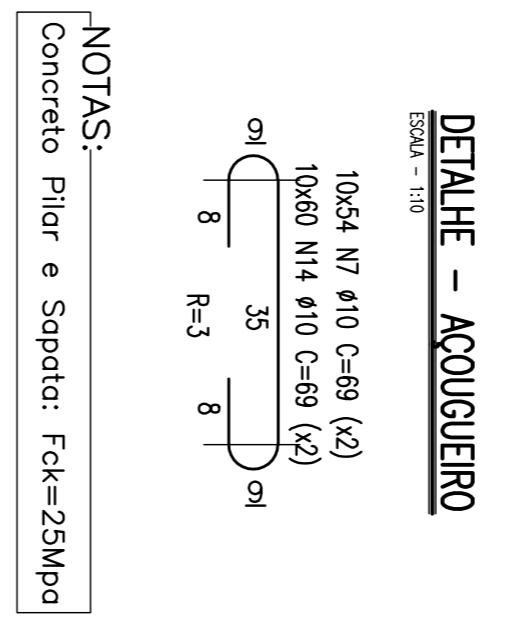
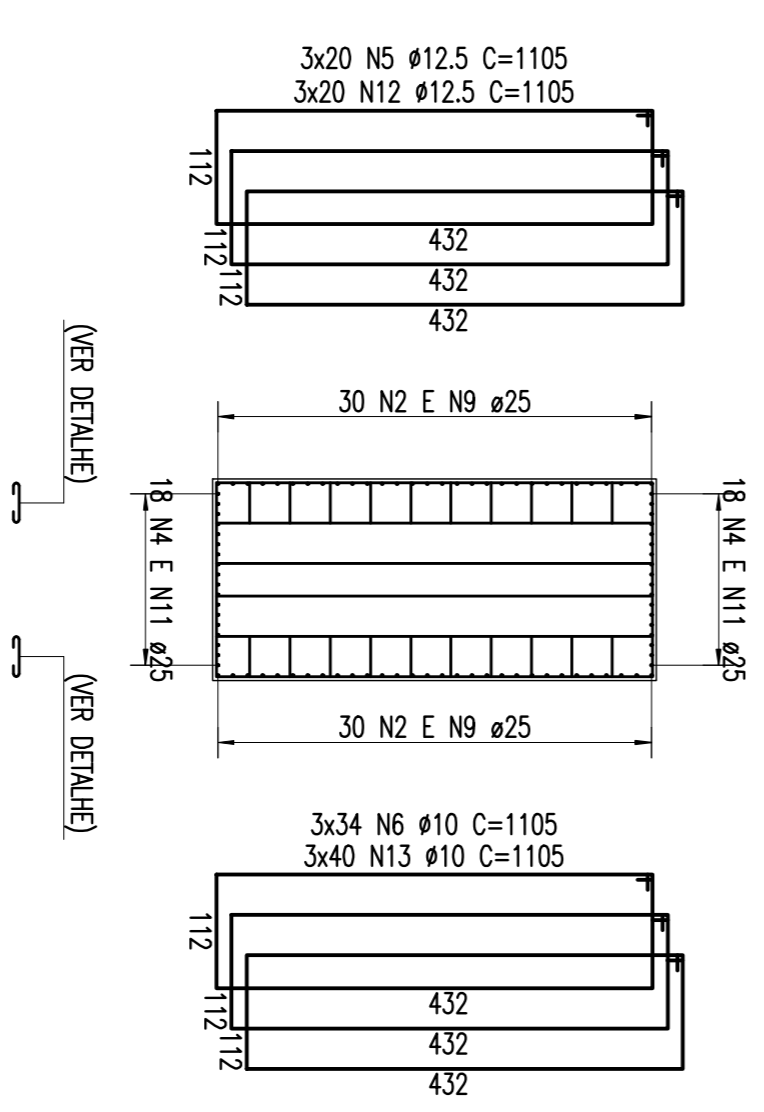
SEÇÃO 2-2
ESCALA = 1/75



SEÇÃO 3-3
ESCALA = 1/75



SEÇÃO 1-1
ESCALA = 1/75



TIPO	POS.	BIT.	QUANT.	CUM. (cm)	C.TOT. (cm)
ARM. PILAR P20 = 11,25m (1X)					
CA-50A	1	25	60	600	36000
CA-50A	2	25	60	975	59500
CA-50A	3	25	36	600	21600
CA-50A	4	25	36	975	35100
CA-50A	5	12,5	60	1105	66300
CA-50A	6	102	102	1105	112710
CA-50A	7	10	1080	69	74580
ARM. PILAR P19 = 12,45m (1X)					
CA-50A	8	25	60	600	36000
CA-50A	9	25	60	1095	63700
CA-50A	10	25	36	600	21600
CA-50A	11	25	36	1095	36420
CA-50A	12	12,5	60	1105	66300
CA-50A	13	120	1105	132800	132800
CA-50A	14	10	1200	69	82800
ARM. SAPATAS: P19 E P20 (2X)					
CA-50A	15	20	68	925	62900
CA-50A	16	51	1165	59415	59415
CA-50A	17	12,5	23	875	20148
CA-50A	18	12,5	28	-/M-	22884
CA-50A	19	12,5	11	1118	12276
CA-50A	20	28	-/M-	3084	3084
RESUMO DO AÇO					
(PARA SAPATAS/PILARES: P19 E P20)					
PESO CA-50A Ø 25	3139,20 m	12556,80 kg			
PESO CA-50A Ø 20	2446,30 m	6115,75 kg			
PESO CA-50A Ø 12,5	3064,24 m	3064,24 kg			
PESO CA-50A Ø 10	4026,30 m	2536,57 kg			
PESO SUB-TOTAL CA-50A		24273,36 kg			
PESO TOTAL (PARA SAPATAS/PILARES) = 24273,36 kg					

REVISÃO DO PROJETO EXECUTIVO	EMITENTE	VERIFICAÇÃO	APROVAÇÃO	CÓDIGO	DOCUMENTOS DE REFERENCIA	OBJETO
02	REVISÃO DO PROJETO EXECUTIVO					
01	REVISÃO GERAL					
	DISCRIMINAÇÃO					
	REVISÕES					

CONVENÇÕES	SIGNA
CONCRETO	
ARMADÃO	

COMPANHIA FERROVIÁRIA DO NORDESTE	PROJETO EXECUTIVO
FERROVIA NOVA TRANSNORDESTINA	LOTE 07 - OBRA 01
ELISEU MARTINS/PI - TRINDADE/P/E	
ARMADÃO - SAPATAS E PILARES: P19 E P20	