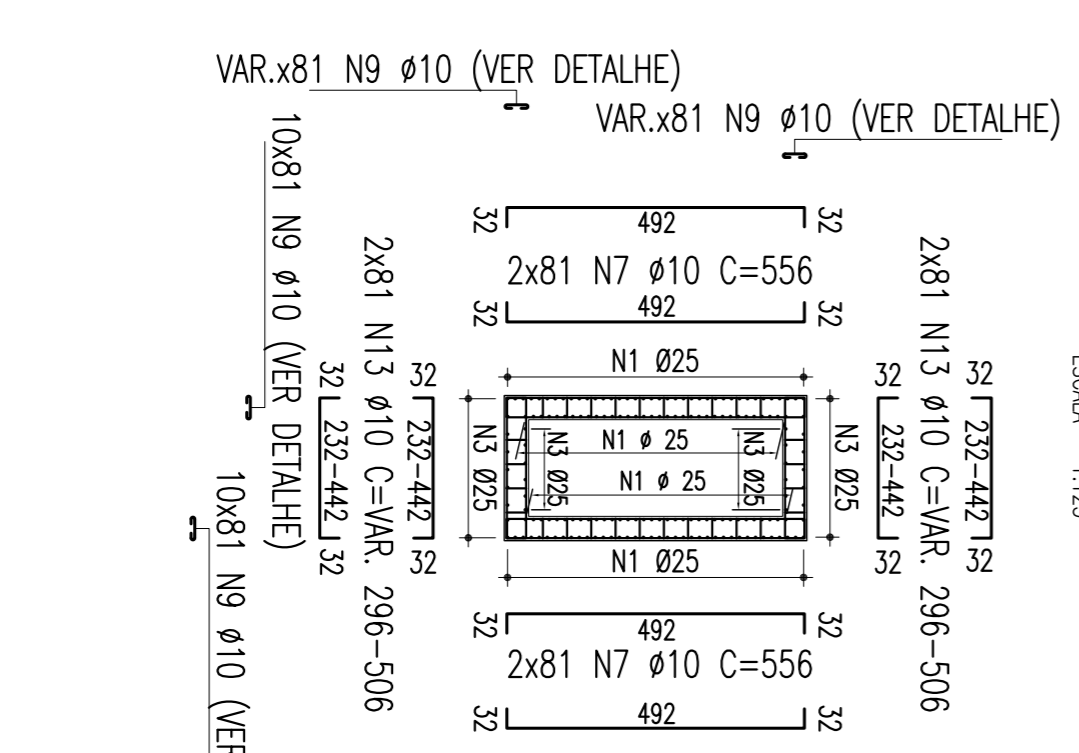
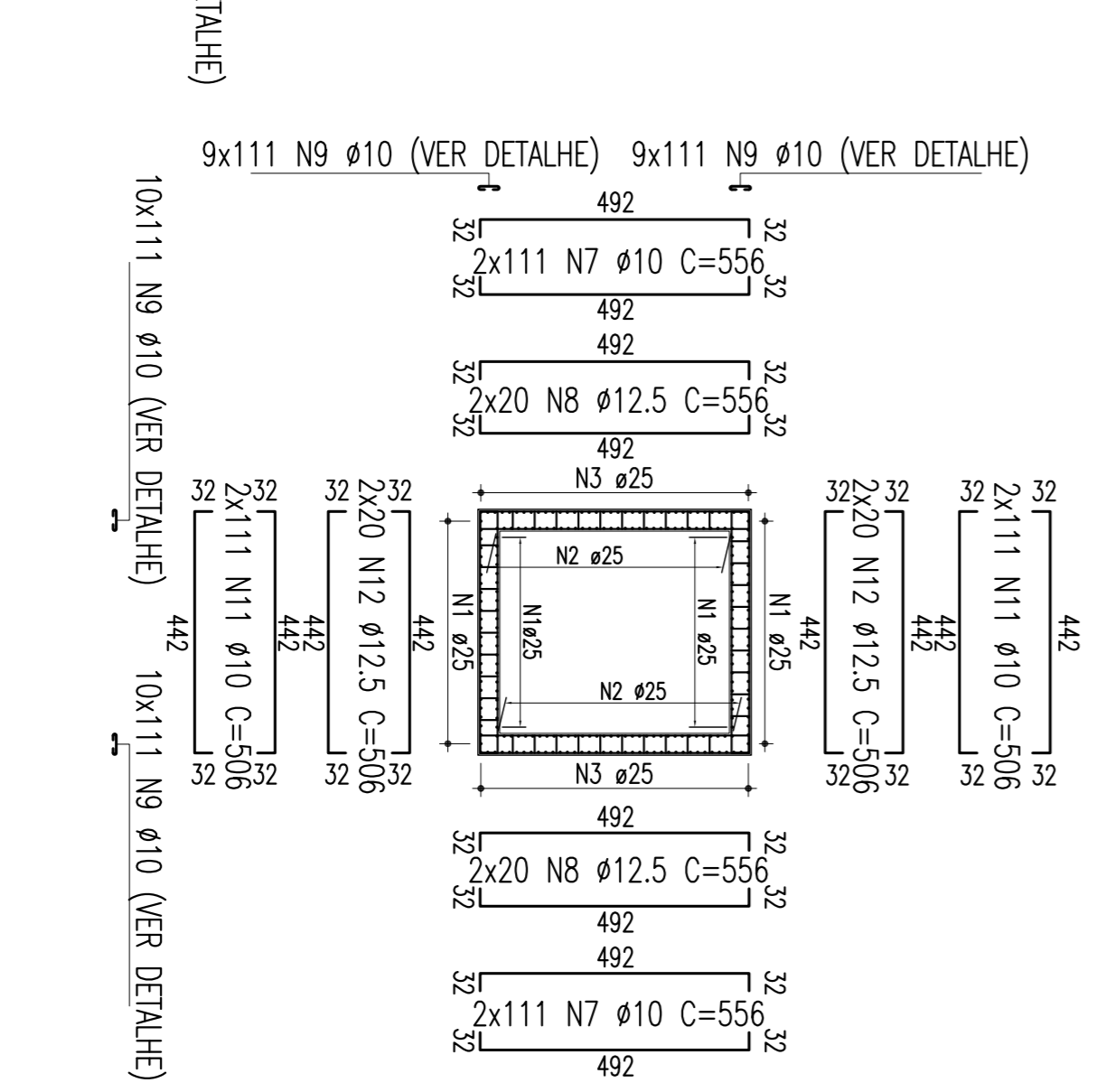


TABELA DE FERROS				
TIPO	POS.	BIT.	QUANT.	CARG.
			(cm)	(cm)
ARM. PILAR P09 = 30,00m(1 X)				
CA-50A	1	25	236	247800
CA-50A	2	25	68	53380
CA-50A	3	25	122	146400
CA-50A	4	25	240	192000
CA-50A	5	25	128	96640
CA-50A	6	25	112	77800
CA-50A	7	10	728	404768
CA-50A	8	12,5	80	44480
CA-50A	9	10	6248	381128
CA-50A	10	25	4	870
CA-50A	11	10	436	506
CA-50A	12	10	80	40480
CA-50A	13	12,5	80	40480
CA-50A	14	10	324	129924
ARM. SAPATA P09 (1 X)				
CA-50A	14	16	24	18888
CA-50A	15	16	32	24688
CA-50A	16	16	32	24688
CA-50A	17	16	32	24688
CA-50A	18	16	24	18888
CA-50A	19	25	54	43200
CA-50A	20	25	54	43200
CA-50A	21	16	21	16928
CA-50A	22	16	21	16928
CA-50A	23	16	26	20568
CA-50A	24	16	26	20568
CA-50A	25	16	42	32240
CA-50A	26	16	71	55728
CA-50A	27	25	71	49795
ARM. LAJE DE CONTRAFORNECIMENTO: L1 (1 X)				
CA-50A	28	12,5	40	17400
CA-50A	29	12,5	28	15960
RESUMO DO AÇO (SAPATA/PILAR)				
PESO CA-50A Ø 25	9980,30 m	38457,69Kg		
PESO CA-50A Ø 16	1956,96 m	3072,43Kg		
PESO CA-50A Ø 12,5	2422,80 m	2377,37Kg		
PESO CA-50A Ø 10	11364,36 m	7136,82Kg		
PESO SUB-TOTAL CA-50A		51044,31Kg		
PESO TOTAL (SAPATA/PILAR) = 51044,31Kg				

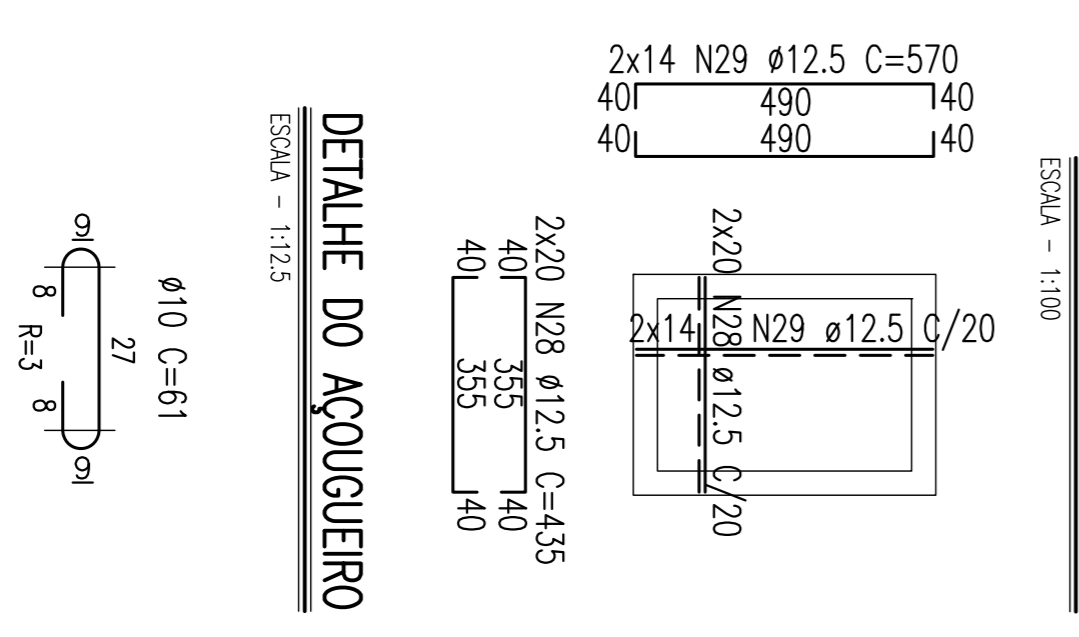
SEÇÃO 1-1  
ESCALA = 1:125



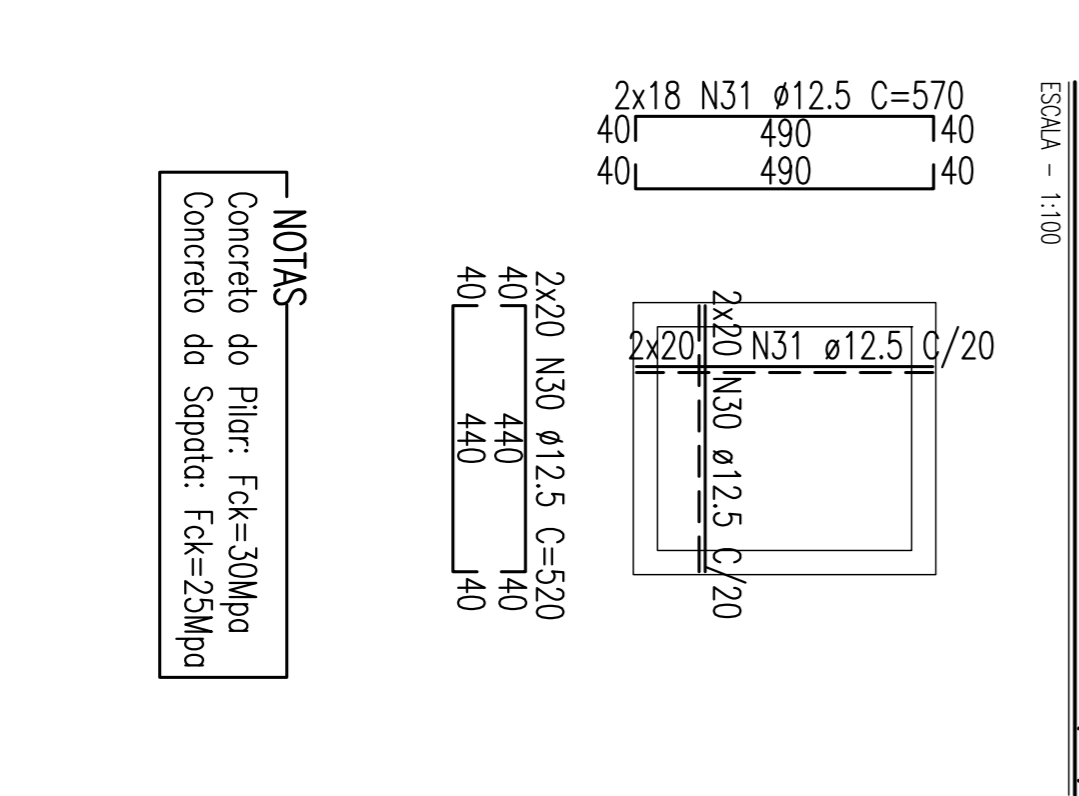
SEÇÃO 2-2  
ESCALA = 1:125



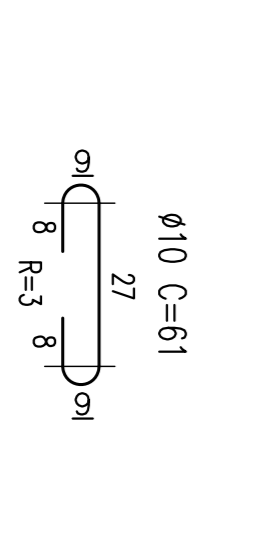
ARMAÇÃO: LAJE DE CONTRAFORNECIMENTO L1  
ESCALA = 1:100



ARMAÇÃO: LAJE DE CONTRAFORNECIMENTO L2=L3=L4 (3X)  
ESCALA = 1:100



DETALHE DO AÇUGUEIRO  
ESCALA = 1:125



NOTAS  
Concreto do Pilar: Fck=30Mpa  
Concreto do Sapata: Fck=25Mpa

