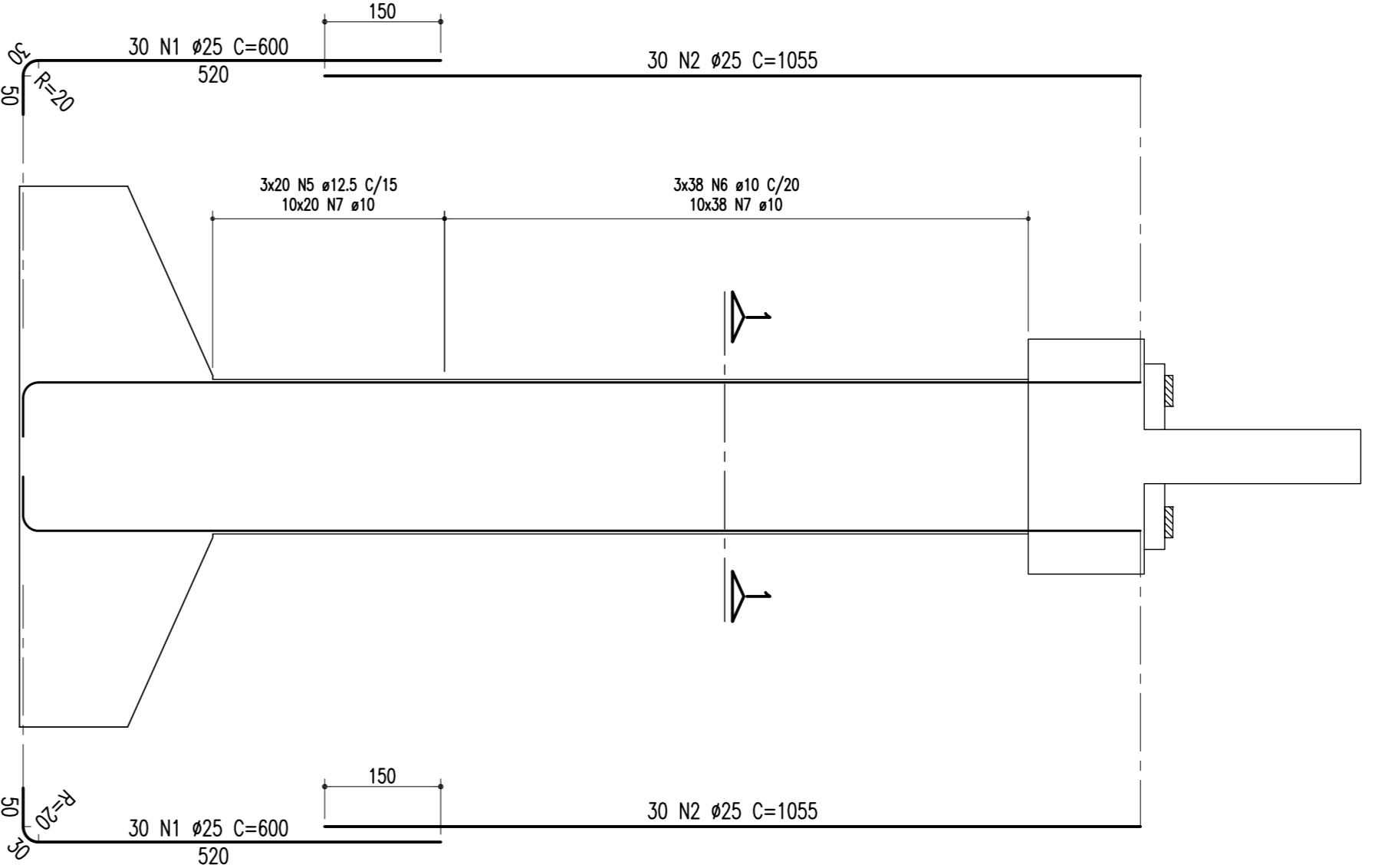


ARMADÃO DOS PILARES (P03, P04, P05 E P06 = 12,00m)

CORTE A-A

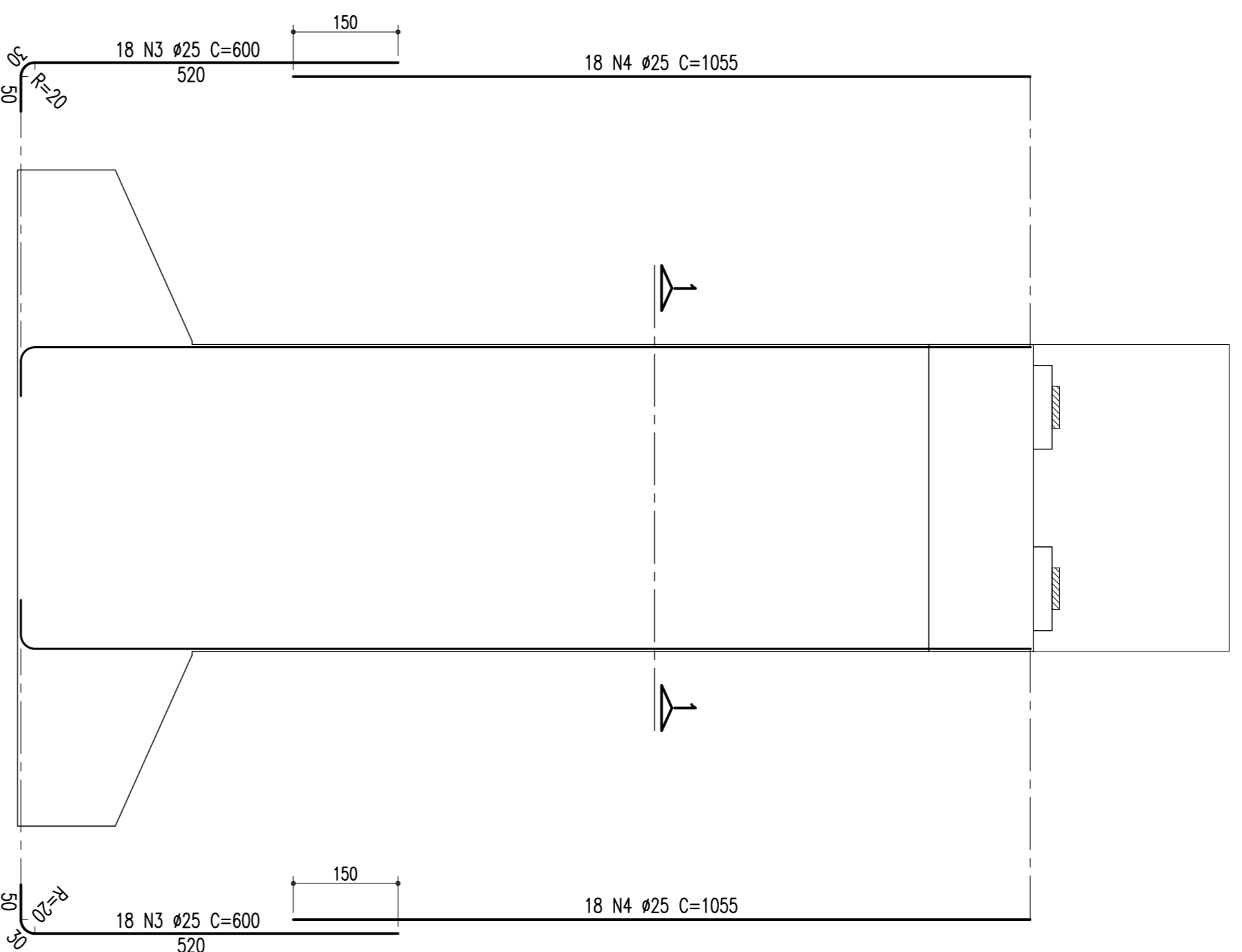
ESCALA = 1/75



ARMADÃO DOS PILARES (P03, P04, P05 E P06 = 12,00m)

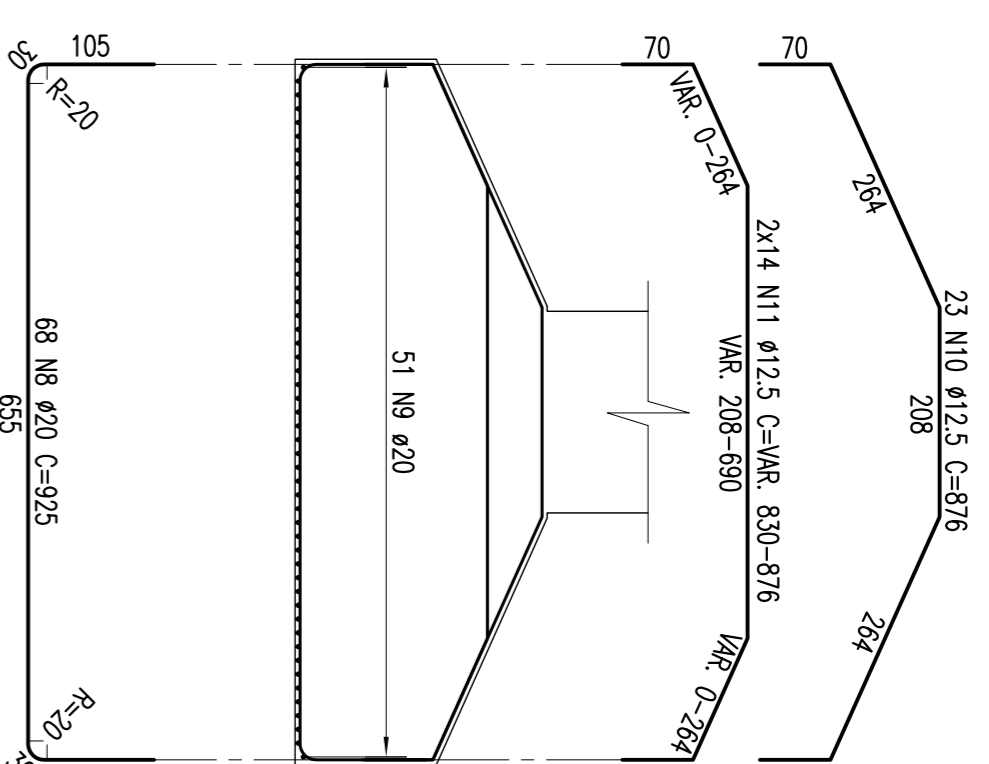
CORTE B-B

ESCALA = 1/75



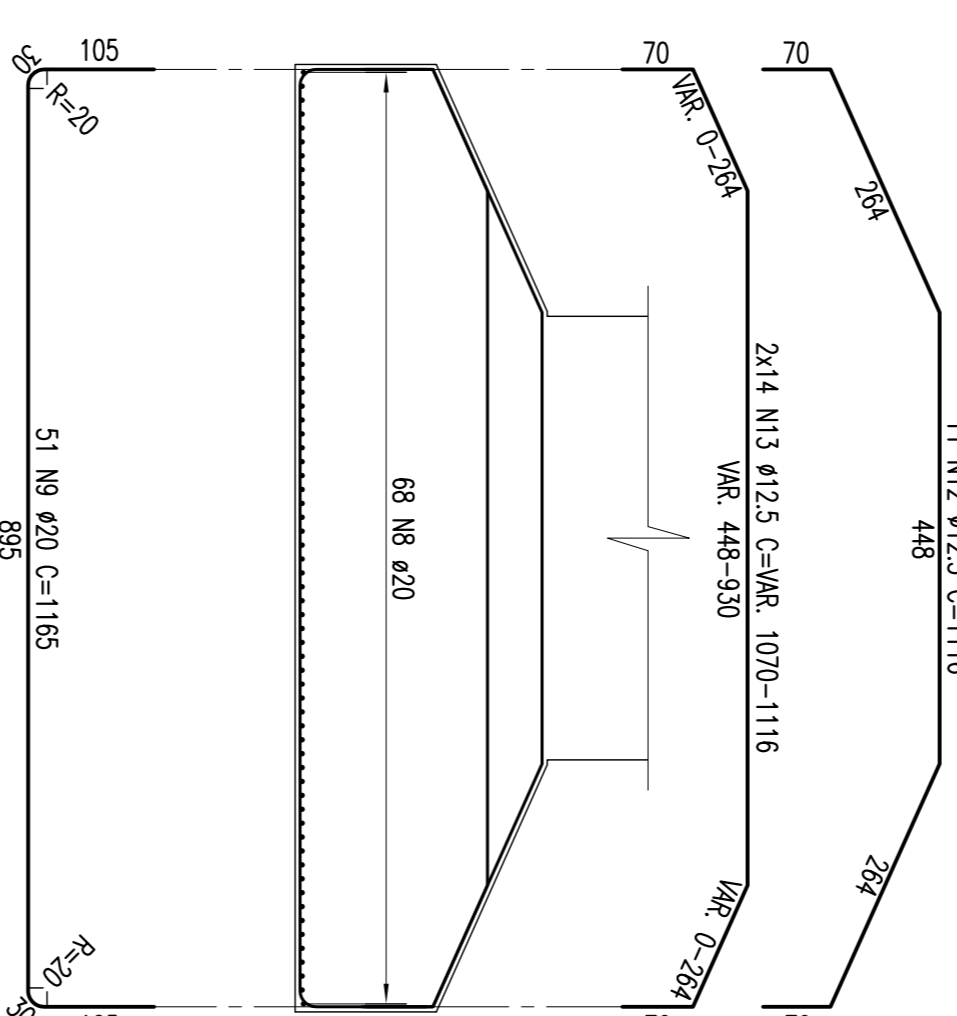
SEÇÃO 2-2

ESCALA = 1/75



SEÇÃO 3-3

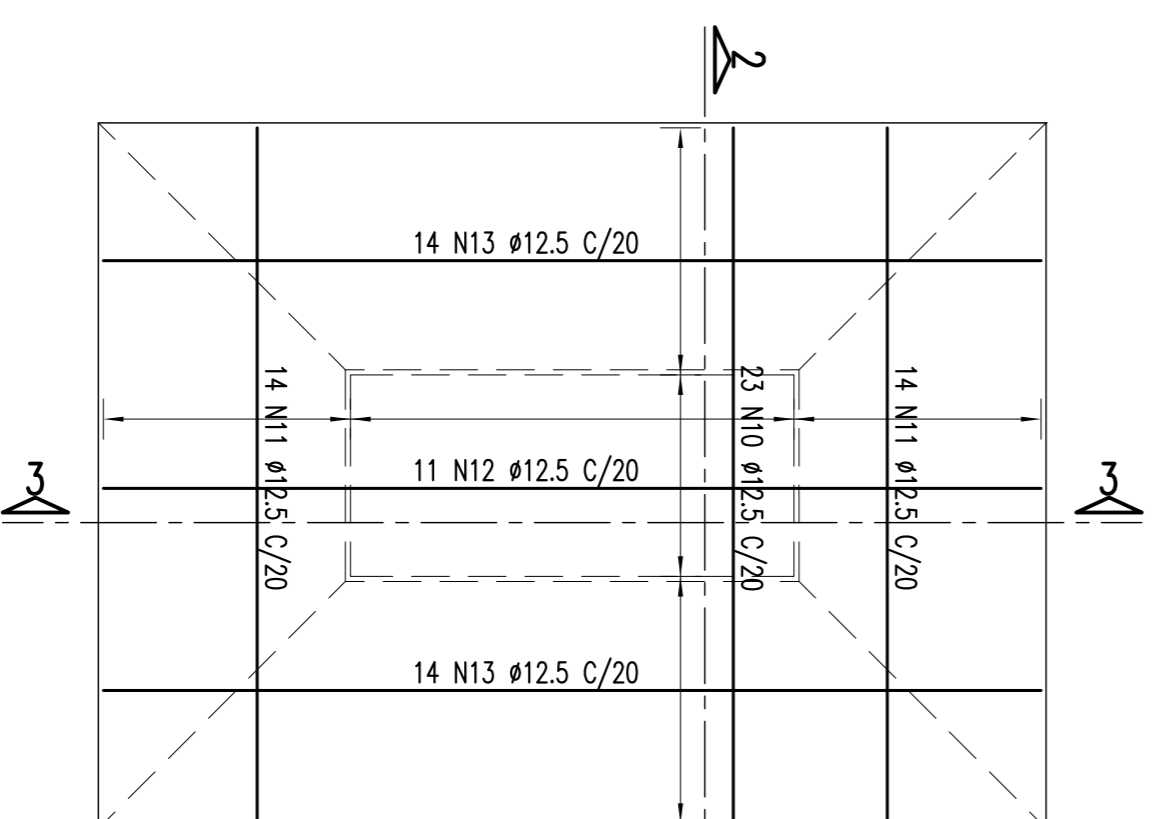
ESCALA = 1/75



ARMADÃO DAS SAPATAS 700/940 - P03, P04, P05 E P06

ESCALA = 1/75

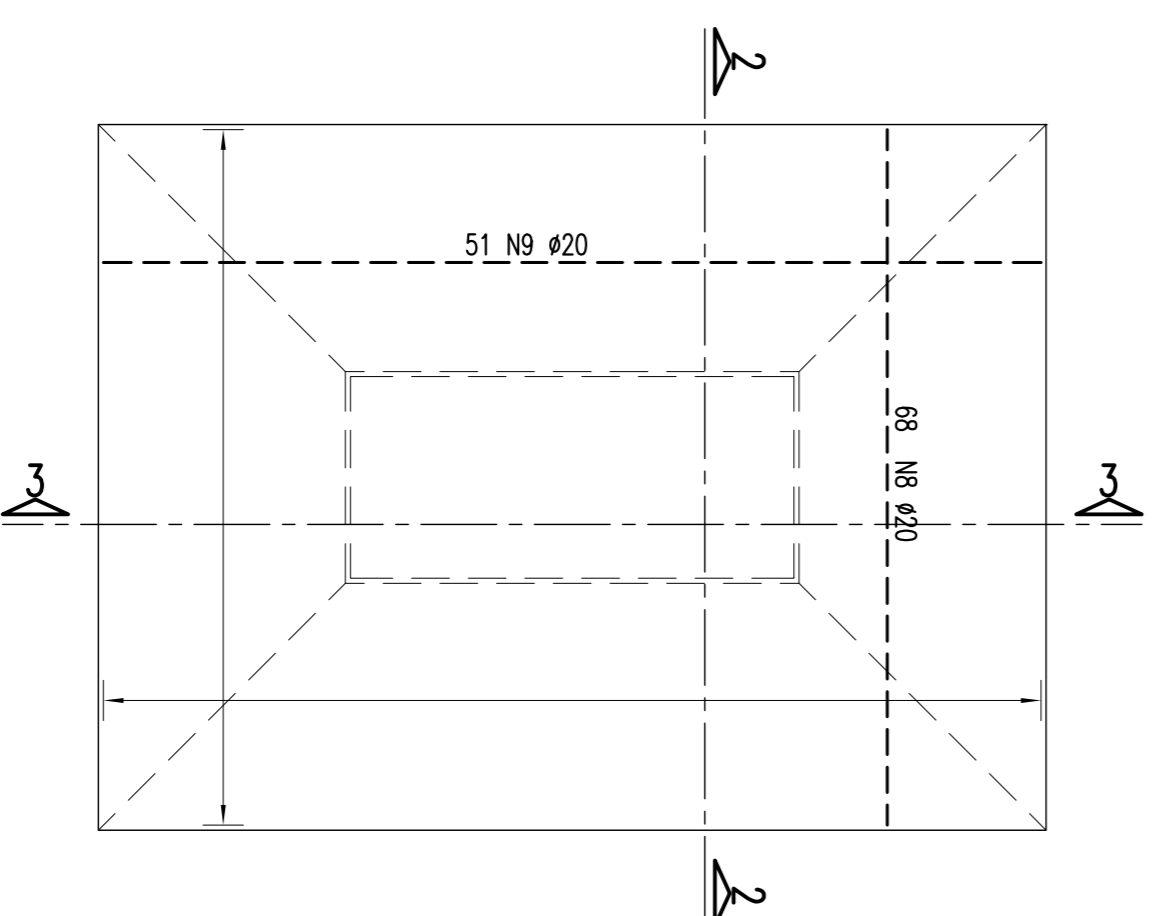
(FERRAGEM SUPERIOR)



ARMADÃO DAS SAPATAS 700/940 - P03, P04, P05 E P06

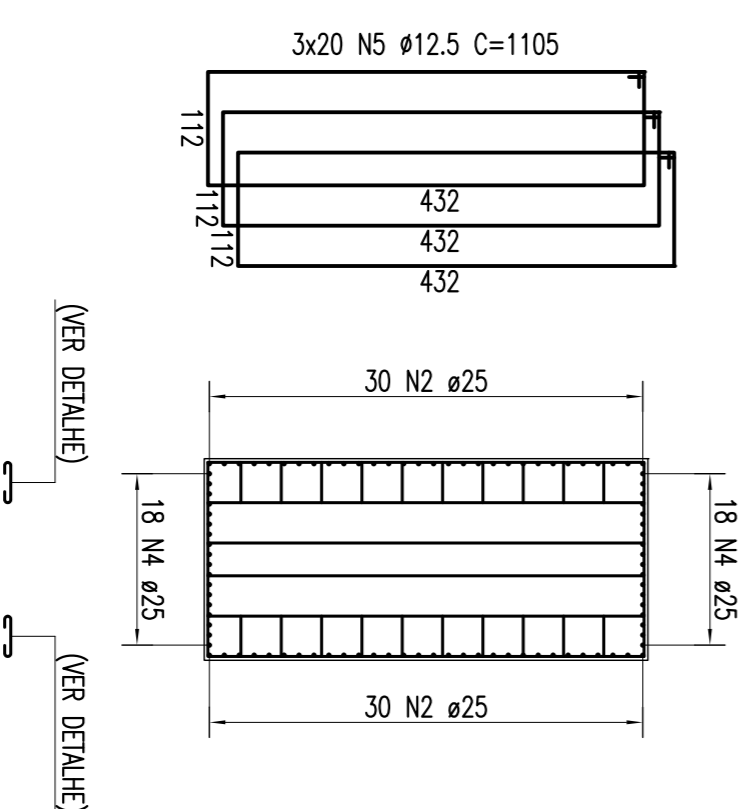
ESCALA = 1/75

(FERRAGEM INFERIOR)



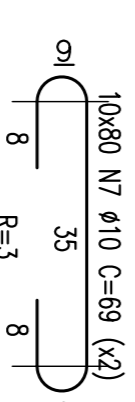
SEÇÃO 1-1

ESCALA = 1/75



DETALHE DO ACOUGUEIRO

ESCALA = 1/10



NOTAS:
Concreto Pilar e Sapatã: Fck=25Mpa

TABELA DE FERROS					
TIPO	POS.	BIT.	QUANT.	C.UNC. (cm)	C.TOT. (cm)
ARM. PILAR P03, P04, P05 E P06 = 12,00m (4 X)					
CA-50A	1	25	60	600	36000
CA-50A	2	25	60	1055	63300
CA-50A	3	25	36	600	21600
CA-50A	4	25	36	1055	37980
CA-50A	5	12.5	60	1105	66300
CA-50A	6	10	114	1105	125970
CA-50A	7	10	1160	69	80040
ARM. SAPATAS: P03, P04, P05 E P06 (4 X)					
CA-50A	8	20	68	925	62900
CA-50A	9	20	51	1165	59415
CA-50A	10	12.5	23	876	20148
CA-50A	11	12.5	28	-VAR-	23884
CA-50A	12	12.5	11	1116	12276
CA-50A	13	12.5	28	-VAR-	30604
RESUMO DO ACO					
(PARA SAPATAS/PILARES P03, P04, P05 E P06)					
PESO CA-50A Ø 25			6355,20 m	25420,800Kg	
PESO CA-50A Ø 20			4892,60 m	12231,500Kg	
PESO CA-50A Ø 12.5			6128,48 m	6128,480Kg	
PESO CA-50A Ø 10			8240,40 m	5191,450Kg	
PESO SUB-TOTAL CA-50A				48972,230Kg	
PESO TOTAL					
(PARA SAPATAS/PILARES) = 48972,230Kg					

Nº	REVISÃO DO PROJETO EXECUTIVO	EMITENTE	VERIFICAÇÃO	APROVAÇÃO	CÓDIGO	DOCUMENTOS DE REFERENCIA	OBJETO	VERIF. RESP. TEC.	SIGNA	CONVENÇÕES	APROVAÇÃO	OBJETO	ESCALAS	INDICADA	REVISÃO
02	REVISÃO DO PROJETO EXECUTIVO														02
01	REVISÃO GERAL														
	DESCRIMINAÇÃO														