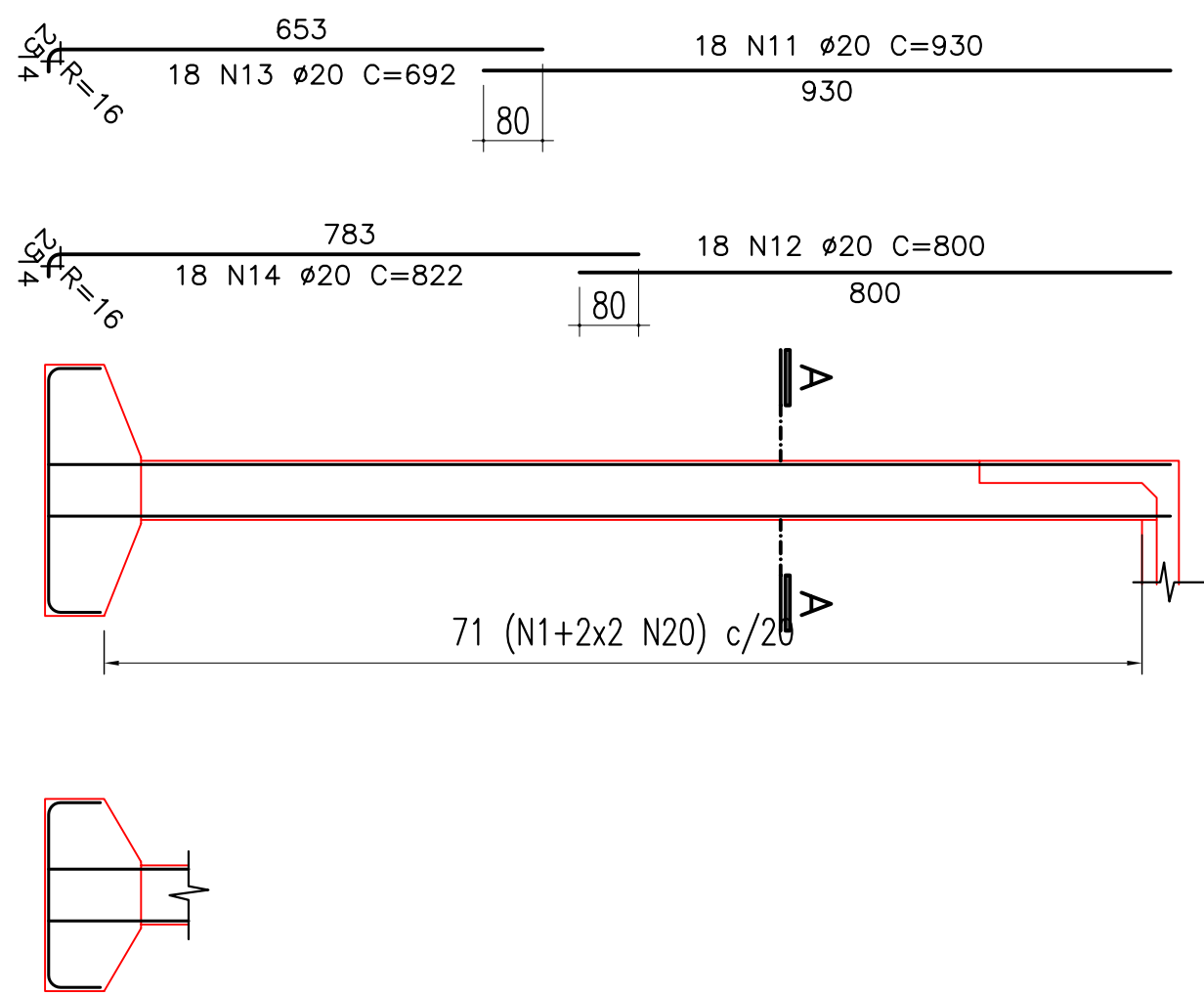


ENCONTRO 01

# ARMAÇÃO DOS PILARES PA E PB

ELEVACÃO (2x)

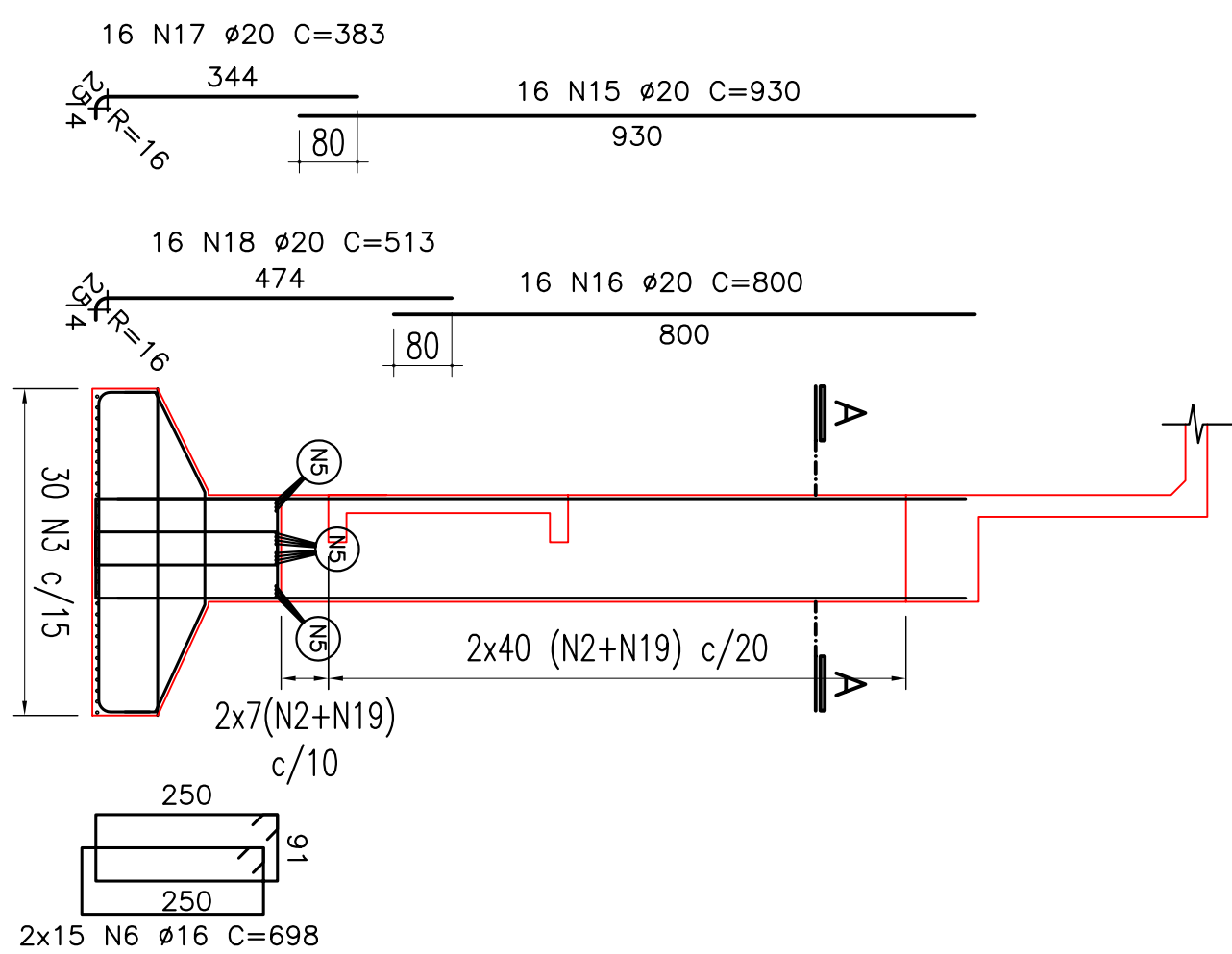
ESC 1:100



# ARMAÇÃO DOS PILARES PC E PD

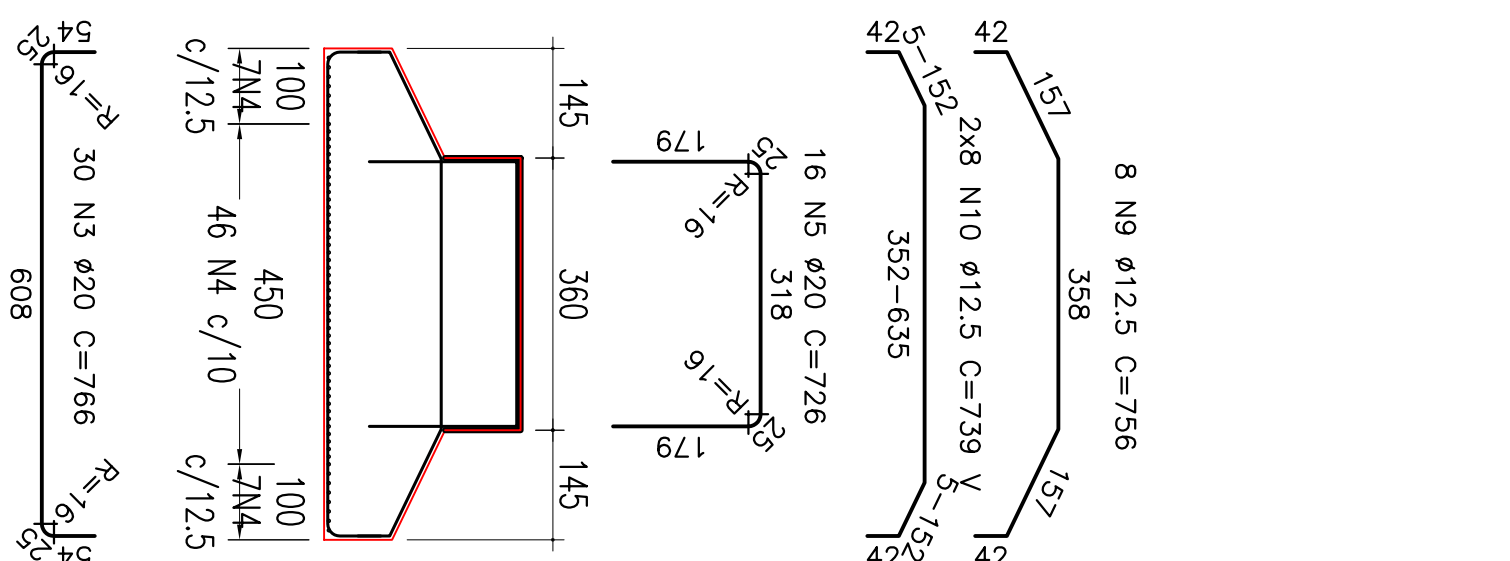
ELEVACÃO (2x)

ESC 1:100



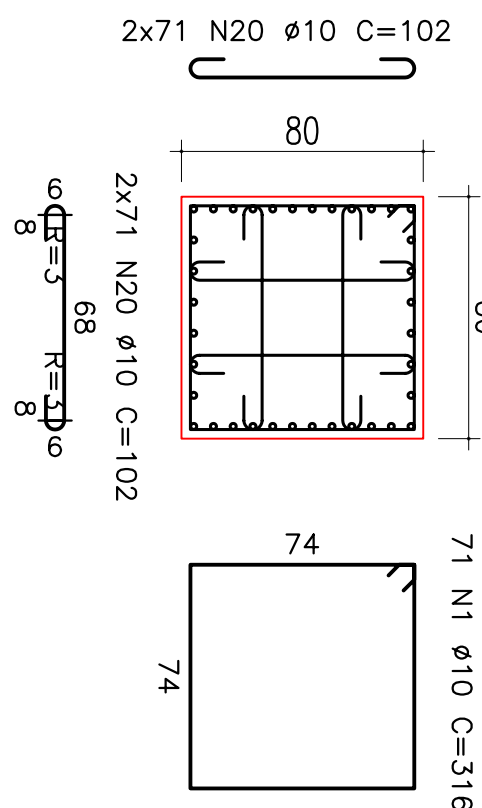
SAPATA PC E PD(1x)

ESC 1:100



CORTE A-A

ESC 1:25 (2x)

TABELA DE FERROS (ENCONTRO 01)[illegible]

RESUMO DO AÇO		
CA-50A	10	1242
CA-50A	12.5	364
CA-50A	16	734
CA-50A	20	6661
PESO TOTAL		9000

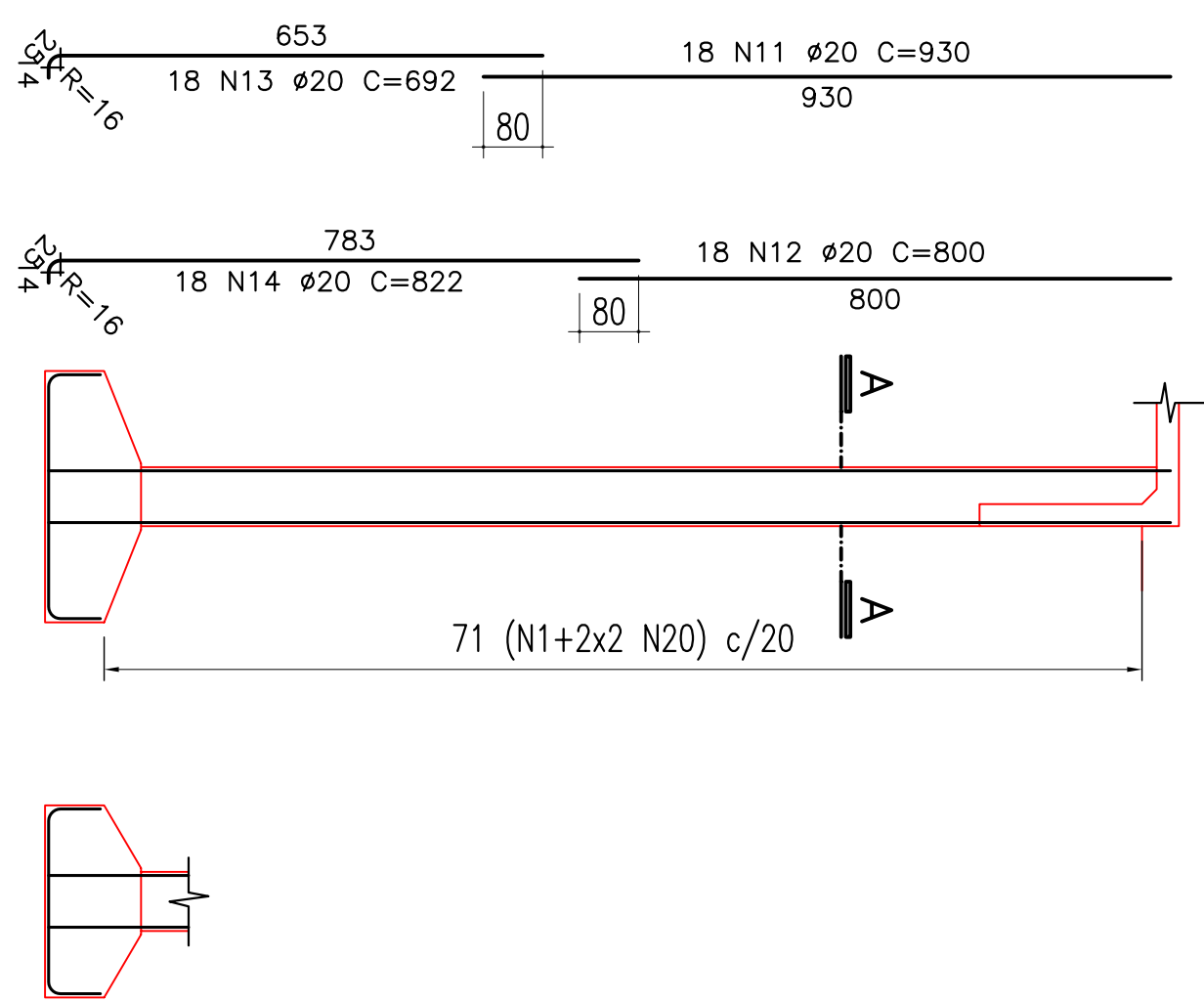
[illegible]

ENCONTRO 02

## ARMAÇÃO DOS PILARES PA E PB

ELEVACÃO (2x)

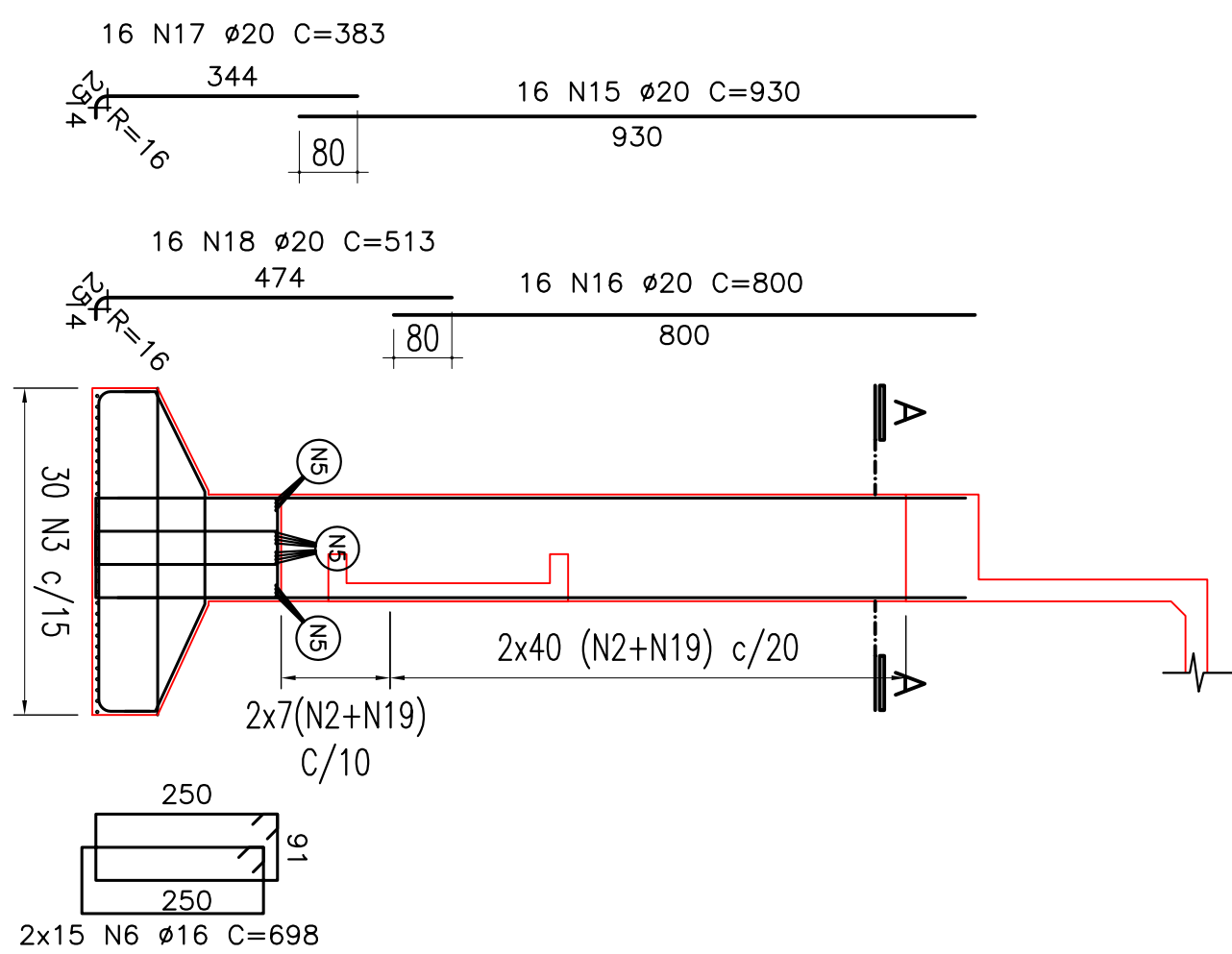
ESC 1:100



## ARMAÇÃO DOS PILARES PC E PD

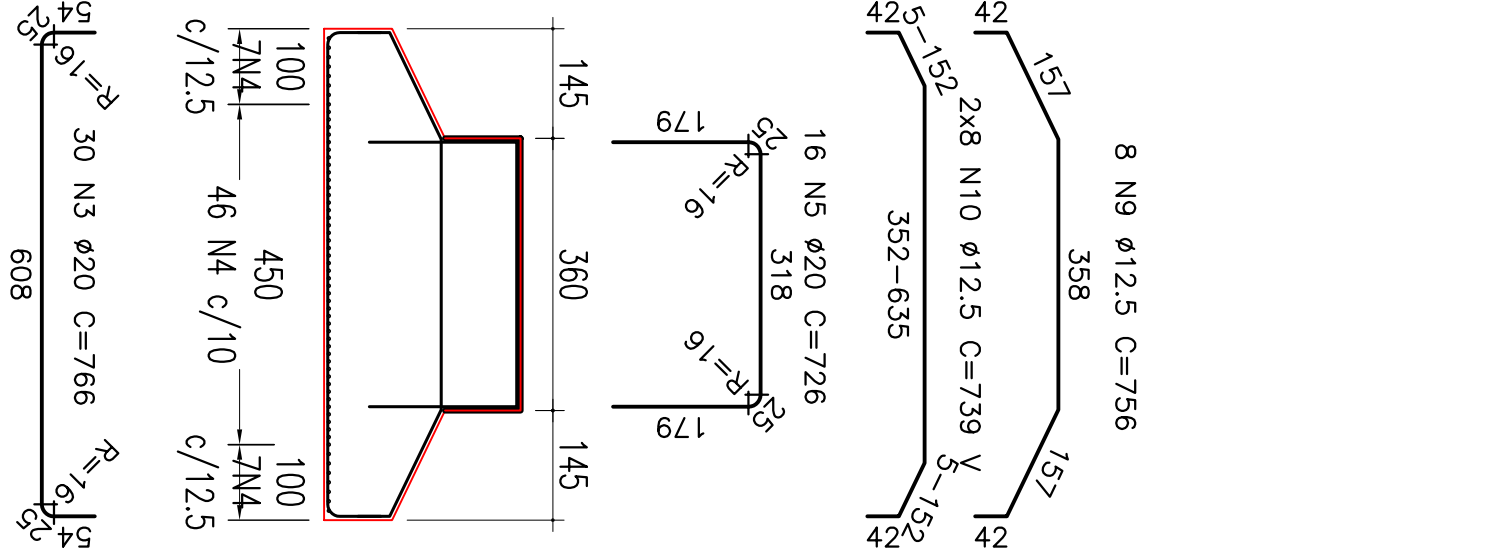
ELEVACÃO (2x)

ESC 1:100



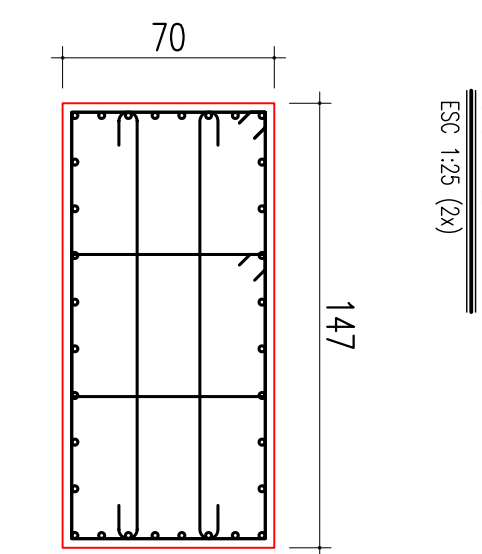
SAPATA PC E PD(1x)

ESC 1:100



CORTE A-A


ESC 1:25 (2x)



Tipo	Pos.	Bit. (mm)	Quant.	COMP. (cm)	
				C.Unt.	C.Tot.

	ARMACÃO DOS PLÁTOS PA E PB (2x)	ARMACÃO DOS PLÁTOS PC E PD (2x)	RESUMO DO AÇO
CA 50A	4,87	3,77	CA 50A
CA 50B	2,94	2,94	CA 50B
CA 50C	2,94	2,94	CA 50C
CA 50D	2,94	2,94	CA 50D
CA 50E	2,94	2,94	CA 50E
CA 50F	2,94	2,94	CA 50F
CA 50G	2,94	2,94	CA 50G
CA 50H	2,94	2,94	CA 50H
CA 50I	2,94	2,94	CA 50I
CA 50J	2,94	2,94	CA 50J
CA 50K	2,94	2,94	CA 50K
CA 50L	2,94	2,94	CA 50L
CA 50M	2,94	2,94	CA 50M
CA 50N	2,94	2,94	CA 50N
CA 50O	2,94	2,94	CA 50O
CA 50P	2,94	2,94	CA 50P
CA 50Q	2,94	2,94	CA 50Q
CA 50R	2,94	2,94	CA 50R
CA 50S	2,94	2,94	CA 50S
CA 50T	2,94	2,94	CA 50T
CA 50U	2,94	2,94	CA 50U
CA 50V	2,94	2,94	CA 50V
CA 50W	2,94	2,94	CA 50W
CA 50X	2,94	2,94	CA 50X
CA 50Y	2,94	2,94	CA 50Y
CA 50Z	2,94	2,94	CA 50Z
CA 50AA	2,94	2,94	CA 50AA
CA 50AB	2,94	2,94	CA 50AB
CA 50AC	2,94	2,94	CA 50AC
CA 50AD	2,94	2,94	CA 50AD
CA 50AE	2,94	2,94	CA 50AE
CA 50AF	2,94	2,94	CA 50AF
CA 50AG	2,94	2,94	CA 50AG
CA 50AH	2,94	2,94	CA 50AH
CA 50AI	2,94	2,94	CA 50AI
CA 50AJ	2,94	2,94	CA 50AJ
CA 50AK	2,94	2,94	CA 50AK
CA 50AL	2,94	2,94	CA 50AL
CA 50AM	2,94	2,94	CA 50AM
CA 50AN	2,94	2,94	CA 50AN
CA 50AO	2,94	2,94	CA 50AO
CA 50AP	2,94	2,94	CA 50AP
CA 50AQ	2,94	2,94	CA 50AQ
CA 50AR	2,94	2,94	CA 50AR
CA 50AS	2,94	2,94	CA 50AS
CA 50AT	2,94	2,94	CA 50AT
CA 50AU	2,94	2,94	CA 50AU
CA 50AV	2,94	2,94	CA 50AV
CA 50AW	2,94	2,94	CA 50AW
CA 50AX	2,94	2,94	CA 50AX
CA 50AY	2,94	2,94	CA 50AY
CA 50AZ	2,94	2,94	CA 50AZ
CA 50BA	2,94	2,94	CA 50BA
CA 50BB	2,94	2,94	CA 50BB
CA 50BC	2,94	2,94	CA 50BC
CA 50BD	2,94	2,94	CA 50BD
CA 50BE	2,94	2,94	CA 50BE
CA 50BF	2,94	2,94	CA 50BF
CA 50BG	2,94	2,94	CA 50BG
CA 50BH	2,94	2,94	CA 50BH
CA 50BI	2,94	2,94	CA 50BI
CA 50BJ	2,94	2,94	CA 50BJ
CA 50BK	2,94	2,94	CA 50BK
CA 50BL	2,94	2,94	CA 50BL
CA 50BM	2,94	2,94	CA 50BM
CA 50BN	2,94	2,94	CA 50BN
CA 50BO	2,94	2,94	CA 50BO
CA 50BP	2,94	2,94	CA 50BP
CA 50BQ	2,94	2,94	CA 50BQ
CA 50BR	2,94	2,94	CA 50BR
CA 50BS	2,94	2,94	CA 50BS
CA 50BT	2,94	2,94	CA 50BT
CA 50BU	2,94	2,94	CA 50BU
CA 50BV	2,94	2,94	CA 50BV
CA 50BW	2,94	2,94	CA 50BW
CA 50BX	2,94	2,94	CA 50BX
CA 50BY	2,94	2,94	CA 50BY
CA 50BZ	2,94	2,94	CA 50BZ
CA 50CA	2,94	2,94	CA 50CA
CA 50CB	2,94	2,94	CA 50CB
CA 50CC	2,94	2,94	CA 50CC
CA 50CD	2,94	2,94	CA 50CD
CA 50CE	2,94	2,94	CA 50CE
CA 50CF	2,94	2,94	CA 50CF
CA 50CG	2,94	2,94	CA 50CG
CA 50CH	2,94	2,94	CA 50CH
CA 50CI	2,94	2,94	CA 50CI
CA 50CJ	2,94	2,94	CA 50CJ
CA 50CK	2,94	2,94	CA 50CK
CA 50CL	2,94	2,94	CA 50CL
CA 50CM	2,94	2,94	CA 50CM
CA 50CN	2,94	2,94	CA 50CN
CA 50CO	2,94	2,94	CA 50CO
CA 50CP	2,94	2,94	CA 50CP
CA 50CQ	2,94	2,94	CA 50CQ
CA 50CR	2,94	2,94	CA 50CR
CA 50CS	2,94	2,94	CA 50CS
CA 50CT	2,94	2,94	CA 50CT
CA 50CU	2,94	2,94	CA 50CU
CA 50CV	2,94	2,94	CA 50CV
CA 50CW	2,94	2,94	CA 50CW
CA 50CX	2,94	2,94	CA 50CX
CA 50CY	2,94	2,94	CA 50CY
CA 50CZ	2,94	2,94	CA 50CZ
CA 50DA	2,94	2,94	CA 50DA
CA 50DB	2,94	2,94	CA 50DB
CA 50DC	2,94	2,94	CA 50DC
CA 50DD	2,94	2,94	CA 50DD
CA 50DE	2,94	2,94	CA 50DE
CA 50DF	2,94	2,94	CA 50DF
CA 50DG	2,94	2,94	CA 50DG
CA 50DH	2,94	2,94	CA 50DH
CA 50DI	2,94	2,94	CA 50DI
CA 50DJ	2,94	2,94	CA 50DJ
CA 50DK	2,94	2,94	CA 50DK
CA 50DL	2,94	2,94	CA 50DL
CA 50DM	2,94	2,94	CA 50DM
CA 50DN	2,94	2,94	CA 50DN
CA 50DO	2,94	2,94	CA 50DO
CA 50DP	2,94	2,94	CA 50DP
CA 50DQ	2,94	2,94	CA 50DQ
CA 50DR	2,94	2,94	CA 50DR
CA 50DS	2,94	2,94	CA 50DS
CA 50DT	2,94	2,94	CA 50DT
CA 50DU	2,94	2,94	CA 50DU
CA 50DV	2,94	2,94	CA 50DV
CA 50DW	2,94	2,94	CA 50DW
CA 50DX	2,94	2,94	CA 50DX
CA 50DY	2,94	2,94	CA 50DY
CA 50DZ	2,94	2,94	CA 50DZ
CA 50EA	2,94	2,94	CA 50EA
CA 50EB	2,94	2,94	CA 50EB
CA 50EC	2,94	2,94	CA 50EC
CA 50ED	2,94	2,94	CA 50ED
CA 50EE	2,94	2,94	CA 50EE
CA 50EF	2,94	2,94	CA 50EF
CA 50EG	2,94	2,94	CA 50EG
CA 50EH	2,94	2,94	CA 50EH
CA 50EI	2,94	2,94	CA 50EI
CA 50EJ	2,94	2,94	CA 50EJ
CA 50EK	2,94	2,94	CA 50EK
CA 50EL	2,94	2,94	CA 50EL
CA 50EM	2,94	2,94	CA 50EM
CA 50EN	2,94	2,94	CA 50EN
CA 50EO	2,94	2,94	CA 50EO
CA 50EP	2,94	2,94	CA 50EP
CA 50EQ	2,94	2,94	CA 50EQ
CA 50ER	2,94	2,94	CA 50ER
CA 50ES	2,94	2,94	CA 50ES
CA 50ET	2,94	2,94	CA 50ET
CA 50EU	2,94	2,94	CA 50EU
CA 50EV	2,94	2,94	CA 50EV
CA 50EW	2,94	2,94	CA 50EW
CA 50EX	2,94	2,94	CA 50EX
CA 50EY	2,94	2,94	CA 50EY
CA 50EZ	2,94	2,94	CA 50EZ
CA 50FA	2,94	2,94	CA 50FA
CA 50FB	2,94	2,94	CA 50FB
CA 50FC	2,94	2,94	CA 50FC
CA 50FD	2,94	2,94	CA 50FD
CA 50FE	2,94	2,94	CA 50FE
CA 50FF	2,94	2,94	CA 50FF
CA 50FG	2,94	2,94	CA 50FG
CA 50FH	2,94	2,94	CA 50FH
CA 50FI	2,94	2,94	CA 50FI
CA 50FJ	2,94	2,94	CA 50FJ
CA 50FK	2,94	2,94	CA 50FK
CA 50FL	2,94	2,94	CA 50FL
CA 50FM	2,94	2,94	CA 50FM
CA 50FN	2,94	2,94	CA 50FN
CA 50FO	2,94	2,94	CA 50FO
CA 50FP	2,94	2,94	CA 50FP
CA 50FQ	2,94	2,94	CA 50FQ
CA 50FR	2,94	2,94	CA 50FR
CA 50FS	2,94	2,94	CA 50FS
CA 50FT	2,94	2,94	CA 50FT
CA 50FU	2,94	2,94	CA 50FU
CA 50FV	2,94	2,94	CA 50FV
CA 50FW	2,94	2,94	CA 50FW
CA 50FX	2,94	2,94	CA 50FX
CA 50FY	2,94	2,94	CA 50FY
CA 50FZ	2,94	2,94	CA 50FZ
CA 50GA	2,94	2,94	CA 50GA
CA 50GB	2,94	2,94	CA 50GB
CA 50GC	2,94	2,94	CA 50GC
CA 50GD	2,94	2,94	CA 50GD
CA 50GE	2,94	2,94	CA 50GE
CA 50GF	2,94	2,94	CA 50GF
CA 50GG	2,94	2,94	CA 50GG
CA 50GH	2,94	2,94	CA 50GH
CA 50GI	2,94	2,94	CA 50GI
CA 50GJ	2,94	2,94	CA 50GJ
CA 50GK	2,94	2,94	CA 50GK
CA 50GL	2,94	2,94	CA 50GL
CA 50GM	2,94	2,94	CA 50GM
CA 50GN	2,94	2,94	CA 50GN
CA 50GO	2,94	2,94	CA 50GO
CA 50GP	2,94	2,94	CA 50GP
CA 50GQ	2,94	2,94	CA 50GQ
CA 50GR	2,94	2,94	CA 50GR
CA 50GS	2,94	2,94	CA 50GS
CA 50GT	2,94	2,94	CA 50GT
CA 50GU	2,94	2,94	CA 50GU
CA 50GV	2,94	2,94	CA 50GV
CA 50GW	2,94	2,94	CA 50GW
CA 50GX	2,94	2,94	CA 50GX
CA 50GY	2,94	2,94	CA 50GY
CA 50GZ	2,94	2,94	CA 50GZ
CA 50HA	2,94	2,94	CA 50HA
CA 50HB	2,94	2,94	CA 50HB
CA 50HC	2,94	2,94	CA 50HC
CA 50HD	2,94	2,94	CA 50HD
CA 50HE	2,94	2,94	CA 50HE
CA 50HF	2,94	2,94	CA 50HF
CA 50HG	2,94	2,94	CA 50HG
CA 50HH	2,94	2,94	CA 50HH
CA 50HI	2,94	2,94	CA 50HI
CA 50HJ	2,94	2,94	CA 50HJ
CA 50HK	2,94	2,94	CA 50HK
CA 50HL	2,94	2,94	CA 50HL
CA 50HM	2,94	2,94	CA 50HM
CA 50HN	2,94	2,94	CA 50HN
CA 50HO	2,94	2,94	CA 50HO
CA 50HP	2,94	2,94	CA 50HP
CA 50HQ	2,94	2,94	CA 50HQ
CA 50HR	2,94	2,94	CA 50HR
CA 50HS	2,94	2,94	CA 50HS
CA 50HT	2,94	2,94	CA 50HT
CA 50HU	2,94	2,94	CA 50HU
CA 50HV	2,94	2,94	CA 50HV
CA 50HW	2,94	2,94	CA 50HW
CA 50HX	2,94	2,94	CA 50HX
CA 50HY	2,94	2,94	CA 50HY
CA 50HZ	2,94	2,94	CA 50HZ
CA 50IA	2,94	2,94	CA 50IA
CA 50IB	2,94	2,94	CA 50IB
CA 50IC	2,94	2,94	CA 50IC
CA 50ID	2,94	2,94	CA 50ID
CA 50IE	2,94	2,94	CA 50IE
CA 50IF	2,94	2,94	CA 50IF
CA 50IG	2,94	2,94	CA 50IG
CA 50IH	2,94	2,94	CA 50IH
CA 50II	2,94	2,94	CA 50II
CA 50IJ	2,94	2,94	CA 50IJ
CA 50IK	2,94	2,94	CA 50IK
CA 50IL	2,94	2,94	CA 50IL
CA 50IM	2,94	2,94	CA 50IM
CA 50IN	2,94	2,94	CA 50IN
CA 50IO	2,94	2,94	CA 50IO
CA 50IP	2,94	2,94	CA 50IP
CA 50IQ	2,94	2,94	CA 50IQ
CA 50IR	2,94	2,94	CA 50IR
CA 50IS	2,94	2,94	CA 50IS
CA 50IT	2,94	2,94	CA 50IT
CA 50IU	2,94	2,94	CA 50IU
CA 50IV	2,94	2,94	CA 50IV
CA 50IW	2,94	2,94	CA 50IW
CA 50IX	2,94	2,94	CA 50IX
CA 50IY	2,94	2,94	CA 50IY
CA 50IZ	2,94	2,94	CA 50IZ
CA 50JA	2,94	2,94	CA 50JA
CA 50JB	2,94	2,94	CA 50JB
CA 50JC	2,94	2,94	CA 50JC
CA 50JD	2,94	2,94	CA 50JD
CA 50JE	2,94	2,94	CA 50JE
CA 50JF	2,94	2,94	CA 50JF
CA 50JG	2,94	2,94	CA 50JG
CA 50JH	2,94	2,94	CA 50JH
CA 50JI	2,94	2,94	CA 50JI
CA 50JJ	2,94	2,94	CA 50JJ
CA 50JK	2,94	2,94	CA 50JK
CA 50JL	2,94	2,94	CA 50JL
CA 50JM	2,94	2,94	CA 50JM
CA 50JN	2,94	2,94	CA 50JN
CA 50JO	2,94	2,94	CA 50JO
CA 50JP	2,94	2,94	CA 50JP
CA 50JQ	2,94	2,94	CA 50JQ
CA 50JR	2,94	2,94	CA 50JR
CA 50JS	2,94	2,94	CA 50JS
CA 50JT	2,94	2,94	CA 50JT
CA 50JU	2,94	2,94	CA 50JU
CA 50JV	2,94	2,94	CA 50JV
CA 50JW	2,94	2,94	CA 50JW
CA 50JX	2,94	2,94	CA 50JX
CA 50JY	2,94	2,94	CA 50JY
CA 50JZ	2,94	2,94	CA 50JZ
CA 50KA	2,94	2,94	CA 50KA
CA 50KB	2,94	2,94	CA 50KB
CA 50KC	2,94	2,94	CA 50KC
CA 50KD	2,94	2,94	CA 50KD
CA 50KE	2,94	2,94	CA 50KE
CA 50KF	2,94	2,94	CA 50KF
CA			

CA-50A	10	1977.48	1242
CA-50A	12.5	370.6	354
CA-50A	16	467.32	734
CA-50A	20	2693.72	6661
	PESO TOTAL		90001

<p>ESTA FOI A PROPRIEDADE DO NORDESTE</p> <p>COMPANHIA FERROVIÁRIA DO NORDESTE</p> <p>E SEU CONTEÚDO NÃO DEVE SER COPIADO</p> <p>OU REPRODUZIDO, TENDENDO A LESAR O</p> <p>OU A PROPRIEDADE DO NORDESTE</p> <p>DA FERROVIA DO NORDESTE</p> <p>RESERVA-SE A DIRETORIA</p>		 <p>COMPANHIA FERROVIÁRIA DO NORDESTE</p>	
<p>APROVAÇÃO</p>	<p>SUBSISTENTE</p>	<p>OBJETO</p> <p>PROJETO EXECUTIVO</p>	<p>DESENHO Nº</p> <p>TR-338-008-PE-04E-2041</p>
<p>ESCALA</p>	<p>INDICAÇÃO</p>	<p>ARMADILHA DOS ENCONTROS 01 E 02</p> <p>PILARES E SAPATAS</p>	<p>REV.</p> <p>02</p>