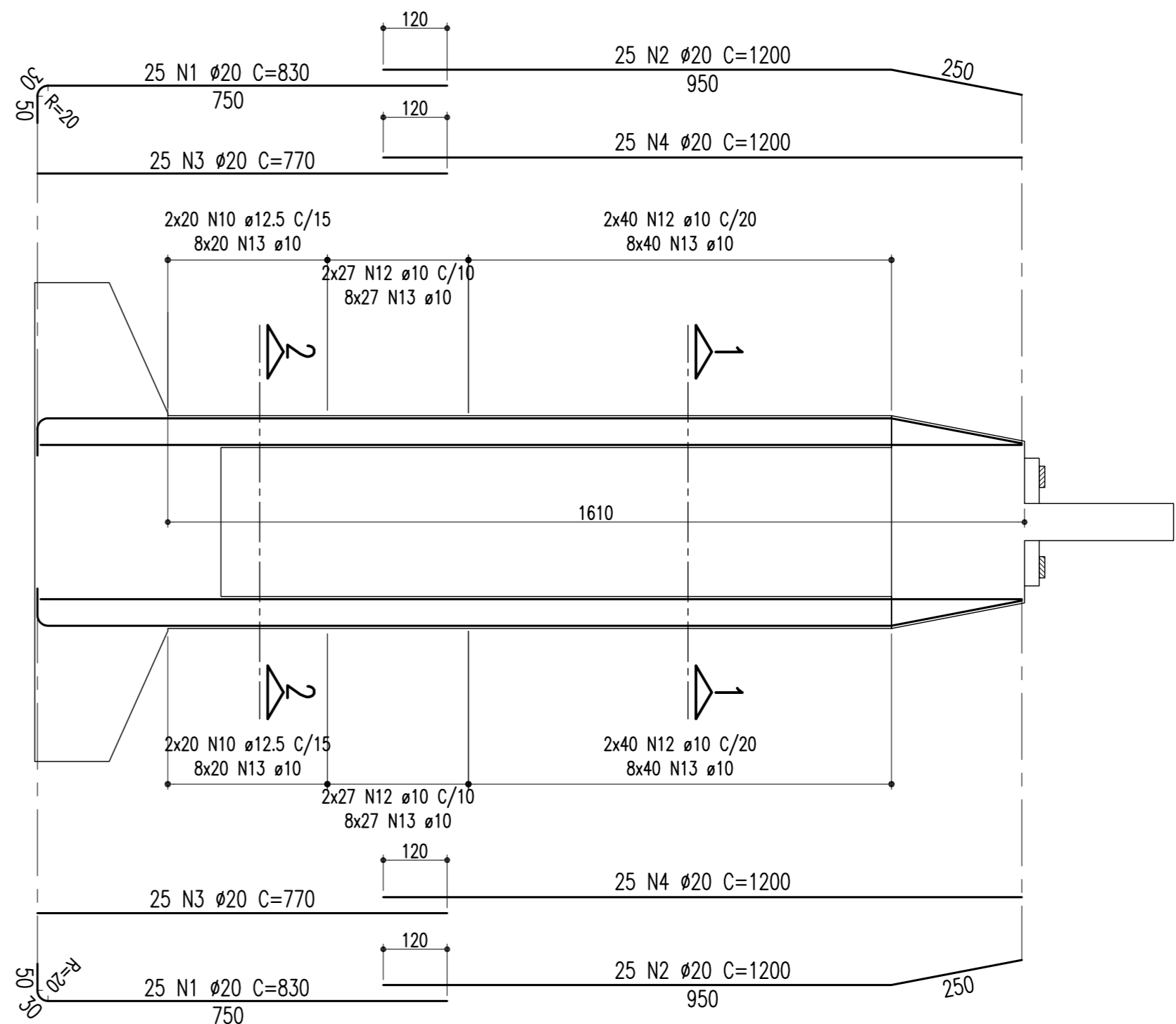
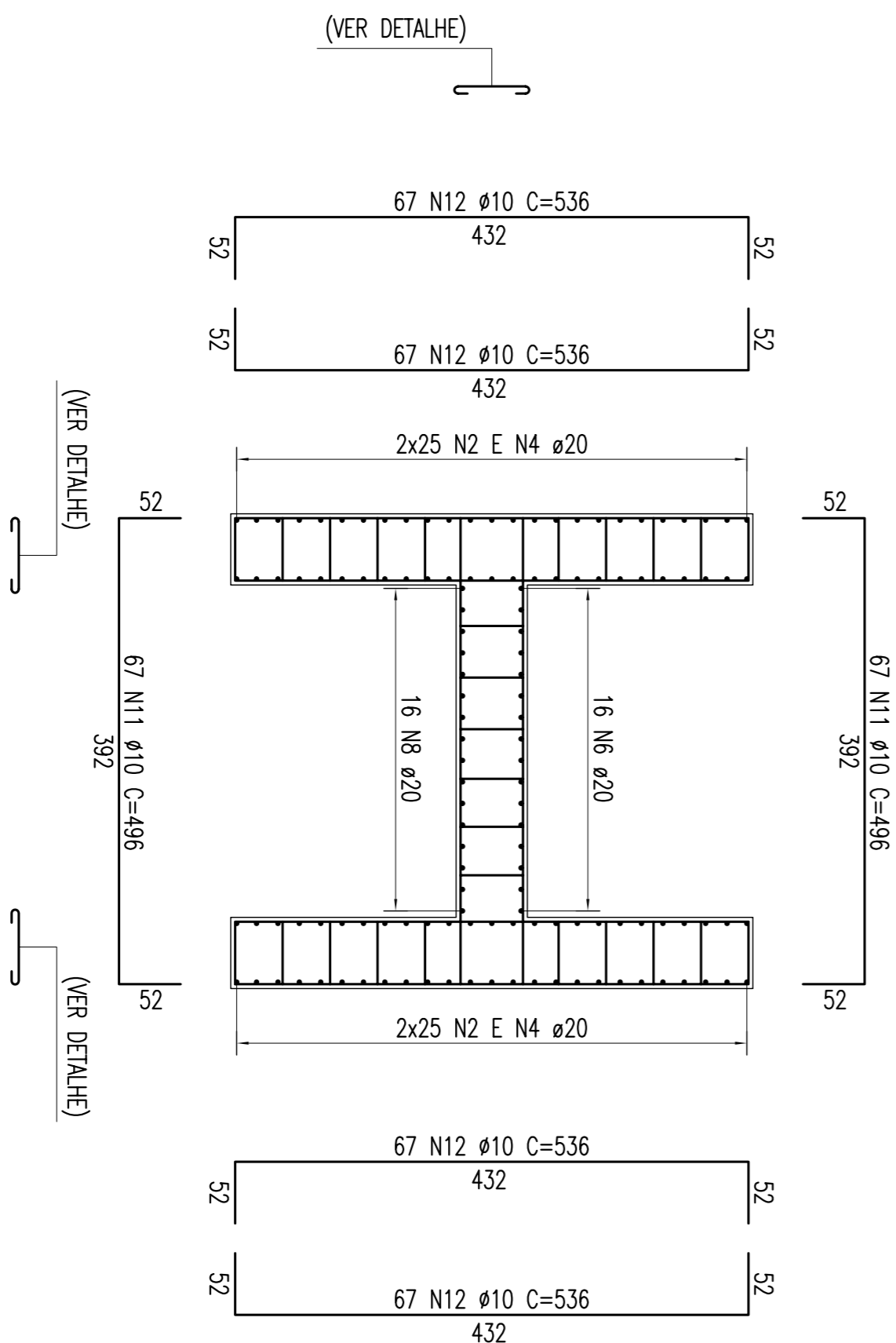


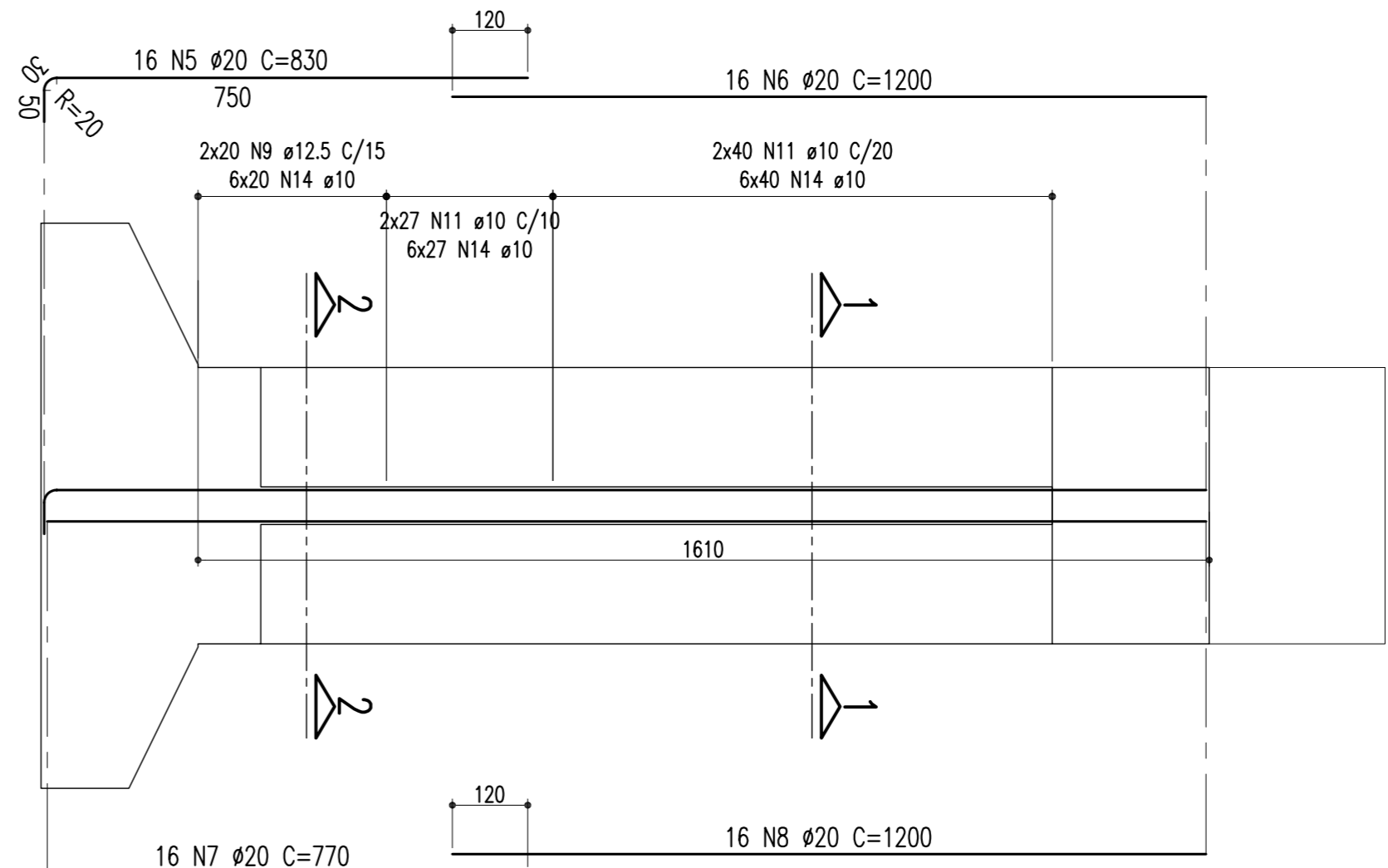
ARMAÇÃO DO PILAR
(P04 = 16,10m) CORTE A-A
 ESCALA = 1:100



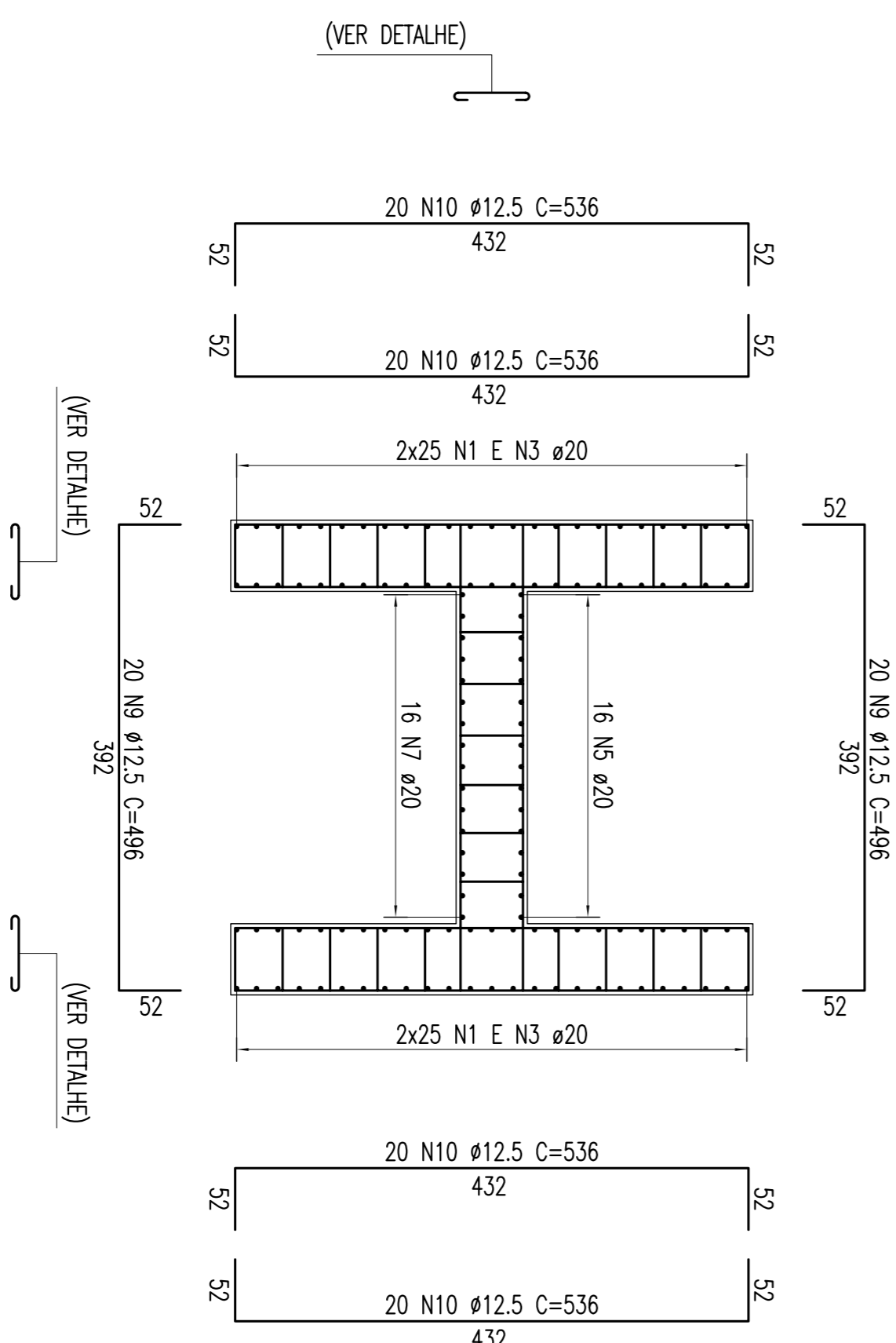
SEÇÃO 1-1
 ESCALA = 1:50



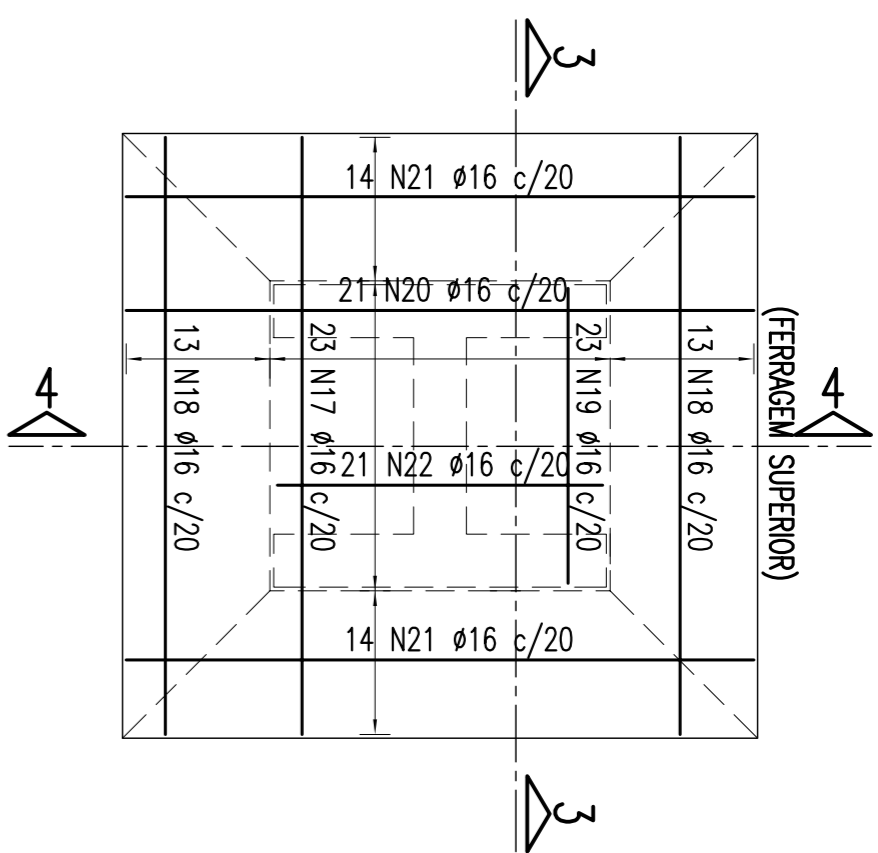
ARMAÇÃO DO PILAR
(P04 = 16,10m) CORTE B-B
 ESCALA = 1:100



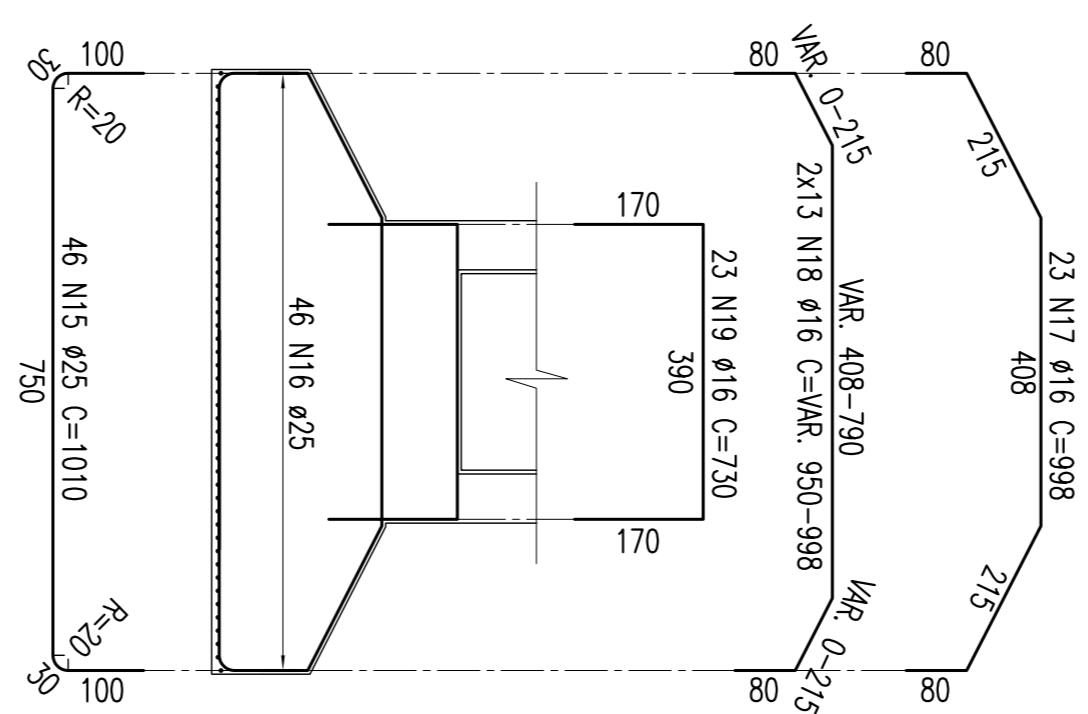
SEÇÃO 2-2
 ESCALA = 1:50



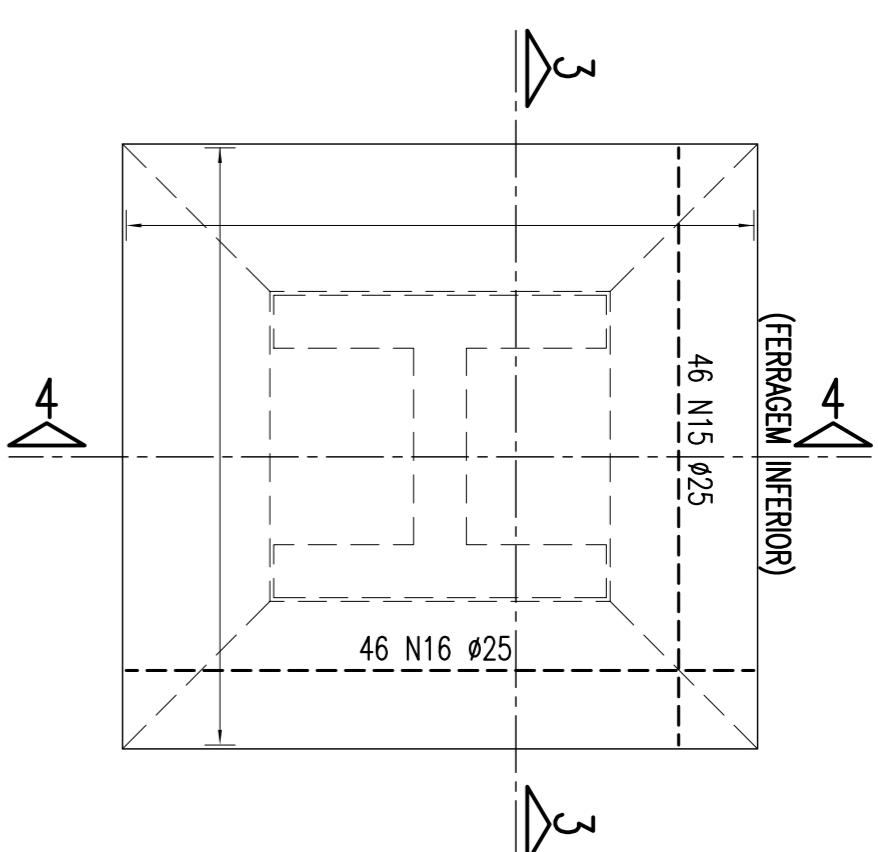
ARMAÇÃO DA SAPATA – 800/840 – P04
 ESCALA = 1:100



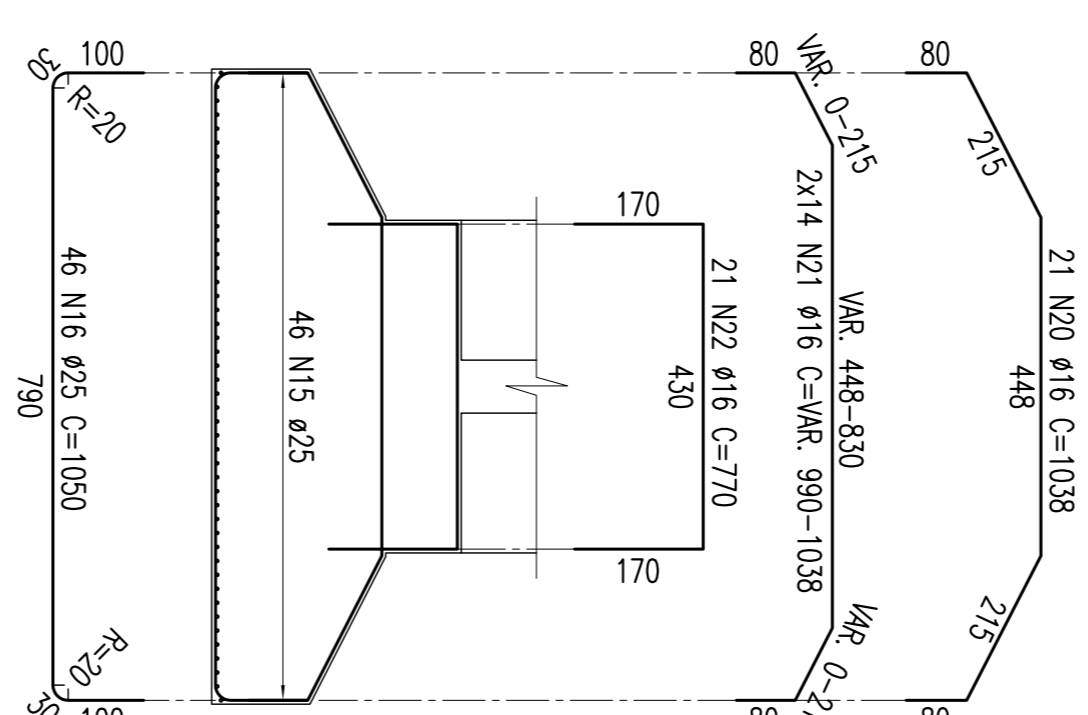
SEÇÃO 3-3
 ESCALA = 1:100



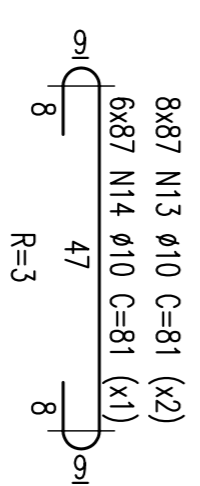
ARMAÇÃO DA SAPATA – 800/840 – P04
 ESCALA = 1:100



SEÇÃO 4-4
 ESCALA = 1:100



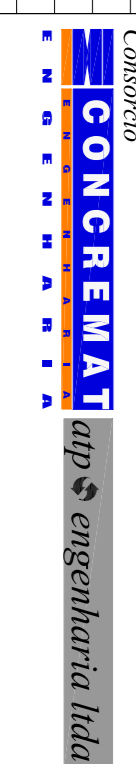
DETALHE DO AÇOUCIEIRO
 ESCALA = 1:12,5



NOTAS:
 Concreto Pilar e Sapata: Fck=25Mpa

TABELA DE FERROS				
TIPO	POS.	BIT.	QUANT.	C.TOT.
			(cm)	(cm)
ARM. PILAR P04 = 16,10m (1 x)				
CA-50A	1	20	50	830
CA-50A	2	20	50	61500
CA-50A	3	20	50	39500
CA-50A	4	20	50	60000
CA-50A	5	20	16	13280
CA-50A	6	20	16	19200
CA-50A	7	20	16	13200
CA-50A	8	20	16	12000
CA-50A	9	20	16	19840
CA-50A	10	12,5	80	538
CA-50A	11	10	134	42880
CA-50A	12	10	268	6464
CA-50A	13	10	536	143648
CA-50A	14	10	1392	112752
CA-50A	15	10	522	42282
ARM. SAPATA: P04 (1 x)				
CA-50A	15	25	46	1010
CA-50A	16	25	46	46460
CA-50A	17	16	1050	48300
CA-50A	18	16	23	22954
CA-50A	19	16	26	19840
CA-50A	20	16	23	16790
CA-50A	21	16	21	1038
CA-50A	22	16	28	28420
CA-50A	23	16	28	770
CA-50A	24	16	21	16170
RESUMO DO AÇO				
PARA SAPATA/PILAR P04)				
PESO CA-50A Ø 25	947,60 m		3790,40Kg	
PESO CA-50A Ø 20	2640,00 m		6600,00Kg	
PESO CA-50A Ø 16	1314,82 m		2353,71Kg	
PESO CA-50A Ø 12,5	627,20 m		627,20Kg	
PESO CA-50A Ø 10	3651,46 m		2300,42Kg	
PESO SUB-TOTAL CA-50A			15671,73Kg	
PESO TOTAL				
(PARA O1 SAPATA/PILAR) =			15671,73Kg	

REVISÃO DO PROJETO EXECUTIVO		EMITENTE		VERIFICAÇÃO		APROVAÇÃO		CÓDIGO		DOCUMENTOS DE REFERENCIA		OBJETO	
Nº	DISCRIMINAÇÃO	REVISORES											
02	REVISÃO DO PROJETO EXECUTIVO												
01	REVISÃO GERAL												
	DISCRIMINAÇÃO												
	REVISORES												



COMPANHIA FERROVIÁRIA DO NORDESTE