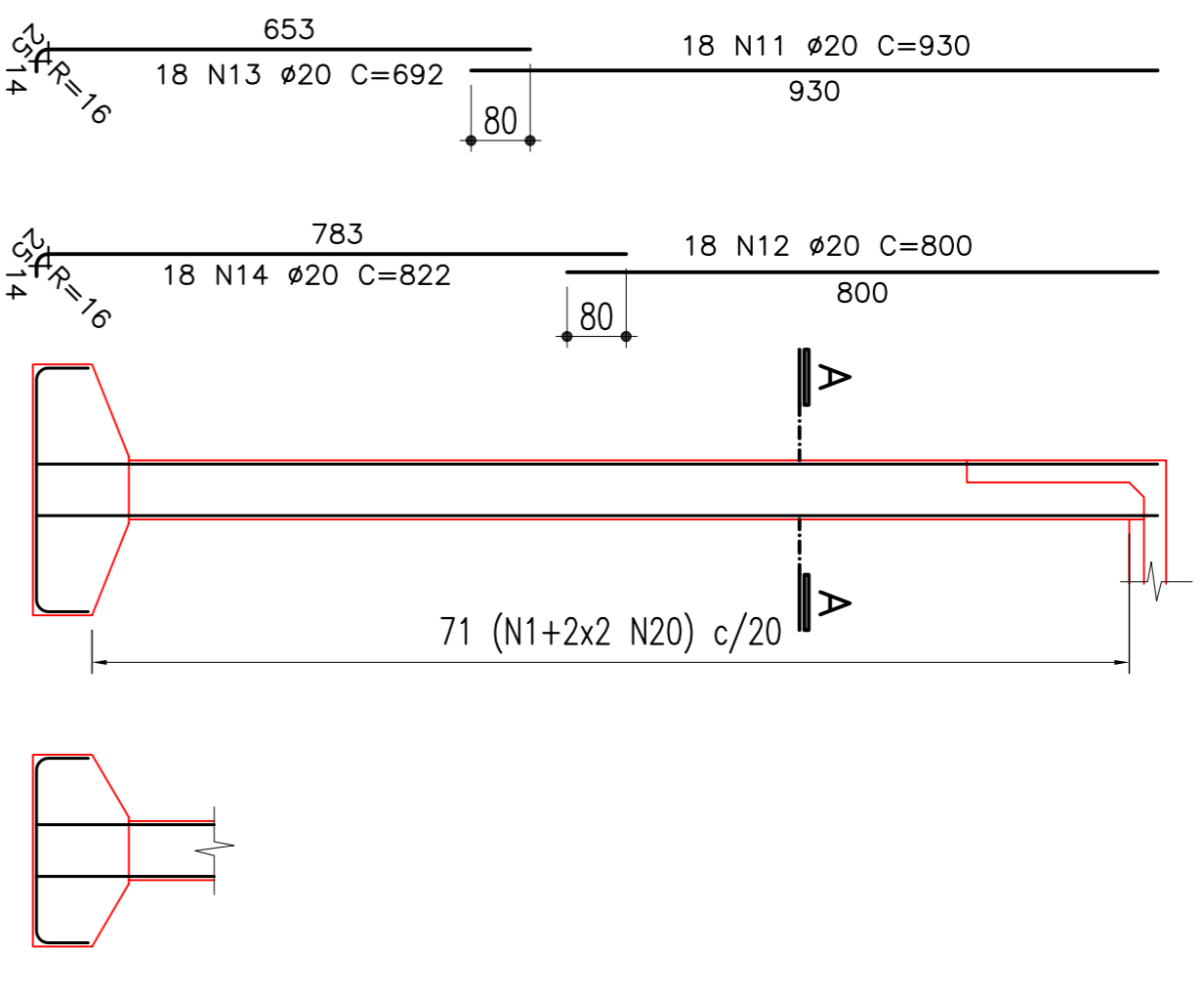


**ENCONTRO 01**

**ARMAÇÃO DOS PILARES PA E PB**

**ELEVÇÃO (2x)**

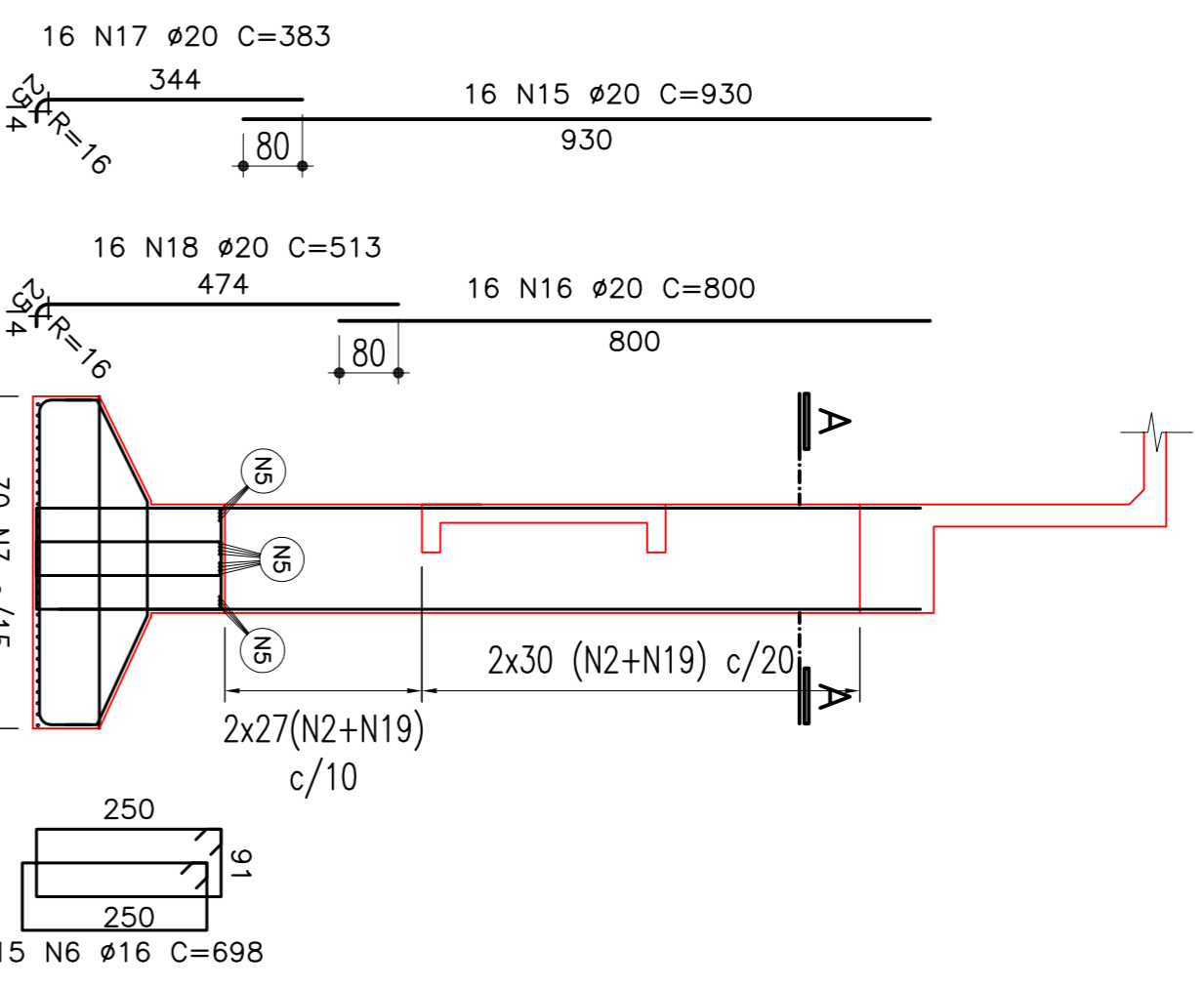
ESC 1:100



**ARMAÇÃO DOS PILARES PC E PD**

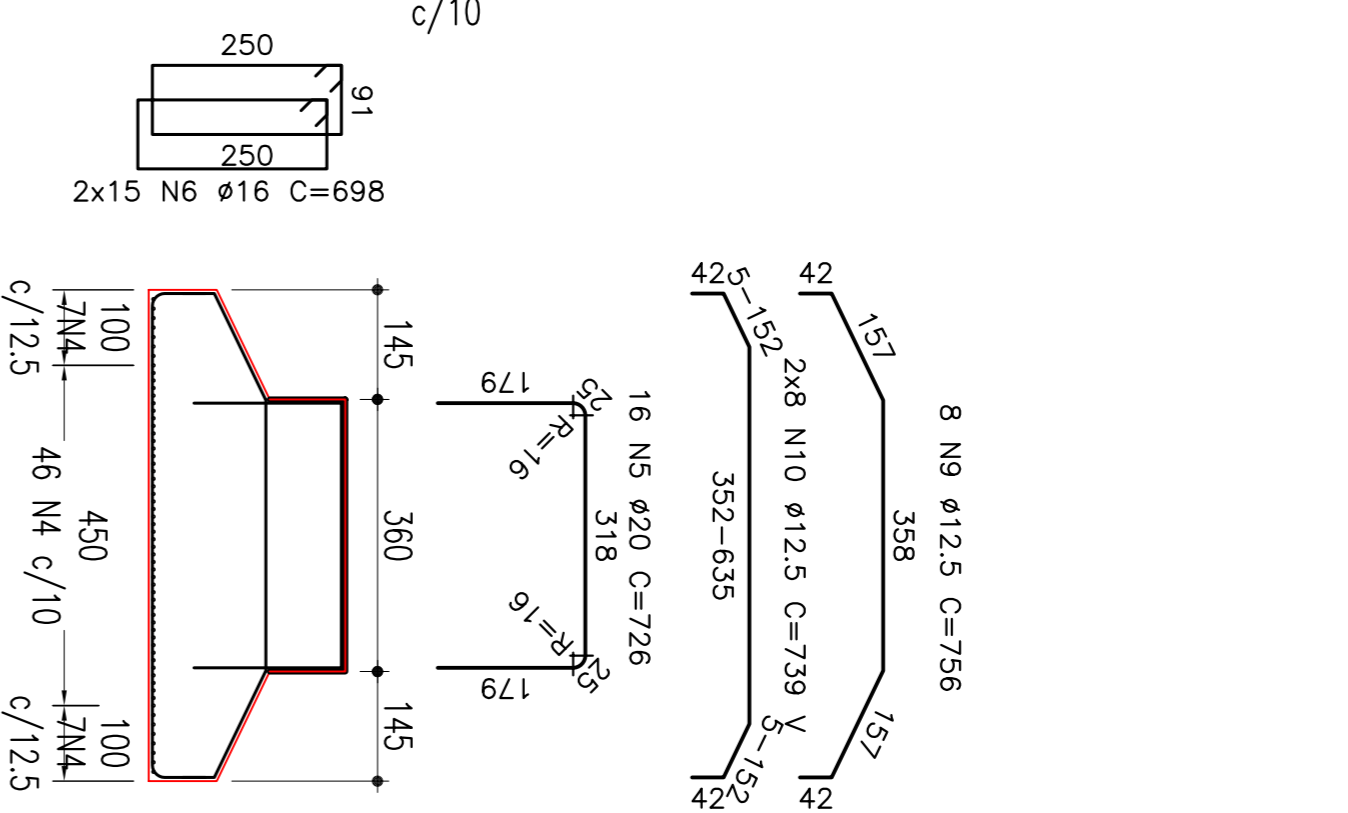
**ELEVÇÃO (2x)**

ESC 1:100



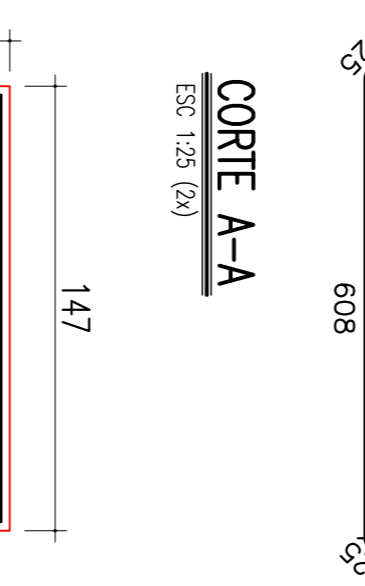
**SAPATA PC E PD(1x)**

ESC 1:100



**CORTE A-A**

ESC 1:25 (2x)



**TABELA DE FERRO (ENCONTRO 01)**

Pos. (mm)	Bit.	Quant.	COMP. (cm)	Pos. (mm)	Bit.	Quant.	COMP. (cm)
1	10	71	316,0	1	10	71	316,0
2	20	18	930,0	2	20	18	930,0
3	20	18	800,0	3	20	18	800,0
4	20	18	822,0	4	20	18	822,0
5	20	18	692,0	5	20	18	692,0
6	20	18	2992,0	6	20	18	2992,0
7	21	284	102,0	7	21	284	102,0
8	14	14	448,0	8	14	14	448,0
9	16	18	368,0	9	16	18	368,0
10	16	18	1324,0	10	16	18	1324,0
11	10	114	169,0	11	10	114	169,0
12	16	16	930,0	12	16	16	930,0
13	20	16	800,0	13	20	16	800,0
14	20	16	383,0	14	20	16	383,0
15	20	16	513,0	15	20	16	513,0
16	10	114	336,0	16	10	114	336,0
17	20	30	766,0	17	20	30	766,0
18	20	60	566,0	18	20	60	566,0
19	16	16	726,0	19	16	16	726,0
20	30	30	698,0	20	30	30	698,0
21	16	16	862,0	21	16	16	862,0
22	19	19	556,0	22	19	19	556,0
23	8	8	756,0	23	8	8	756,0
24	16	16	604,8	24	16	16	604,8
25	16	16	1182,4	25	16	16	1182,4
TOTAL:			9127	TOTAL:			9127

**RESUMO GERAL**

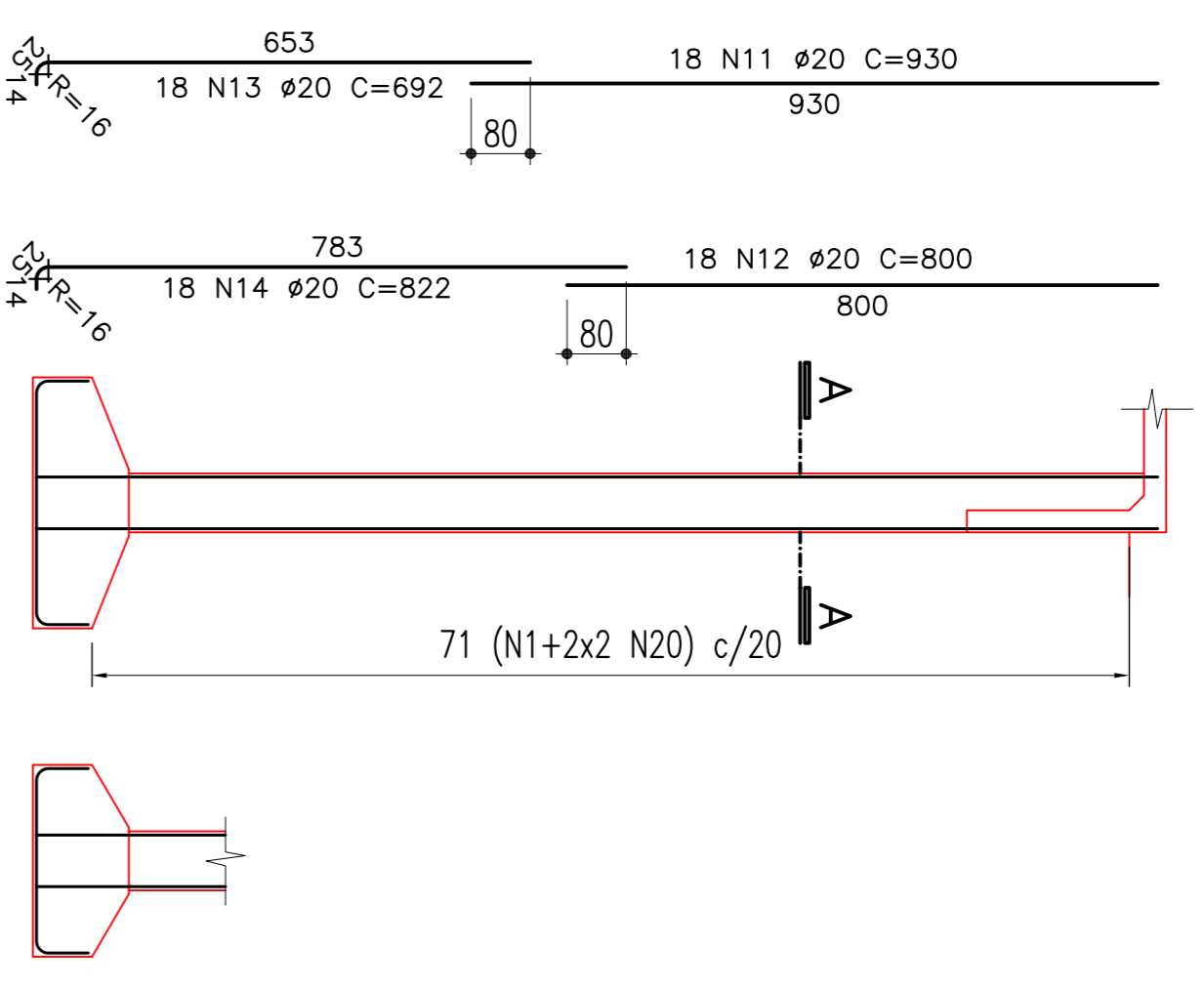
ACO	ø(mm)	COMP. (m)	MASSA (kg)
CA-50A	10	2179,48	1369
CA-50A	12,5	370,60	364
CA-50A	16	467,32	734
CA-50A	20	2693,72	6661
TOTAL:			9127

**ENCONTRO 02**

**ARMAÇÃO DOS PILARES PA E PB**

**ELEVÇÃO (2x)**

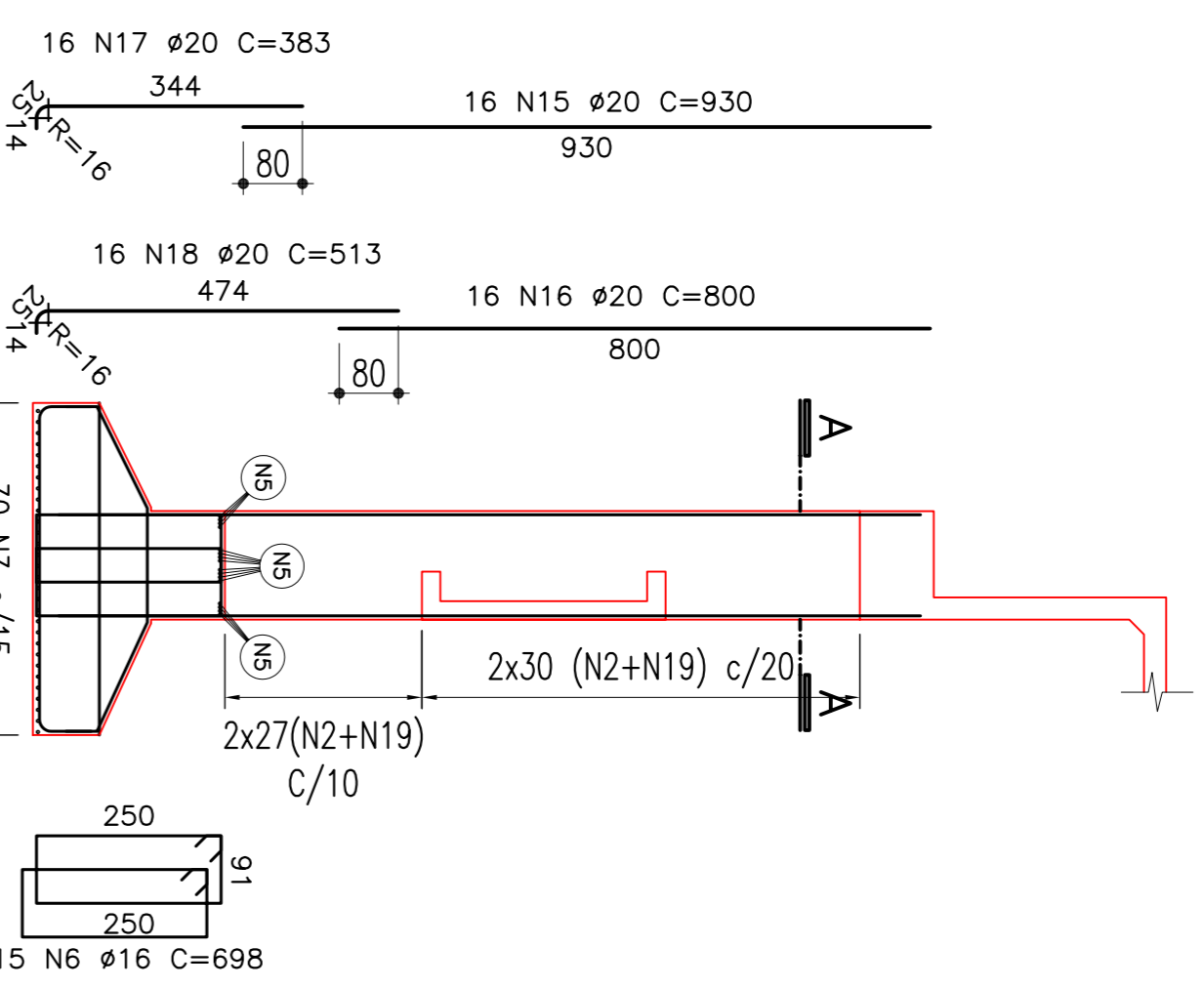
ESC 1:100



**ARMAÇÃO DOS PILARES PC E PD**

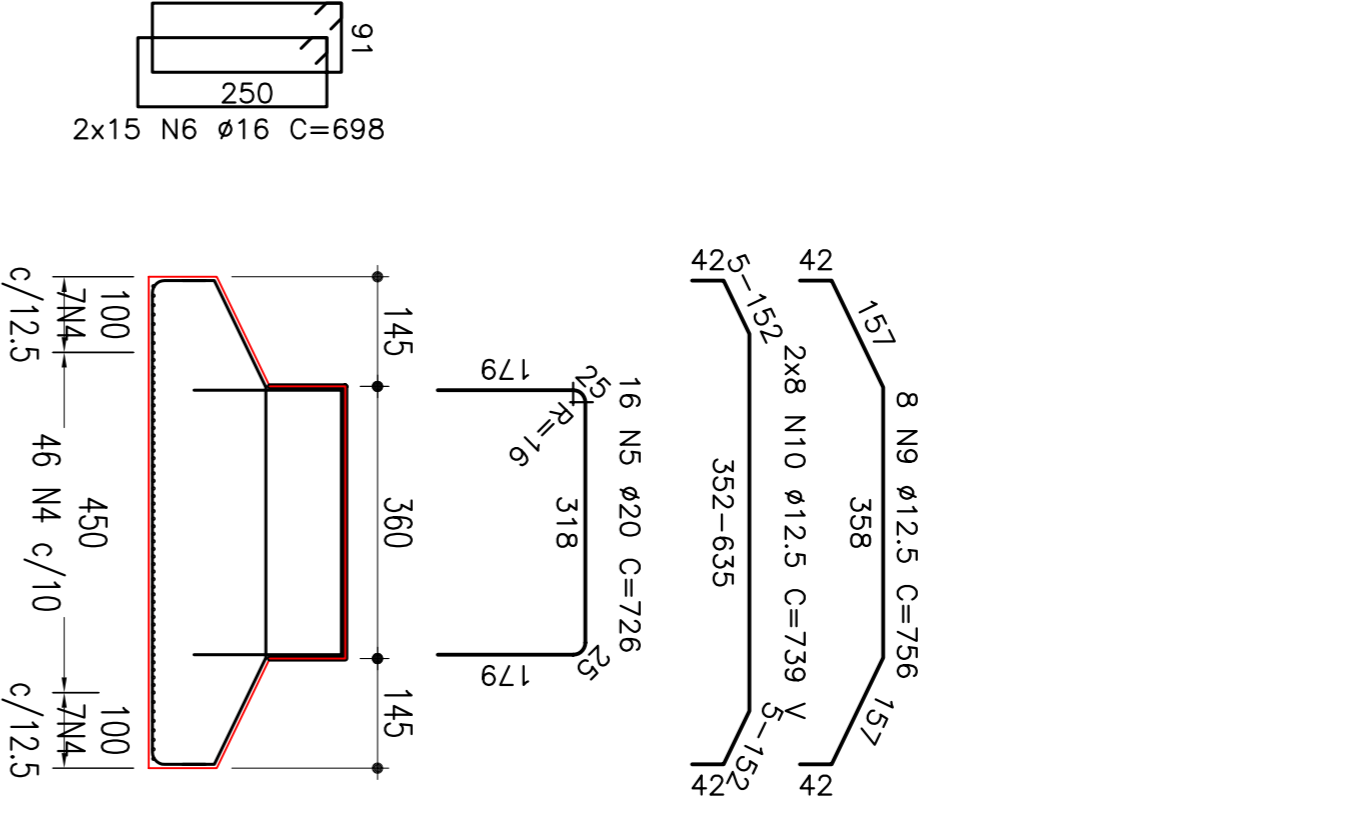
**ELEVÇÃO (2x)**

ESC 1:100



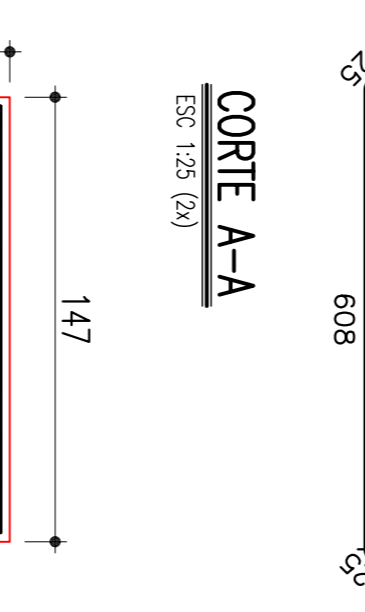
**SAPATA PC E PD(1x)**

ESC 1:100



**CORTE A-A**

ESC 1:25 (2x)



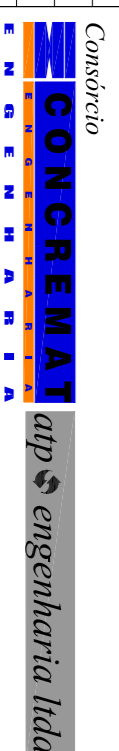
**TABELA DE FERRO (ENCONTRO 02)**

Pos. (mm)	Bit.	Quant.	COMP. (cm)	Pos. (mm)	Bit.	Quant.	COMP. (cm)
1	10	71	316,0	1	10	71	316,0
2	20	18	930,0	2	20	18	930,0
3	20	18	800,0	3	20	18	800,0
4	20	18	822,0	4	20	18	822,0
5	20	18	692,0	5	20	18	692,0
6	20	18	2992,0	6	20	18	2992,0
7	21	284	102,0	7	21	284	102,0
8	14	14	448,0	8	14	14	448,0
9	16	18	368,0	9	16	18	368,0
10	16	18	1324,0	10	16	18	1324,0
11	10	114	169,0	11	10	114	169,0
12	16	16	930,0	12	16	16	930,0
13	20	16	800,0	13	20	16	800,0
14	20	16	383,0	14	20	16	383,0
15	20	16	513,0	15	20	16	513,0
16	10	114	336,0	16	10	114	336,0
17	20	30	766,0	17	20	30	766,0
18	20	60	566,0	18	20	60	566,0
19	16	16	726,0	19	16	16	726,0
20	30	30	698,0	20	30	30	698,0
21	16	16	862,0	21	16	16	862,0
22	19	19	556,0	22	19	19	556,0
23	8	8	756,0	23	8	8	756,0
24	16	16	604,8	24	16	16	604,8
25	16	16	1182,4	25	16	16	1182,4
TOTAL:			9127	TOTAL:			9127

**RESUMO GERAL**

ACO	ø(mm)	COMP. (m)	MASSA (kg)
CA-50A	10	2179,48	1369
CA-50A	12,5	370,60	364
CA-50A	16	467,32	734
CA-50A	20	2693,72	6661
TOTAL:			9127

**CONVENÇÕES**



02	REVISÃO DO PROJETO EXECUTIVO	EMITENTE	VERIFICAÇÃO	APROVAÇÃO	CODIGO	DOCUMENTOS DE REFERENCIA	OBJETO	PROJ.:	Nº DE TUBULAÇÃO/300x300	COMPART. DN/R:	VIA/OTM/3A	SIGLA	ESCALA	INDICADA	REVISÃO	TR-338.004-RF-OUT-2007
01	REVISÃO GERAL							DES.:	MADEIRO LUCAS FERREIRA OLIVEIRA							
	DESCRIÇÃO							VERIF.:	MADEIRO LUCAS FERREIRA							
	REVISORES							RESPT.:	ALBERTO OLIVEIRA JOSE BRUNO							

<p>EM TUBULAÇÃO PROVEDORA SA</p> <p>GRUPO CONSTRUTORA FERROVIA DO NORDESTE</p> <p>E SERVIDOR DE CONTROLE DE QUALIDADE E TENDÊNCIA A MELHORIA</p> <p>OU A APROVAÇÃO DESTA DOCUMENTAÇÃO</p> <p>EM E A RESPONSABILIDADE SA</p> <p>RESPONSABILIDADE SOBRE O USUÁRIO.</p>			<p>COMPANHIA FERROVIÁRIA DO NORDESTE</p> <p>FERROVIA NOVA TRANSPORTADORA</p> <p>ELISEU MARTINS/PI - TRINDADE/PB</p> <p>LOTE 02 - OBRAS</p> <p>PROJETO EXECUTIVO</p> <p>ARMAÇÃO DOS ENCONTROS 01 E 02</p> <p>PILARES E SAPATAS</p>		
<p>APROVAÇÃO</p>			<p>REVISÃO</p>		
<p>DESIGNO Nº</p>			<p>TR-338.004-RF-OUT-2007</p>		