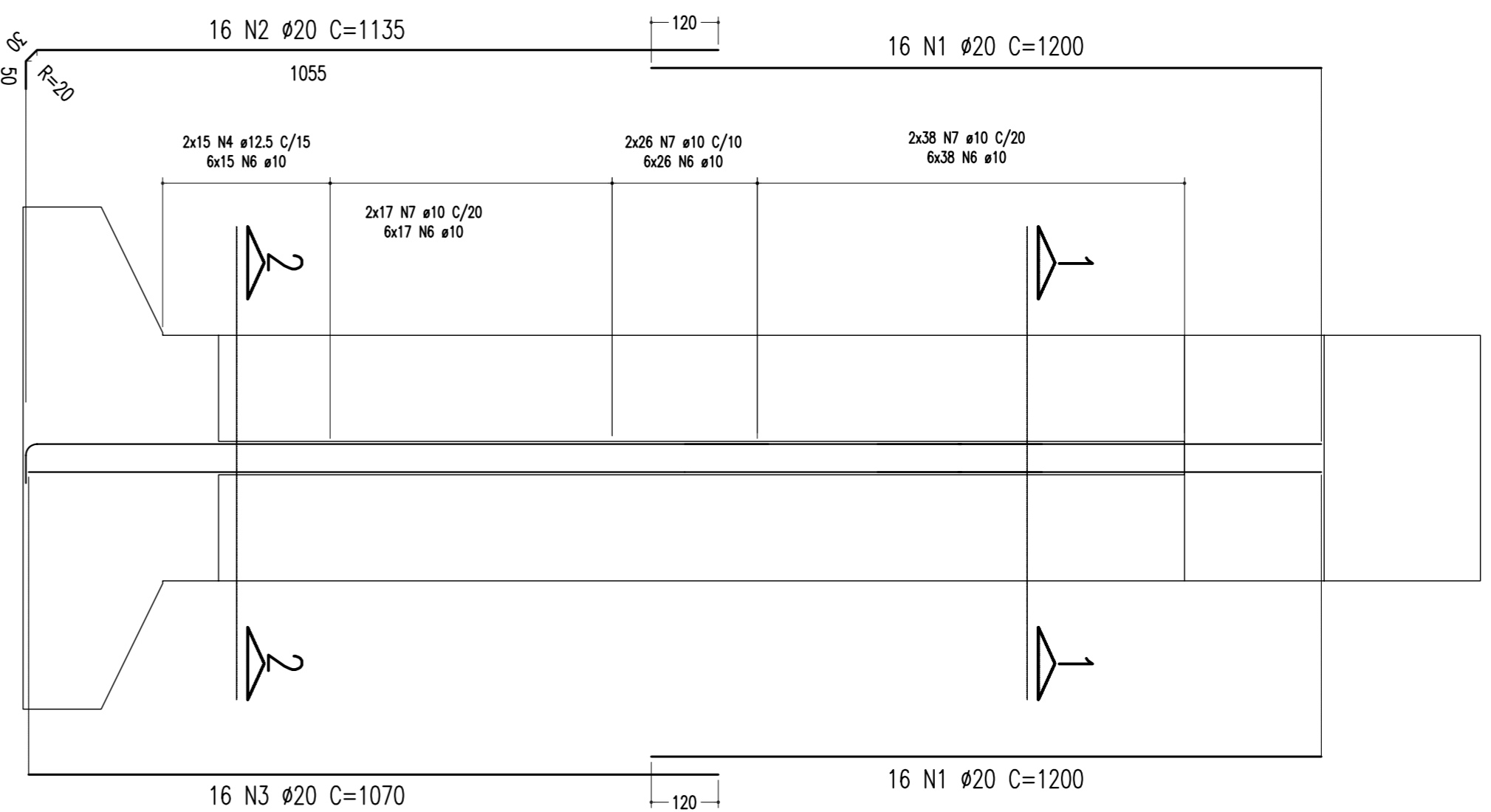


ARMAÇÃO DO PILAR (P06 = 19,80m)

CORTE AA

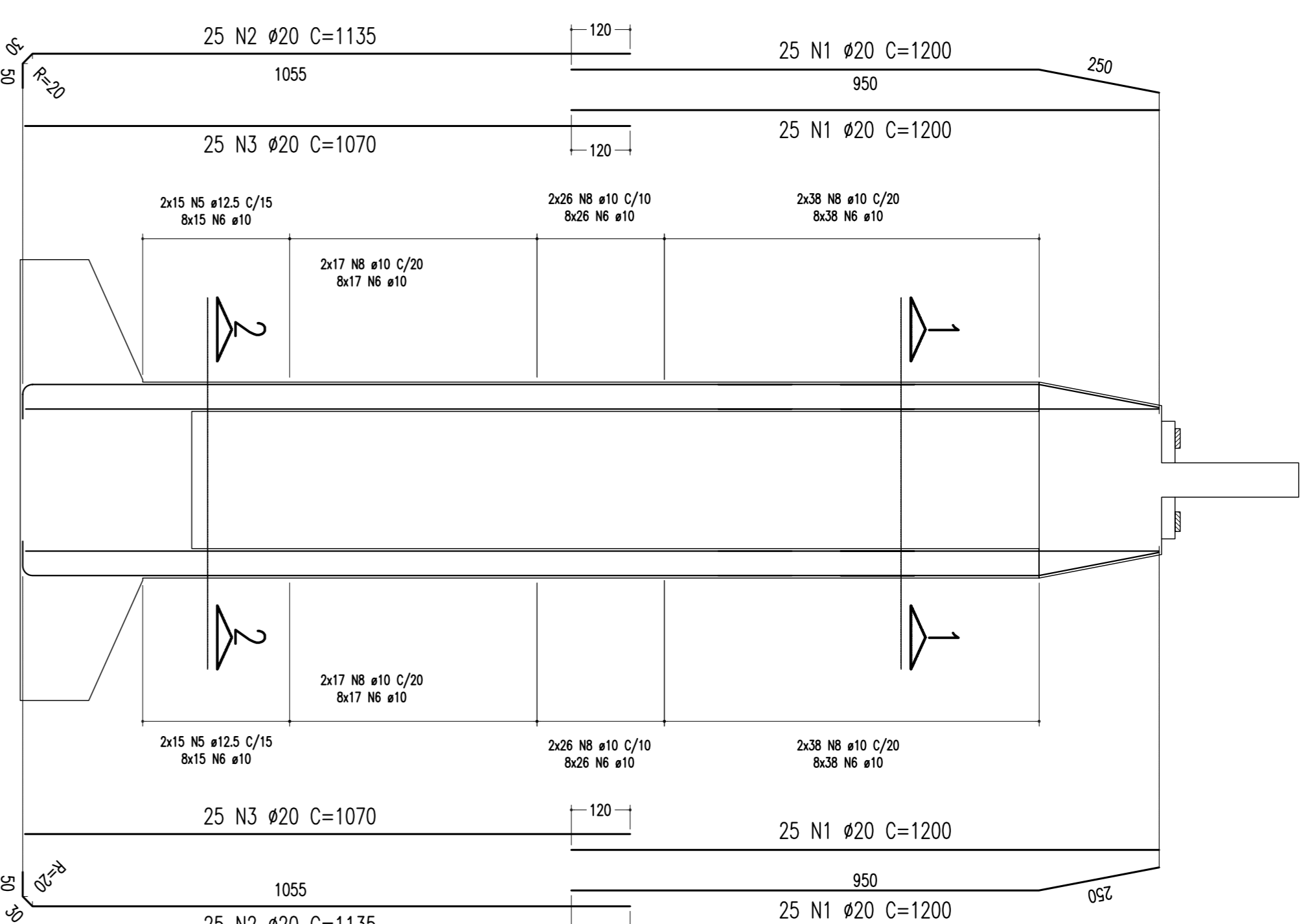
ESCALA = 1:100



ARMAÇÃO DO PILAR (P06 = 19,80m)

CORTE BB

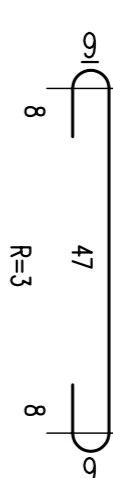
ESCALA = 1:100



DETALHE DO AÇOUGUEIRO

ESCALA = 1:125

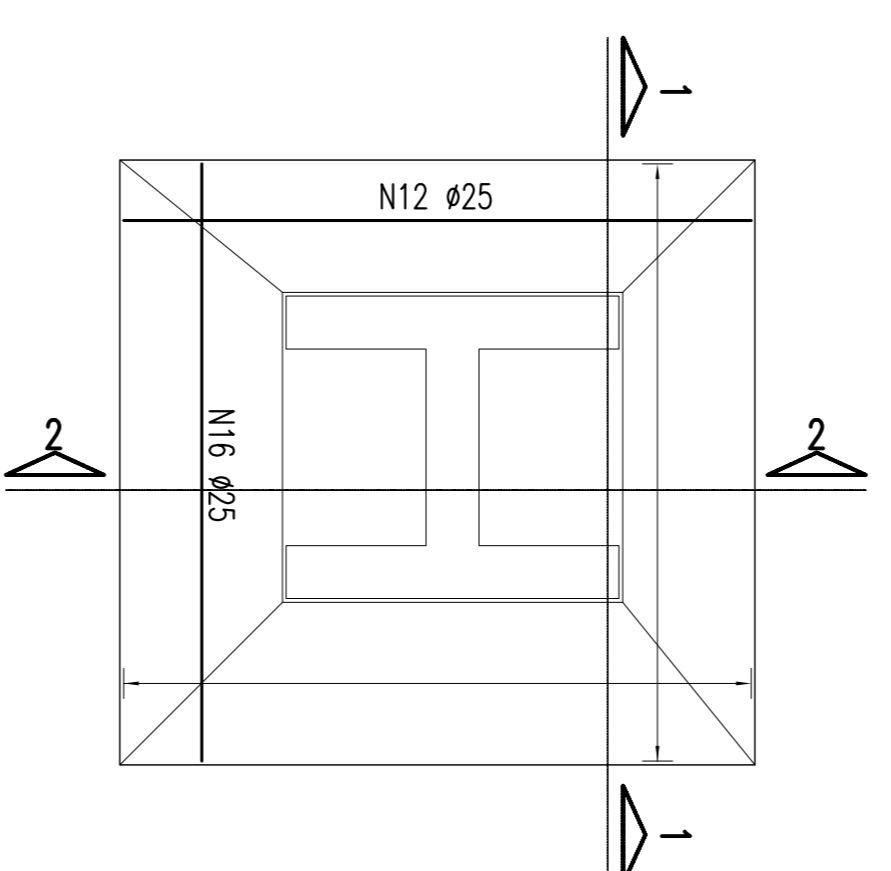
8x96 N6 Ø10 C=81
6x96 N6 Ø10 C=81



NOTAS
Concreto Pilar: fck=25Mpa

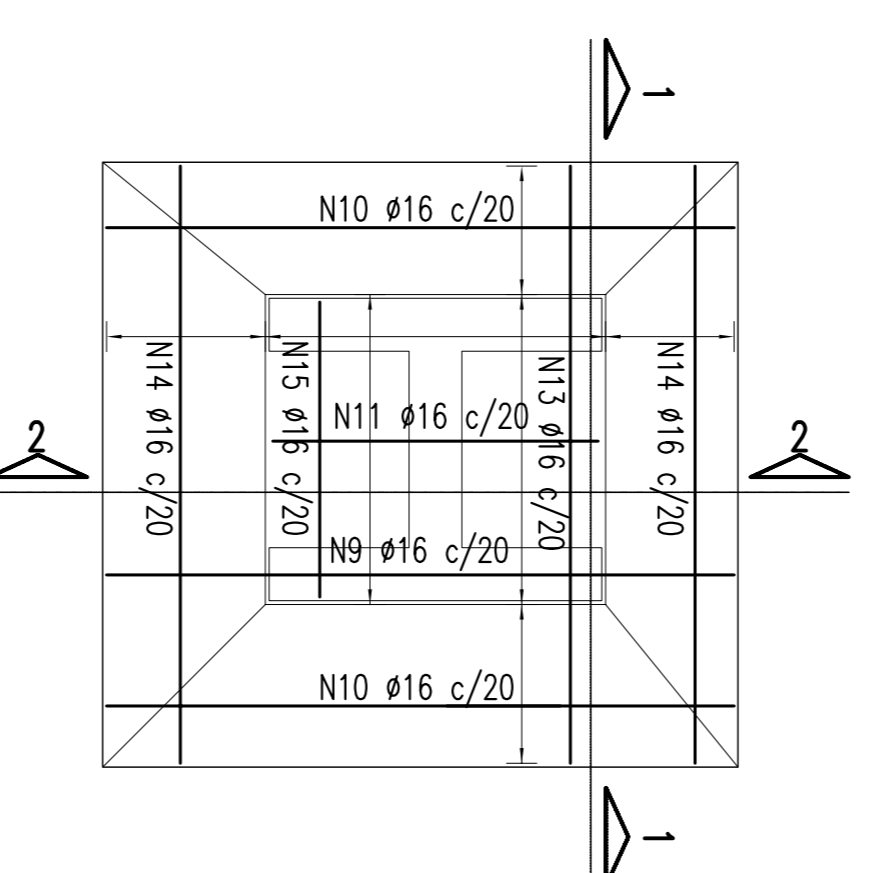
ARMAÇÃO DA SAPATA-840/800: (P06)

ESCALA = 1:100 (FERREÇA EM INTERIOR)



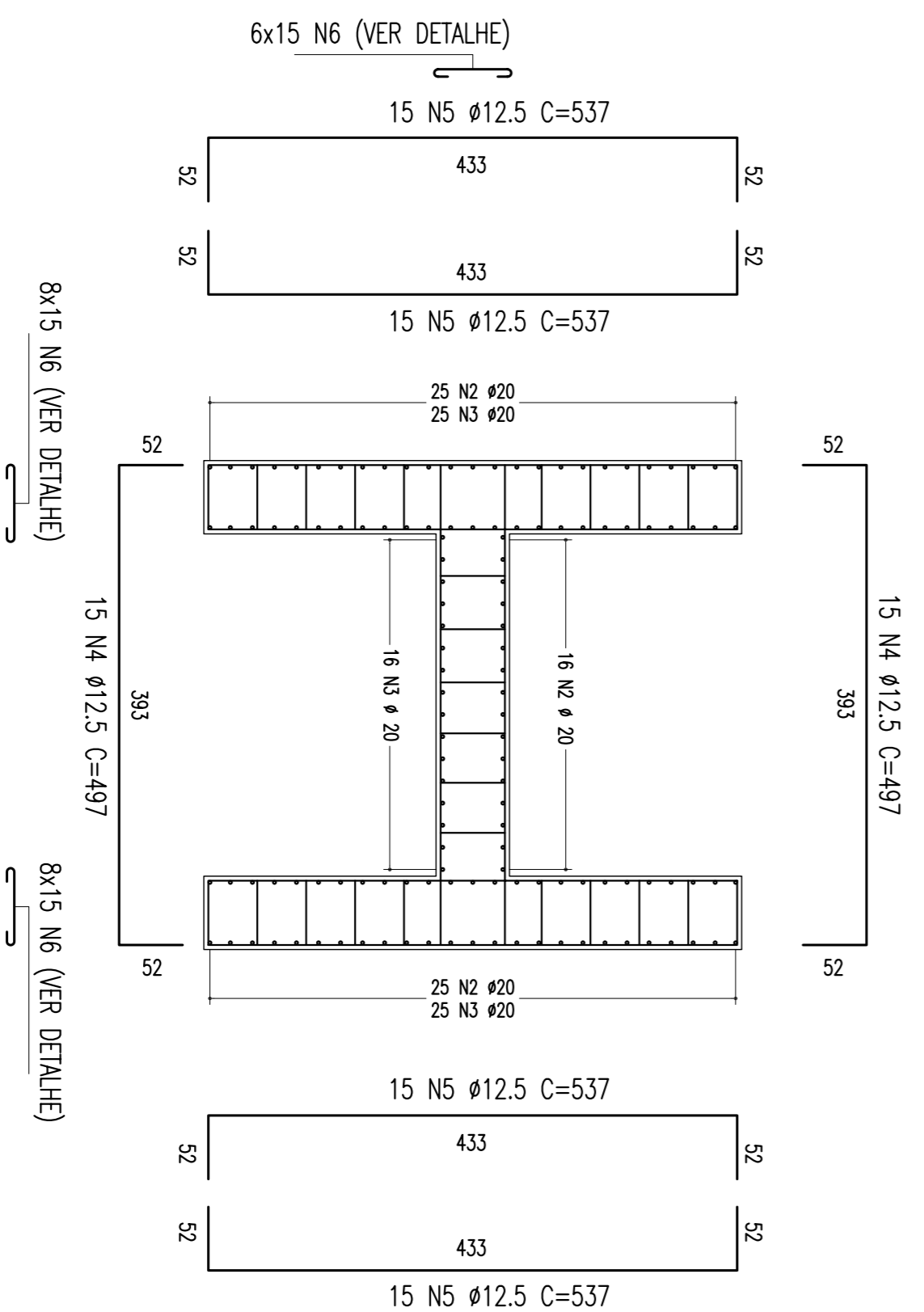
ARMAÇÃO DA SAPATA-840/800: (P06)

ESCALA = 1:100 (FERREÇA EM SUPERIOR)



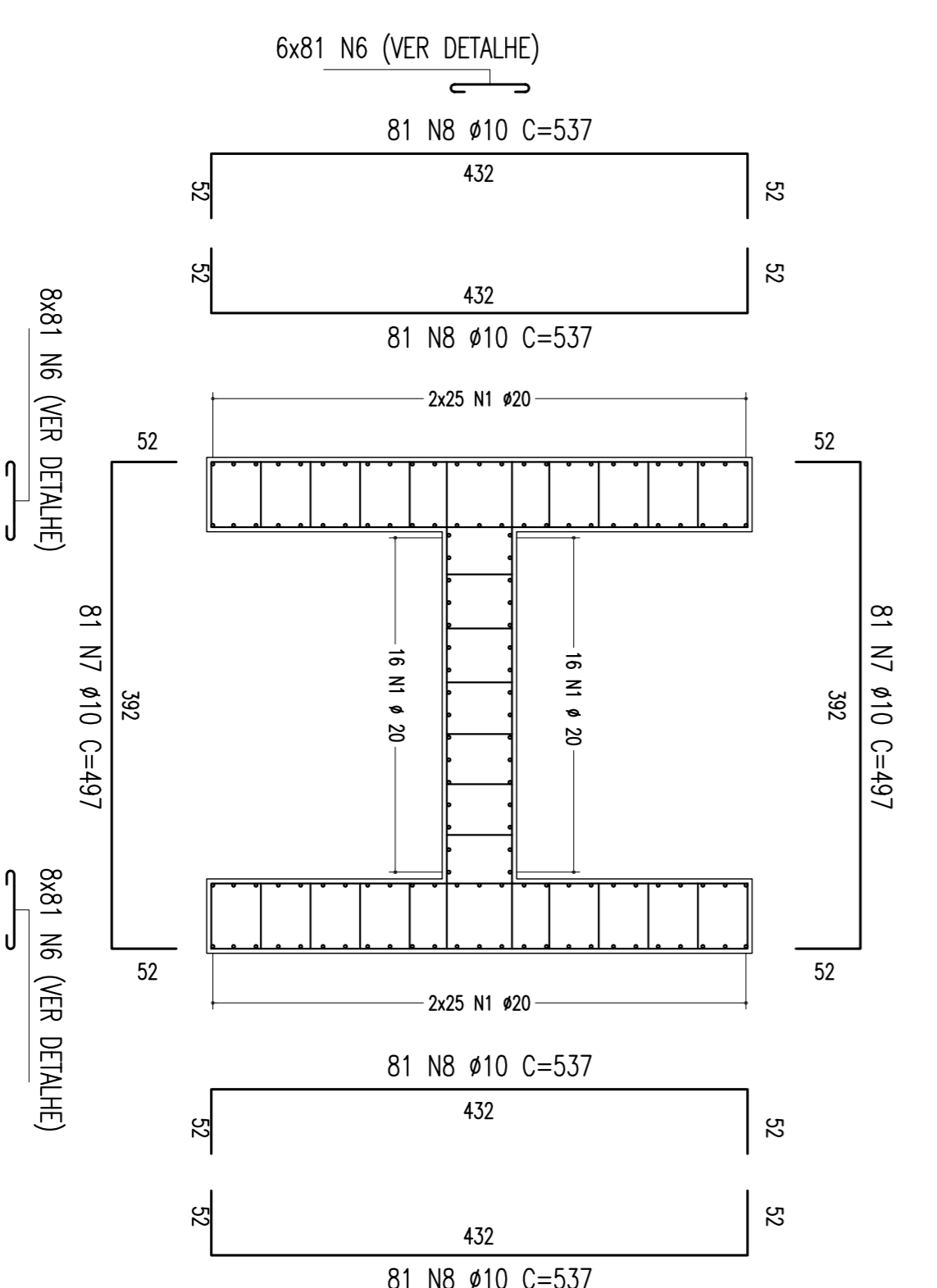
SEÇÃO 2-2

ESCALA = 1:50



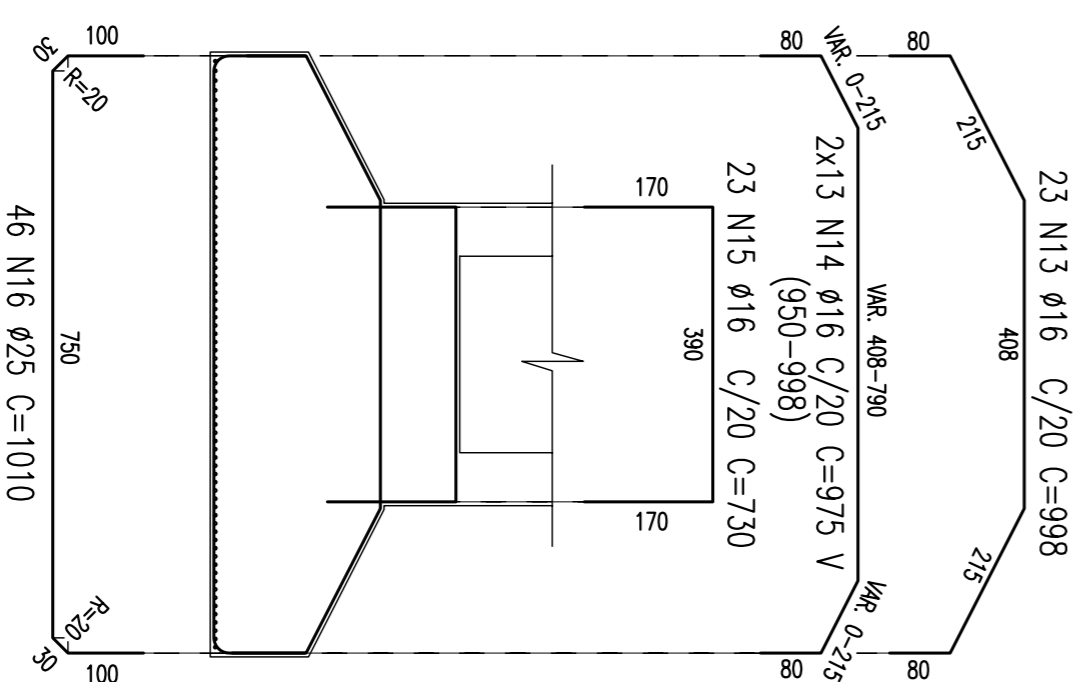
SEÇÃO 1-1

ESCALA = 1:50



SEÇÃO 1-1

ESCALA = 1:100



SEÇÃO 2-2

ESCALA = 1:100

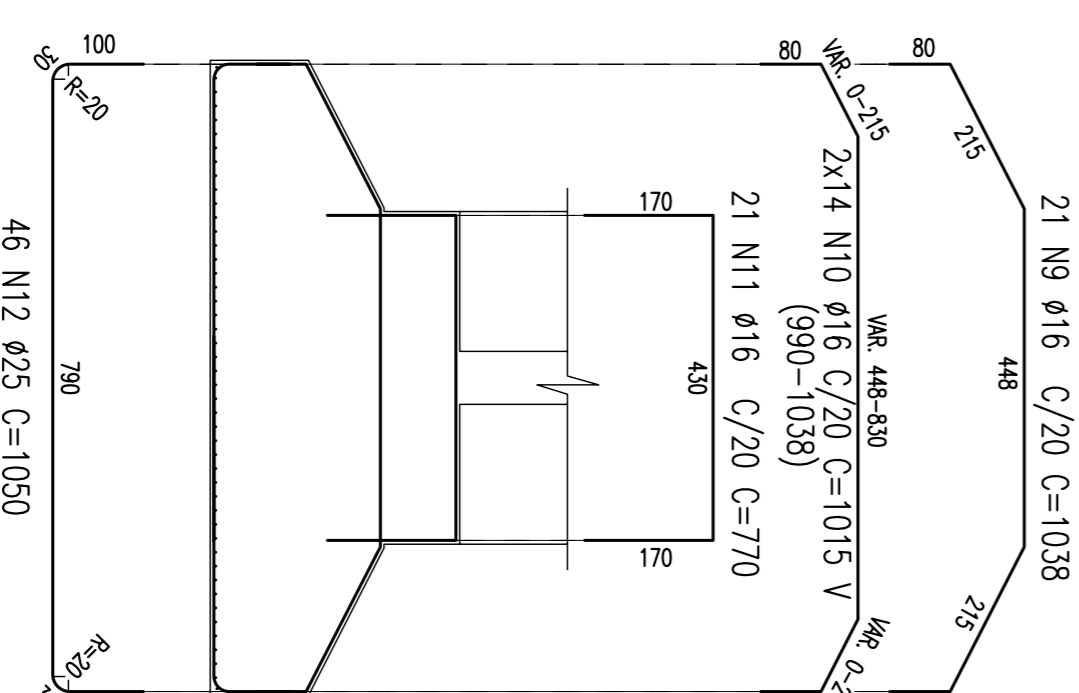


TABELA DE FERROS				
TIPO	POS.	BIT. (mm)	Quant.	COMP. (cm)
			C.Uni.	C.Tot.
ARMAÇÃO DO PILAR P06 - ELEVAÇÕES				
CA-50	1	20	132	1200
CA-50	3	20	66	74910
CA-50	20	20	66	1070
CA-50	66	20	66	70620
DETALHE DO AÇOUGUEIRO				
CA-50	6	10	1344	81
SEÇÕES 1-1/2-2 - PILARES				
CA-50	4	12.5	30	497
CA-50	5	12.5	60	537
CA-50	162	10	497	80514
CA-50	324	10	537	173988
ARMAÇÃO DA SAPATA 800/840				
CA-50	9	16	21	1038
CA-50	10	16	21	23420
CA-50	10	16	21	16170
CA-50	10	16	21	43300
CA-50	10	16	21	1038
CA-50	10	16	21	23420
CA-50	10	16	21	16170
CA-50	10	16	21	43300
CA-50	10	16	21	1038
CA-50	10	16	21	23420
CA-50	10	16	21	16170
CA-50	10	16	21	43300
CA-50	10	16	21	1038
CA-50	10	16	21	23420
CA-50	10	16	21	16170
CA-50	10	16	21	43300
CA-50	10	16	21	1038
CA-50	10	16	21	23420
CA-50	10	16	21	16170
CA-50	10	16	21	43300
CA-50	10	16	21	1038
CA-50	10	16	21	23420
CA-50	10	16	21	16170
CA-50	10	16	21	43300
CA-50	10	16	21	1038
CA-50	10	16	21	23420
CA-50	10	16	21	16170
CA-50	10	16	21	43300
CA-50	10	16	21	1038
CA-50	10	16	21	23420
CA-50	10	16	21	16170
CA-50	10	16	21	43300
CA-50	10	16	21	1038
CA-50	10	16	21	23420
CA-50	10	16	21	16170
CA-50	10	16	21	43300
CA-50	10	16	21	1038
CA-50	10	16	21	23420
CA-50	10	16	21	16170
CA-50	10	16	21	43300
CA-50	10	16	21	1038
CA-50	10	16	21	23420
CA-50	10	16	21	16170
CA-50	10	16	21	43300
CA-50	10	16	21	1038
CA-50	10	16	21	23420
CA-50	10	16	21	16170
CA-50	10	16	21	43300
CA-50	10	16	21	1038
CA-50	10	16	21	23420
CA-50	10	16	21	16170
CA-50	10	16	21	43300
CA-50	10	16	21	1038
CA-50	10	16	21	23420
CA-50	10	16	21	16170
CA-50	10	16	21	43300
CA-50	10	16	21	1038
CA-50	10	16	21	23420
CA-50	10	16	21	16170
CA-50	10	16	21	43300
CA-50	10	16	21	1038
CA-50	10	16	21	23420
CA-50	10	16	21	16170
CA-50	10	16	21	43300
CA-50	10	16	21	1038
CA-50	10	16	21	23420
CA-50	10	16	21	16170
CA-50	10	16	21	43300
CA-50	10	16	21	1038
CA-50	10	16	21	23420
CA-50	10	16	21	16170
CA-50	10	16	21	43300
CA-50	10	16	21	1038
CA-50	10	16	21	23420
CA-50	10	16	21	16170
CA-50	10	16	21	43300
CA-50	10	16	21	1038
CA-50	10	16	21	23420
CA-50	10	16	21	16170
CA-50	10	16	21	43300
CA-50	10	16	21	1038
CA-50	10	16	21	23420
CA-50	10	16	21	16170
CA-50	10	16	21	43300
CA-50	10	16	21	1038
CA-50	10	16	21	23420
CA-50	10	16	21	16170
CA-50	10	16	21	43300
CA-50	10	16	21	1038
CA-50	10	16	21	23420
CA-50	10	16	21	16170
CA-50	10	16	21	43300
CA-50	10	16	21	1038
CA-50	10	16	21	23420
CA-50	10	16	21	16170
CA-50	10	16	21	43300
CA-50	10	16	21	1038
CA-50	10	16	21	23420
CA-50	10	16	21	16170
CA-50	10	16	21	43300
CA-50	10	16	21	1038
CA-50	10	16	21	23420
CA-50	10	16	21	16170
CA-50	10	16	21	43300
CA-50	10	16	21	1038
CA-50	10	16	21	23420
CA-50	10	16	21	16170
CA-50	10	16	21	43300
CA-50	10	16	21	1038
CA-50	10	16	21	23420
CA-50	10	16	21	16170
CA-50	10	16	21	43300
CA-50	10	16	21	1038
CA-50	10	16	21	23420
CA-50	10	16	21	16170
CA-50	10	16	21	43300
CA-50	10	16	21	1038
CA-50	10	16	21	23420
CA-50	10	16	21	16170
CA-50	10	16	21	43300
CA-50	10	16	21	1038
CA-50	10	16	21	23420
CA-50	10	16	21	16170
CA-50	10	16	21	43300
CA-50	10	16	21	1038
CA-50	10	16	21	23420
CA-50	10	16	21	16170
CA-50	10	16	21	43300
CA-50	10	16	21	1038
CA-50	10	16	21	23420
CA-50	10	16	21	16170
CA-50	10	16	21	43300
CA-50	10	16	21	1038
CA-50	10	16	21	23420
CA-50	10	16	21	16170
CA-50	10	16	21	43300
CA-50	10	16	21	1038
CA-50	10	16	21	23420
CA-50	10	16	21	16170
CA-50	10	16	21	43300
CA-50	10	16	21	1038
CA-50	10	16	21	23420
CA-50	10	16	21	16170
CA-50	10	16	21	43300
CA-50	10	16	21	1038
CA-50	10	16	21	23420
CA-50	10	16	21	16170
CA-50	10	16	21	43300
CA-50	10	16	21	1038
CA-50	10	16	21	23420
CA-50	10	16	21	16170
CA-50	10	16	21	43300
CA-50	10	16	21	1038
CA-50	10	16	21	23420
CA-50	10	16	21	16170
CA-50	10	16	21	43300
CA-50	10	16	21	1038
CA-50	10	16	21	23420
CA-50	10	16	21	16170
CA-50	10	16	21	43300
CA-50	10	16	21	1038
CA-50	10	16	21	23420
CA-50	10	16	21	16170
CA-50	10	16	21	43300
CA-50	10	16	21	1038
CA-50	10	16	21	23420
CA-50	10	16	21	16170
CA-50	10	16	21	43300
CA-50	10	16	21	1038
CA-50	10	16	21	23420
CA-50	10	16	21	16170
CA-50	10	16	21	43300
CA-50	10	16	21	1038
CA-50	10	16	21	23420
CA-50	10	16	21	16170
CA-50	10	16	21	43300
CA-50	10	16	21	1038
CA-50	10	16	21	23420
CA-50	10	16	21	16170
CA-50	10	16	21	43300
CA-50	10	16	21	