

ENCONTRO 01

ENCONTRO 02

ARMAÇÃO DOS PILARES PA E PB

ARMAÇÃO DOS PILARES PC E PD

ARMAÇÃO DOS PILARES PA E PB

ARMAÇÃO DOS PILARES PC E PD

ELEVÇÃO (2x)

ELEVÇÃO (2x)

SAPATA PC E PD(1x)

ELEVÇÃO (2x)

ELEVÇÃO (2x)

SAPATA PC E PD(1x)

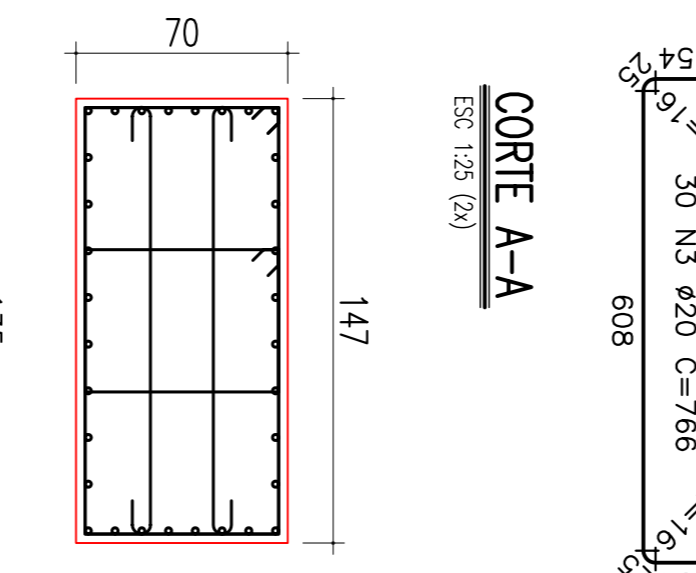
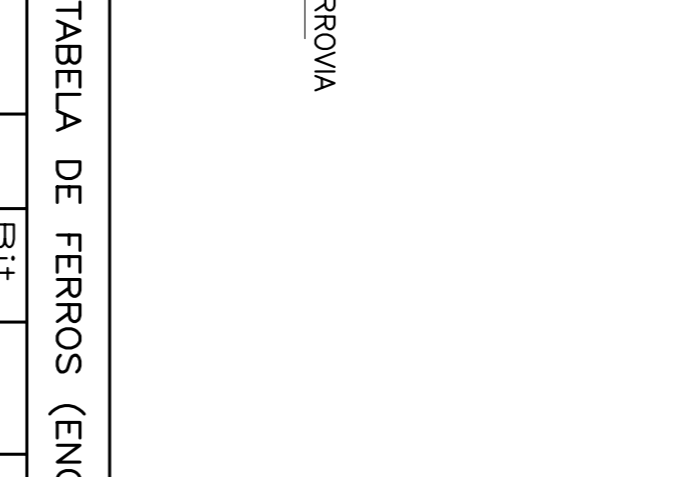
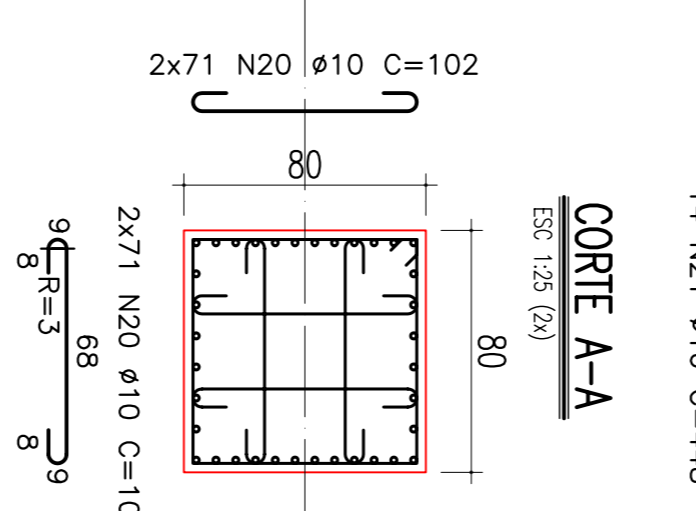
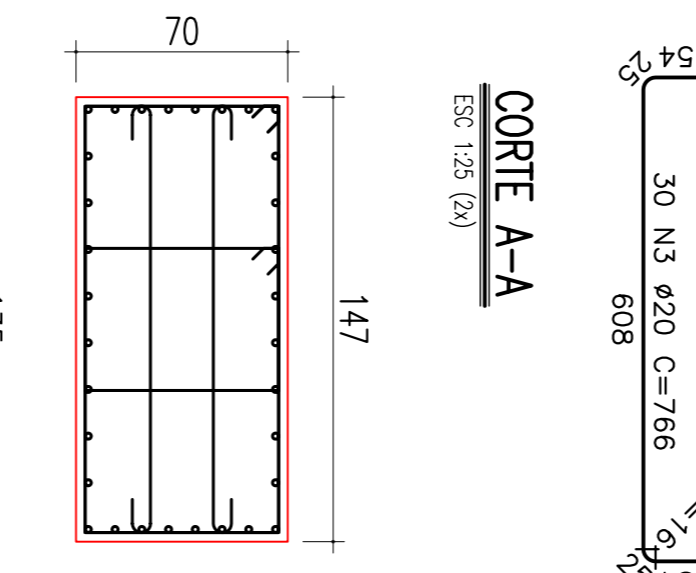
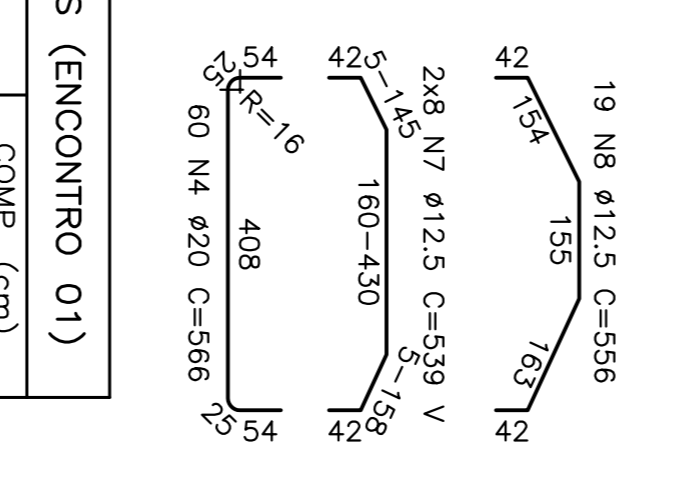
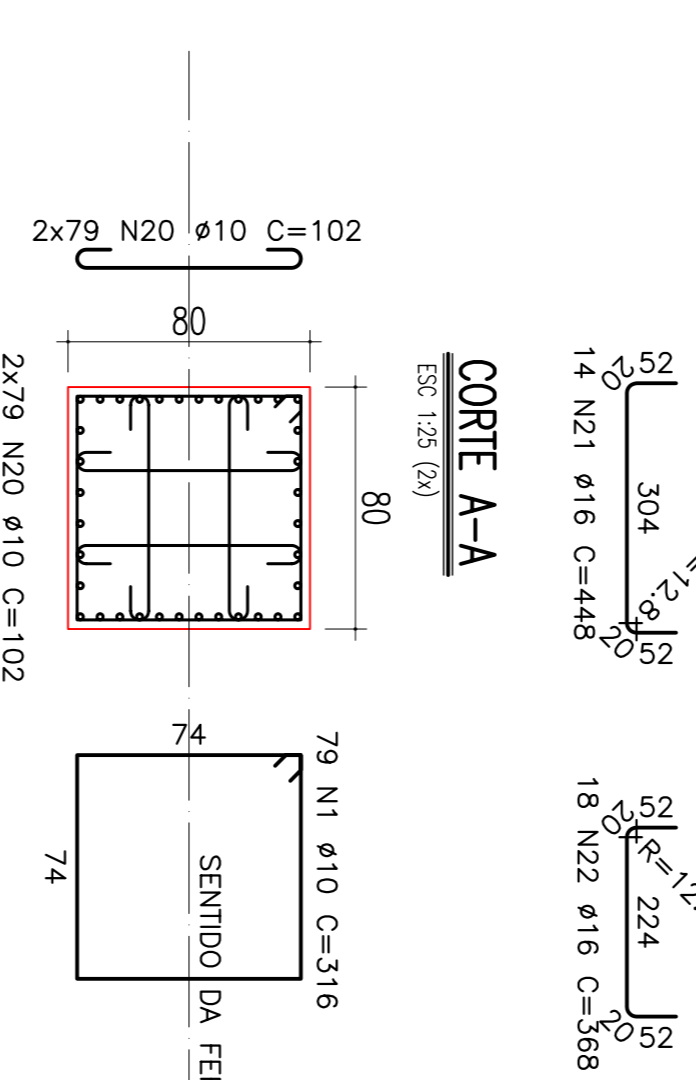
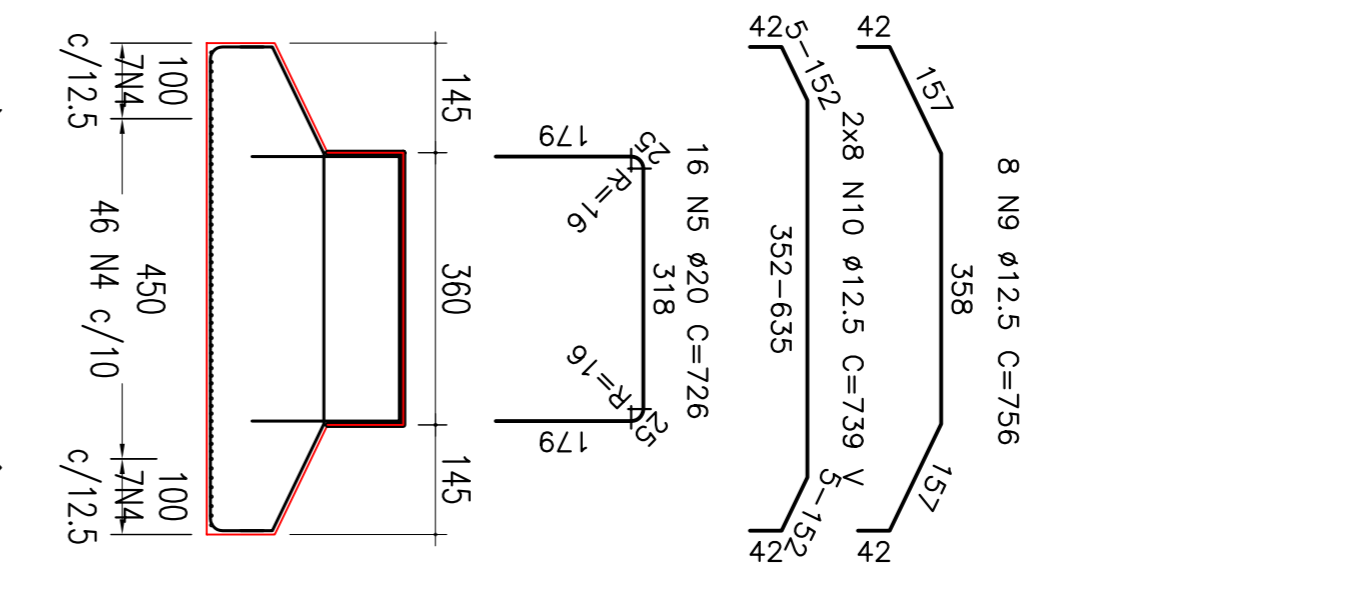
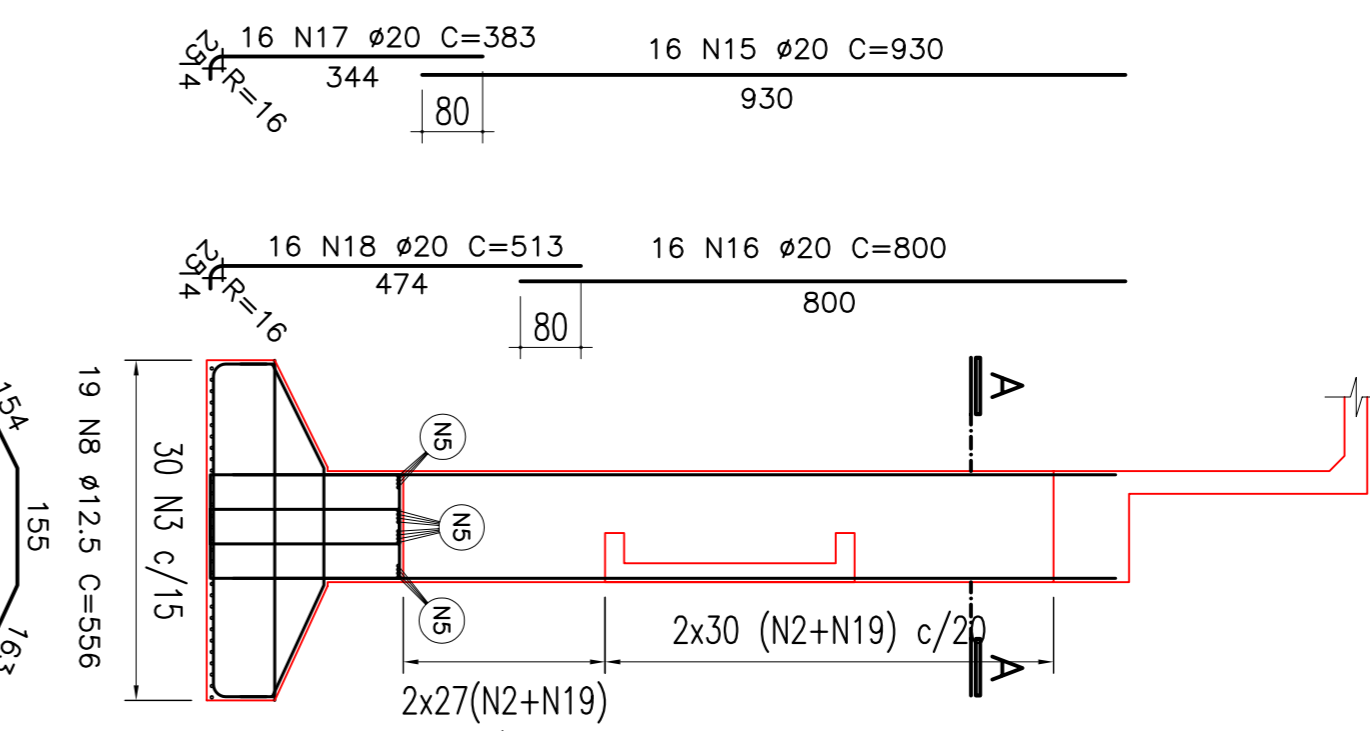
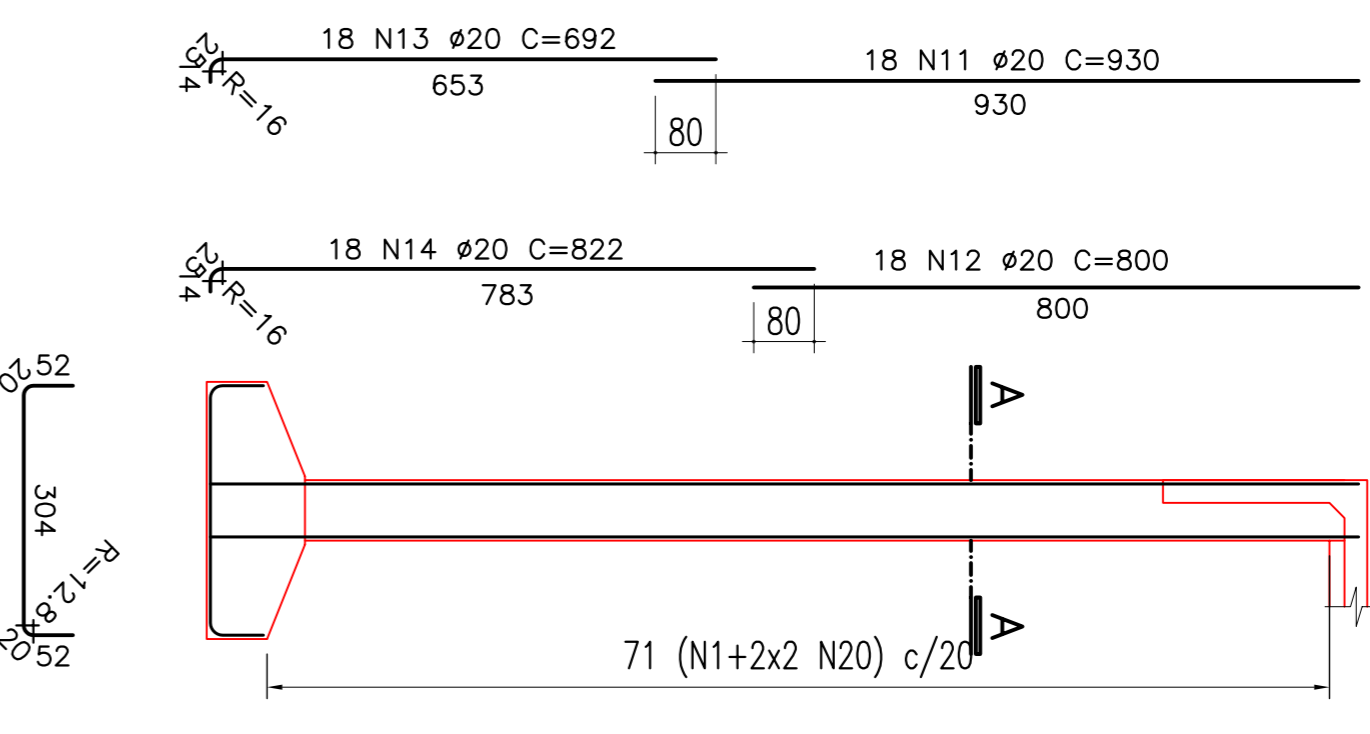
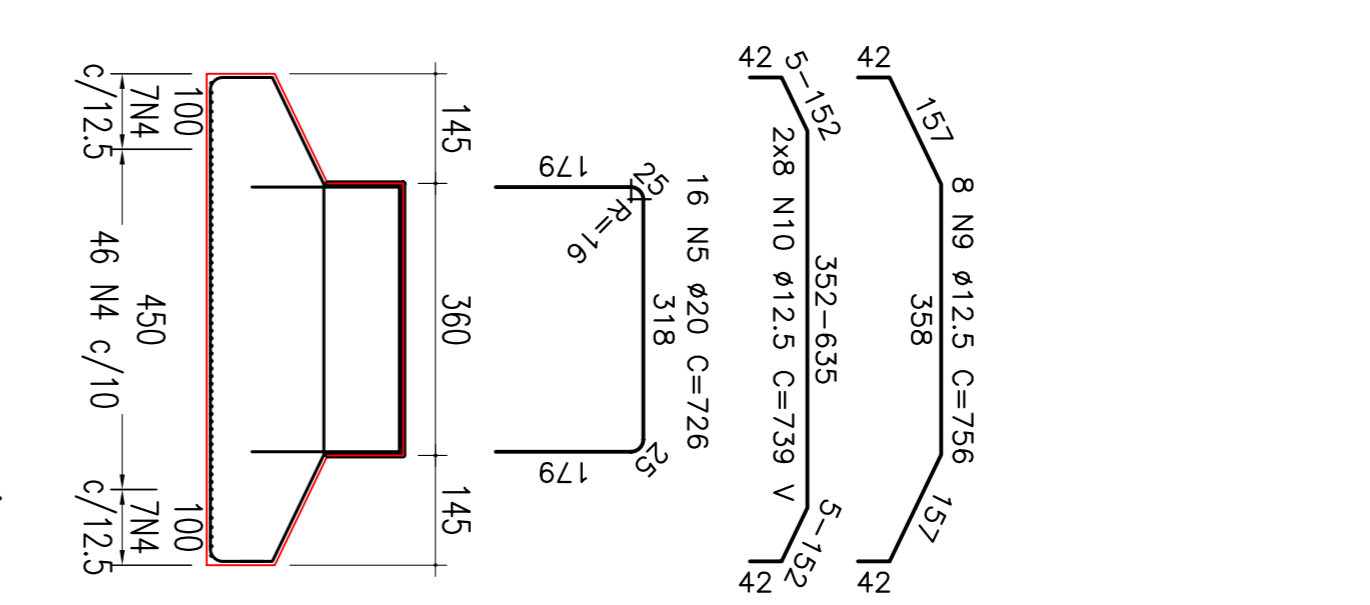
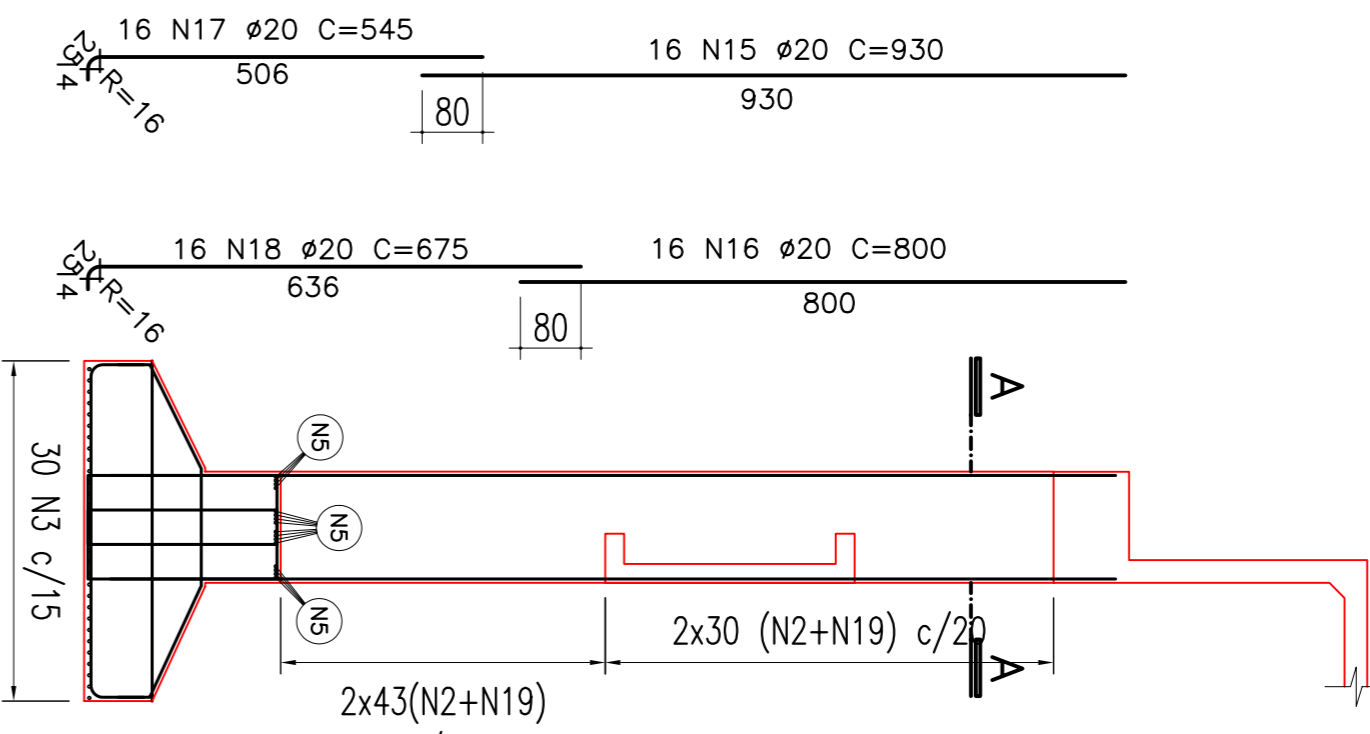
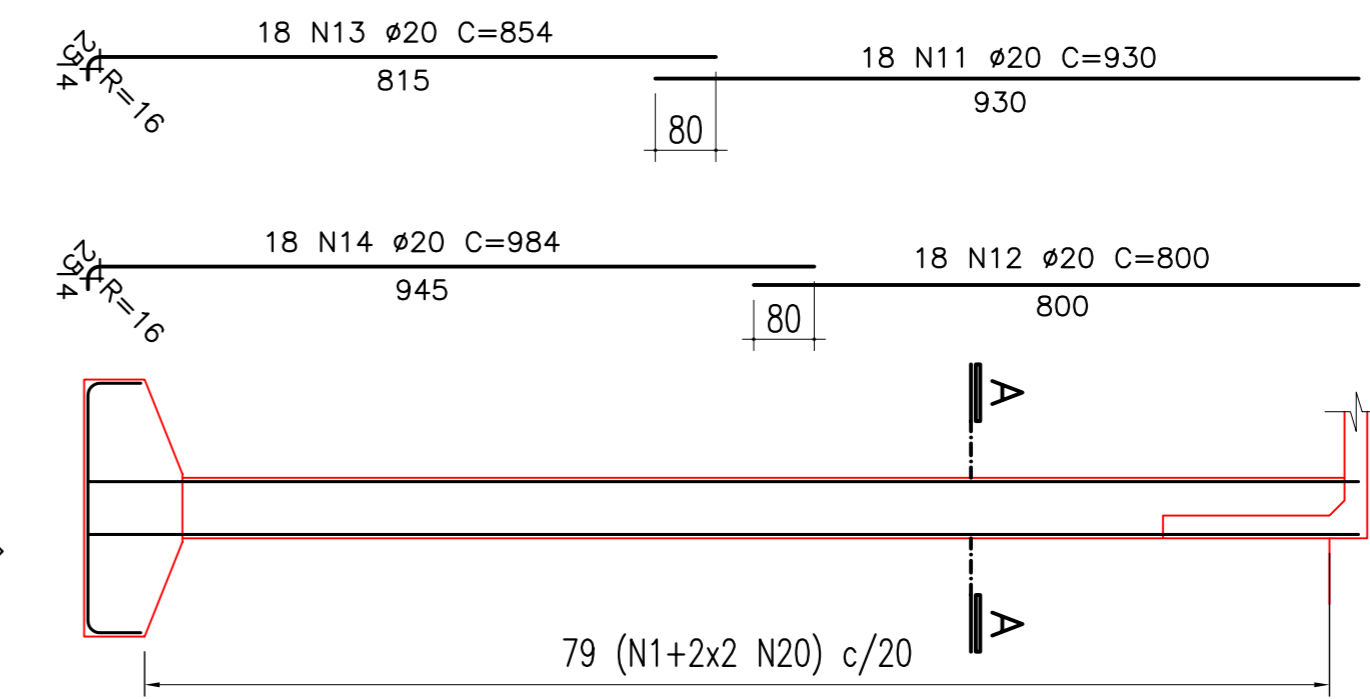


TABELA DE FERROS (ENCONTRO 01)				
Tipo	Bit.	Quant.	COMP. (cm)	C.Tot.
ARMAÇÃO DOS PILARES PA E PB (2x)				
CA-50A	1	10	16	49228
CA-50A	1	10	10	23200
CA-50A	1	10	10	23200
CA-50A	1	10	10	23200
CA-50A	1	10	10	23200
CA-50A	1	10	10	23200
CA-50A	1	10	10	23200
CA-50A	1	10	10	23200
CA-50A	1	10	10	23200
CA-50A	1	10	10	23200
CA-50A	1	10	10	23200
ARMAÇÃO DOS PILARES PC E PD (2x)				
CA-50A	1	10	16	49228
CA-50A	1	10	10	23200
CA-50A	1	10	10	23200
CA-50A	1	10	10	23200
CA-50A	1	10	10	23200
CA-50A	1	10	10	23200
CA-50A	1	10	10	23200
CA-50A	1	10	10	23200
CA-50A	1	10	10	23200
CA-50A	1	10	10	23200
SAPATA PC E PD(1x)				
CA-50A	1	30	76	22980
CA-50A	1	30	76	22980
CA-50A	1	30	76	22980
CA-50A	1	30	76	22980
CA-50A	1	30	76	22980
CA-50A	1	30	76	22980
CA-50A	1	30	76	22980
CA-50A	1	30	76	22980
CA-50A	1	30	76	22980
CA-50A	1	30	76	22980
RESUMO DO AÇO				
CA-50A	10	2416.52	1518	
CA-50A	12.5	370.6	364	
CA-50A	16	467.32	734	
CA-50A	20	2914.04	7206	
PESO TOTAL				9821

TABELA DE FERROS (ENCONTRO 02)				
Tipo	Bit.	Quant.	COMP. (cm)	C.Tot.
ARMAÇÃO DOS PILARES PA E PB (2x)				
CA-50A	1	10	16	44872
CA-50A	1	10	10	23200
CA-50A	1	10	10	23200
CA-50A	1	10	10	23200
CA-50A	1	10	10	23200
CA-50A	1	10	10	23200
CA-50A	1	10	10	23200
CA-50A	1	10	10	23200
CA-50A	1	10	10	23200
CA-50A	1	10	10	23200
CA-50A	1	10	10	23200
ARMAÇÃO DOS PILARES PC E PD (2x)				
CA-50A	1	10	16	44872
CA-50A	1	10	10	23200
CA-50A	1	10	10	23200
CA-50A	1	10	10	23200
CA-50A	1	10	10	23200
CA-50A	1	10	10	23200
CA-50A	1	10	10	23200
CA-50A	1	10	10	23200
CA-50A	1	10	10	23200
CA-50A	1	10	10	23200
SAPATA PC E PD(1x)				
CA-50A	1	30	76	22980
CA-50A	1	30	76	22980
CA-50A	1	30	76	22980
CA-50A	1	30	76	22980
CA-50A	1	30	76	22980
CA-50A	1	30	76	22980
CA-50A	1	30	76	22980
CA-50A	1	30	76	22980
CA-50A	1	30	76	22980
CA-50A	1	30	76	22980
RESUMO DO AÇO				
CA-50A	10	1977.48	1242	
CA-50A	12.5	370.6	364	
CA-50A	16	467.32	734	
CA-50A	20	2693.72	6661	
PESO TOTAL				9000

02	REVISÃO DO PROJETO EXECUTIVO	EMITENTE	VERIFICAÇÃO	APROVAÇÃO	CODIGO	DOCUMENTOS DE REFERENCIA	OBJETO
01	REVISÃO GERAL						
	DISCRIMINAÇÃO						
	REVISÕES						

CONTRATANTE	CONTRATADO	PROJETA	ELABORADO	VERIFICADO	RESPOSTA
COMPANHIA FERROVIÁRIA DO NORDESTE	CONSTRUTORA	PROJ. CIVIL	ELABORADO	VERIFICADO	RESPOSTA

CONVENIÊNCIAS	SIGLA	PROJETO	ELABORADO	VERIFICADO	RESPOSTA

EMPRESA	PROJETO	ELABORADO	VERIFICADO	RESPOSTA
COMPANHIA FERROVIÁRIA DO NORDESTE	NOVA TRANSNORDESTINA	ELABORADO	VERIFICADO	RESPOSTA

PROJETO	ELABORADO	VERIFICADO	RESPOSTA
ARMAÇÃO DOS ENCONTROS 01 E 02	ELABORADO	VERIFICADO	RESPOSTA