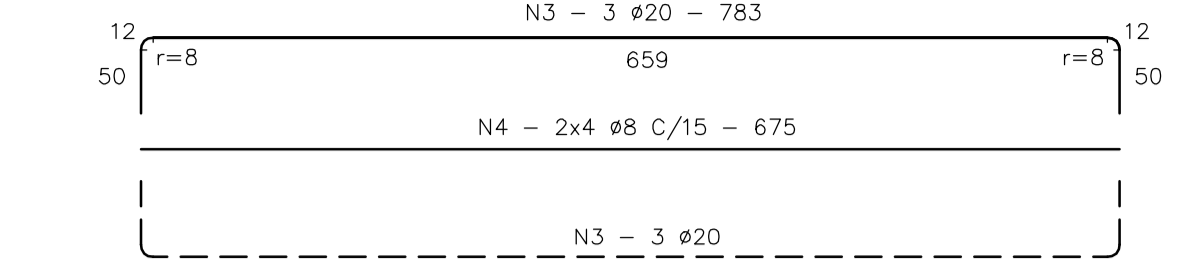
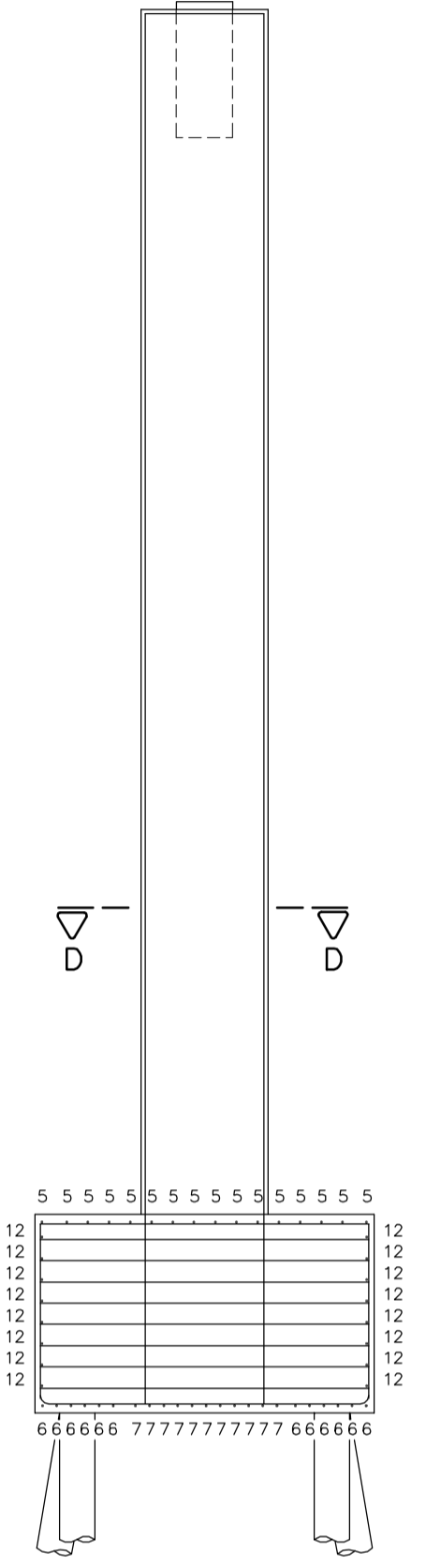


CORTE EE
ESC. 1:50



CORTE FF
ESC. 1:50



**TOPO DO PILAR
LOCAÇÃO DO NEOPRENE**
ESC. 1:25

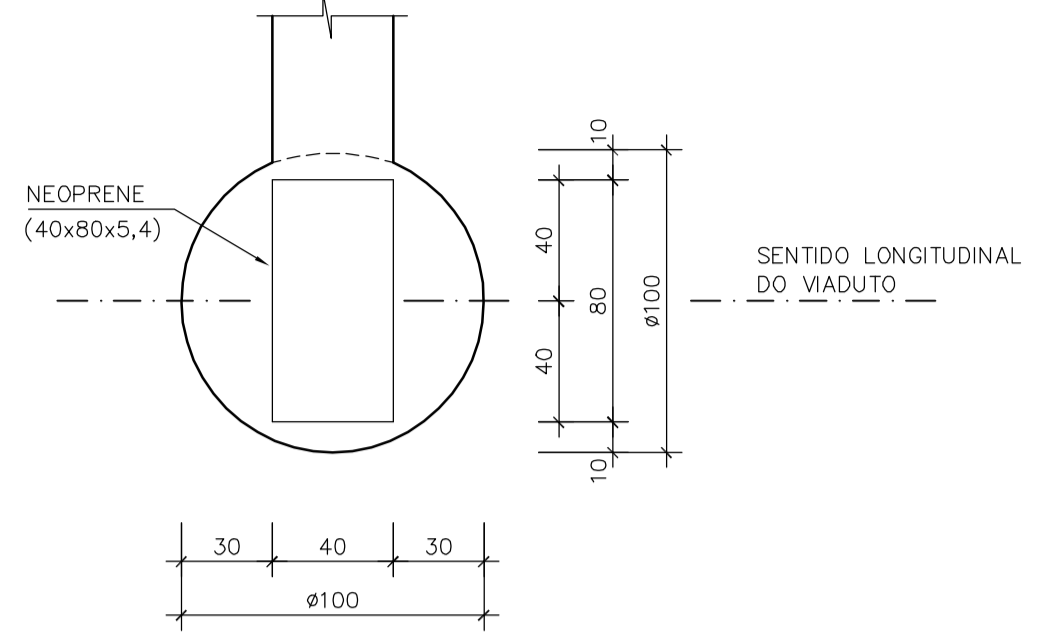
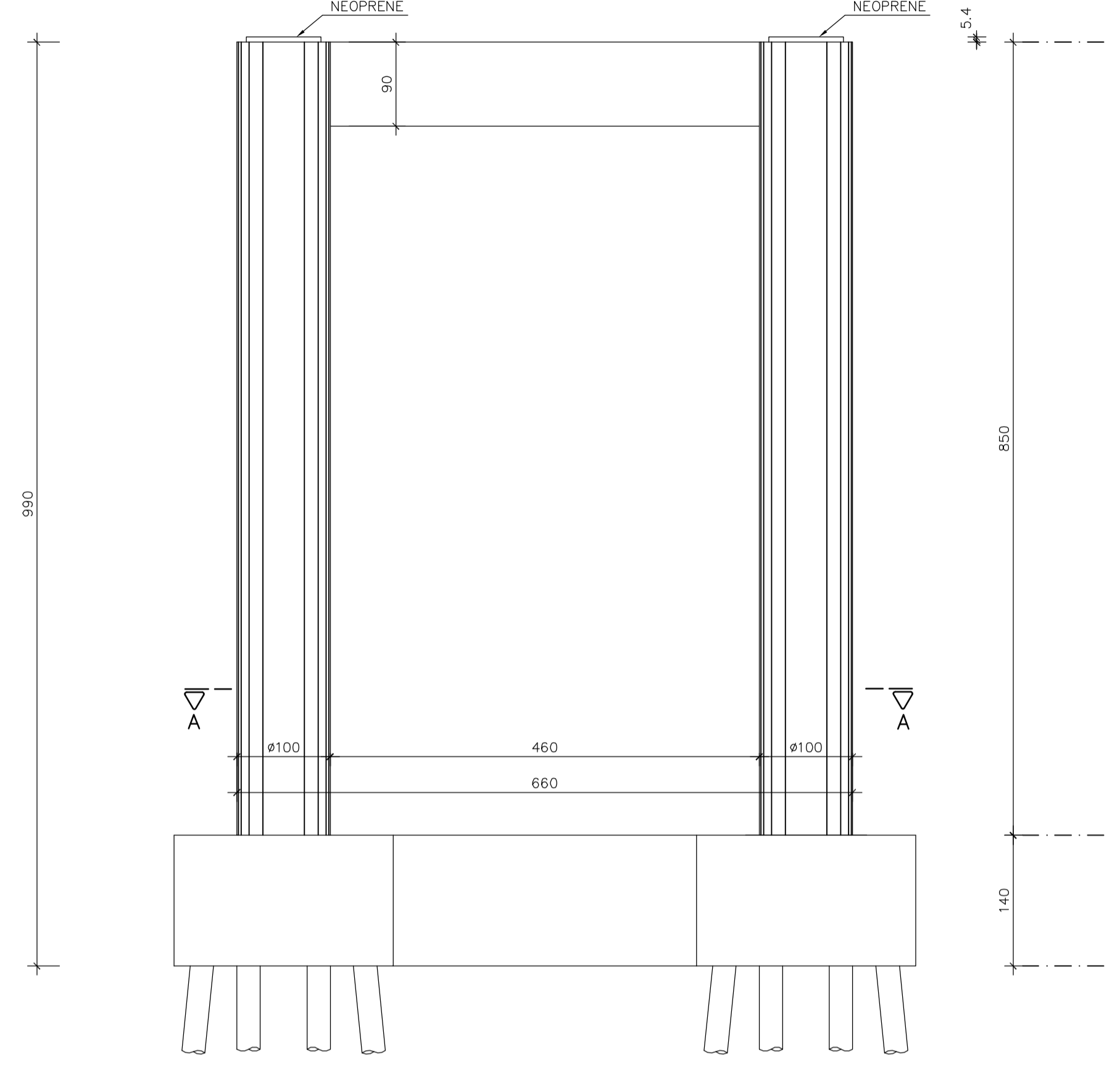


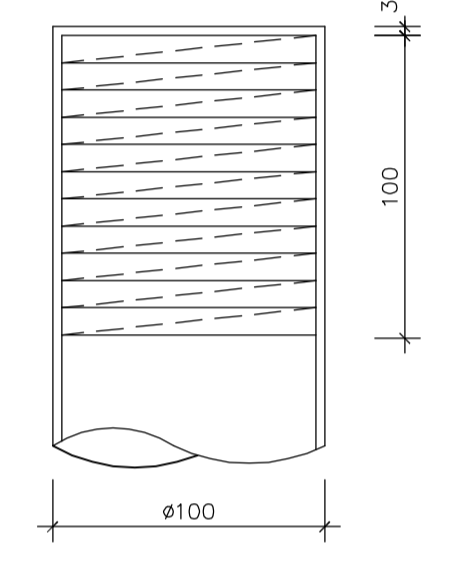
TABELA DE COMPRIMENTOS

N	Ø	Q	COMPRIMENTO (m)	
			UNITÁRIO	TOTAL
AÇO CA - 50				
1	20	80	9,85	788,00
2	10	4	35,42	141,68
3	20	12	7,83	93,96
4	8	16	6,75	108,00
5	10	64	4,12	263,68
6	16	48	3,77	180,96
7	16	48	3,72	178,56
8	16	64	4,12	263,68
9	16	120	3,77	452,40
10	20	12	8,43	101,16
11	8	32	6,75	216,00
12	10	128	2,72	348,16
13	8	64	2,54	162,56
14	8	48	3,32	159,36
15	8	236	3,52	830,72

PILAR P1 e P2
ESC. 1:50



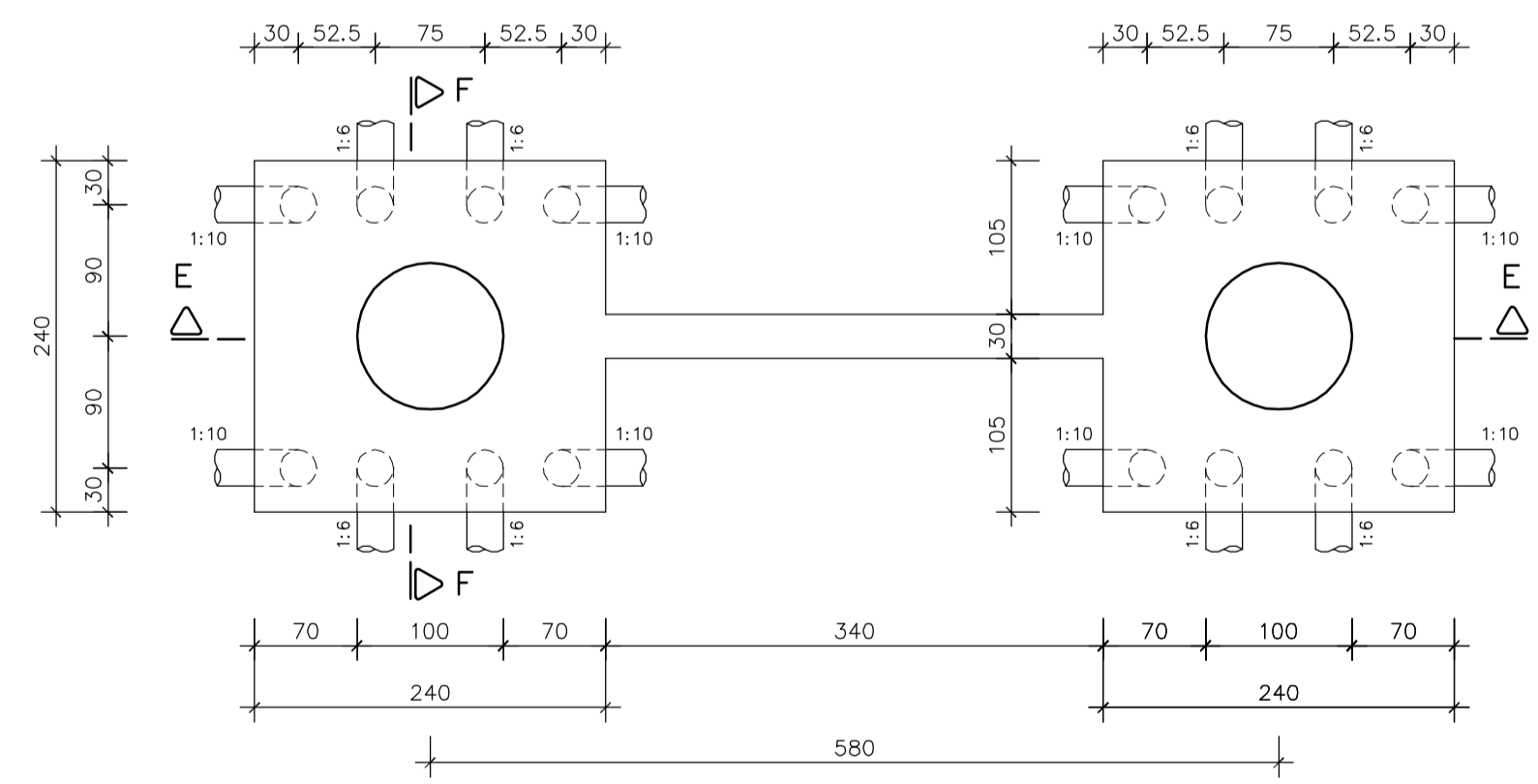
**FRETAGEM NO
TOPO DO PILAR**
ESC. 1:25



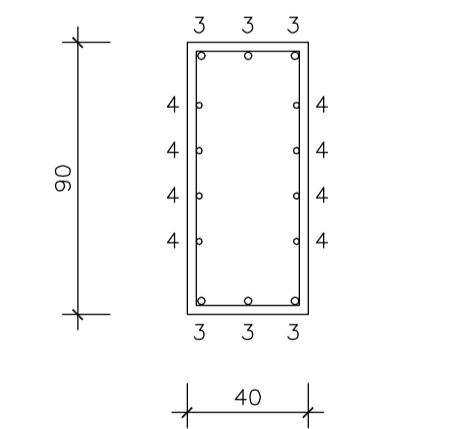
RESUMO DE AÇO

Ø	COMPRIMENTO TOTAL (m)	PESO (kg)	
		UNITÁRIO	TOTAL
AÇO CA - 50			
8	1476,64	0,40	590,65
10	753,52	0,63	474,72
16	1075,60	1,60	1720,96
20	983,12	2,50	2457,80
PESO TOTAL =		5.244,13 kg	

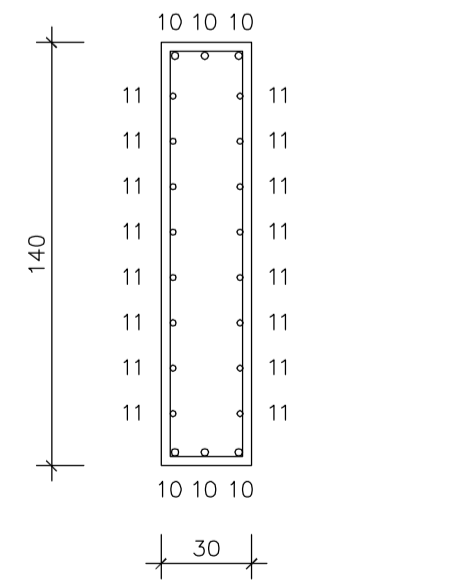
CORTE AA
ESC. 1:50



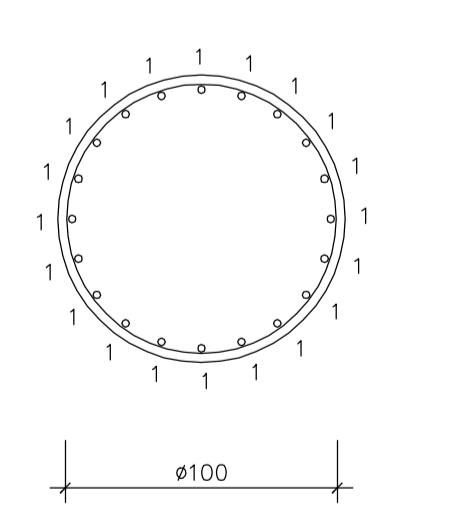
CORTE BB
ESCALA 1:25



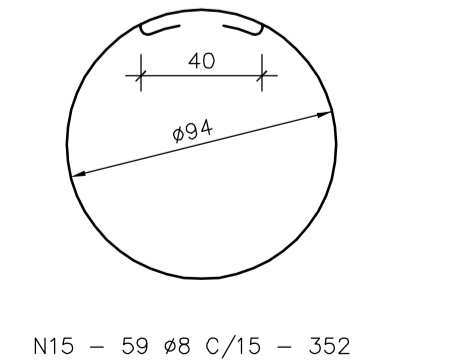
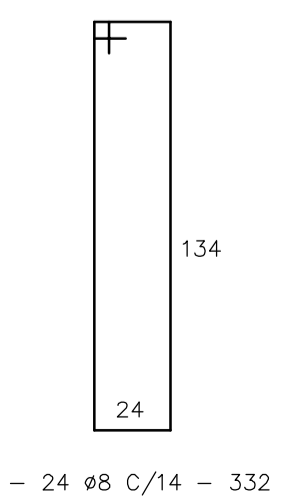
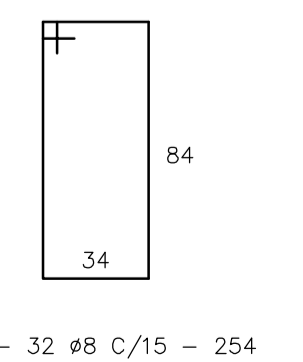
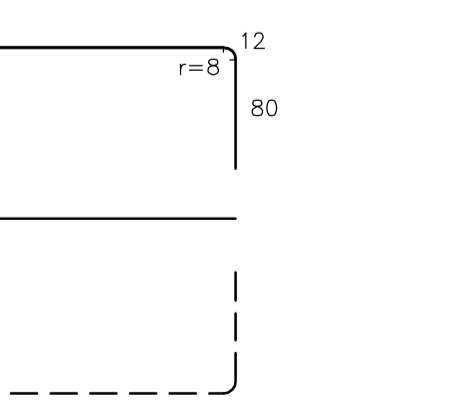
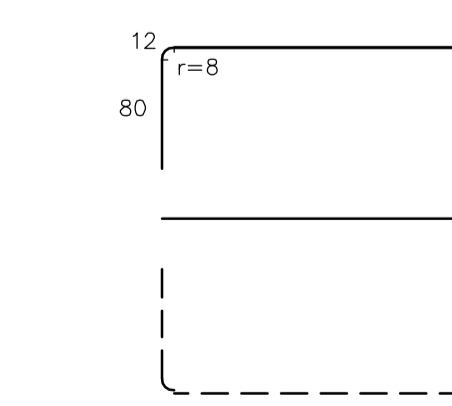
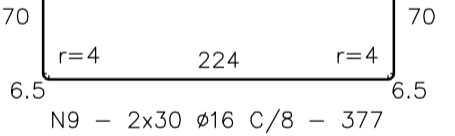
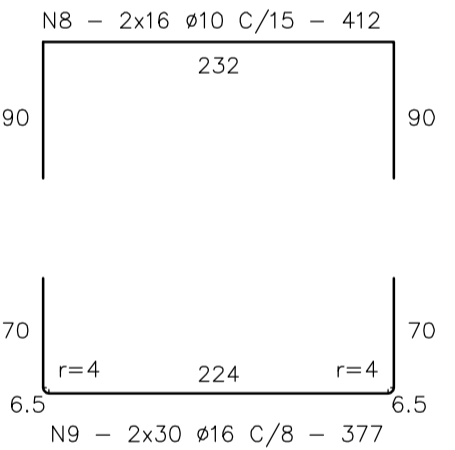
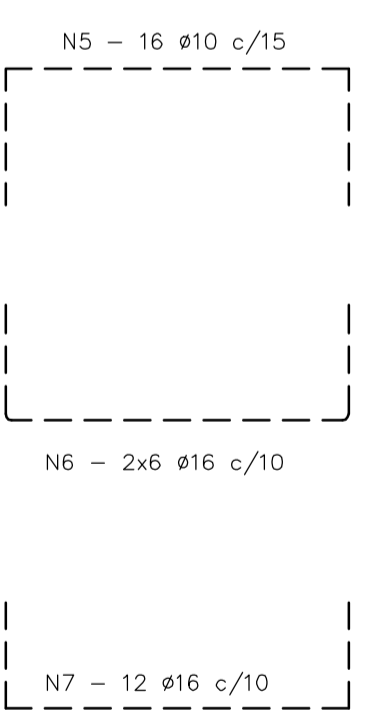
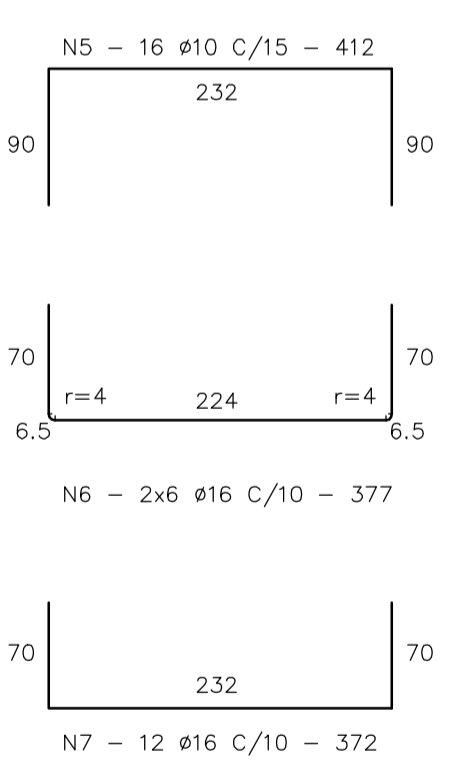
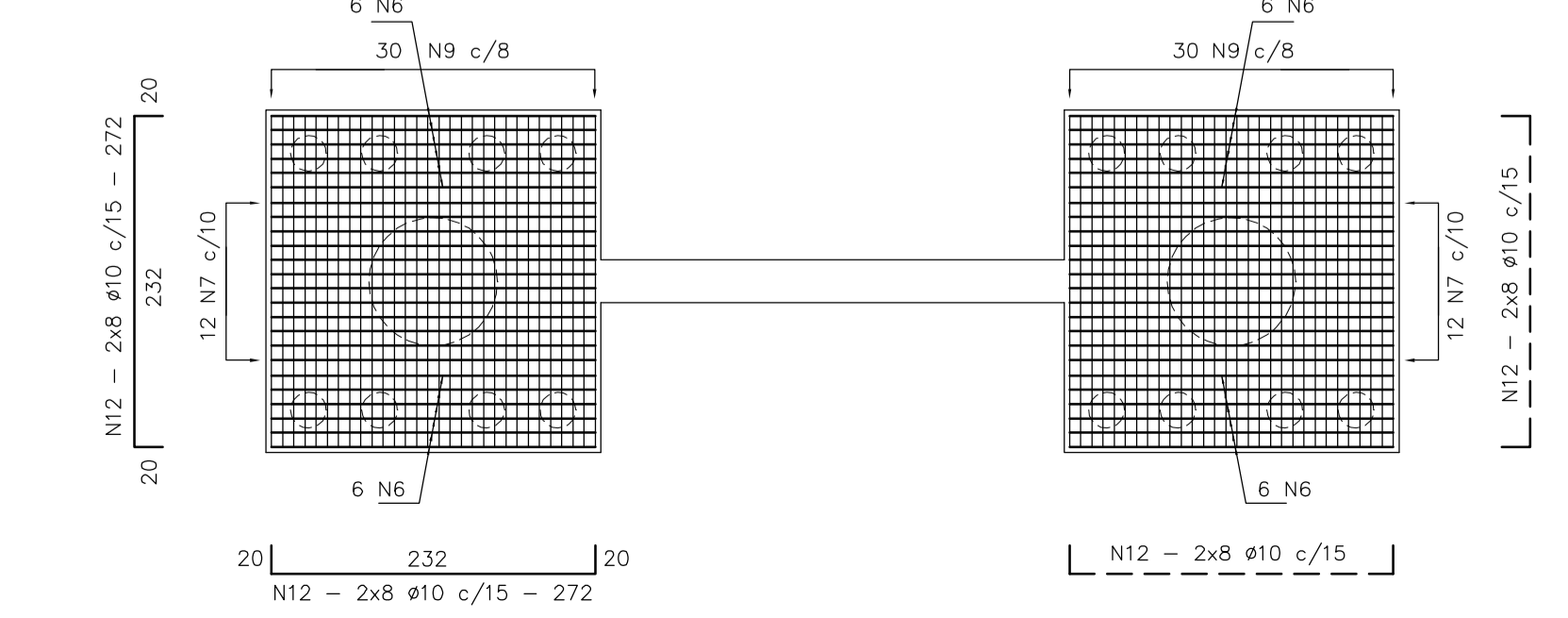
CORTE CC
ESCALA 1:25



CORTE DD
ESC. 1:25



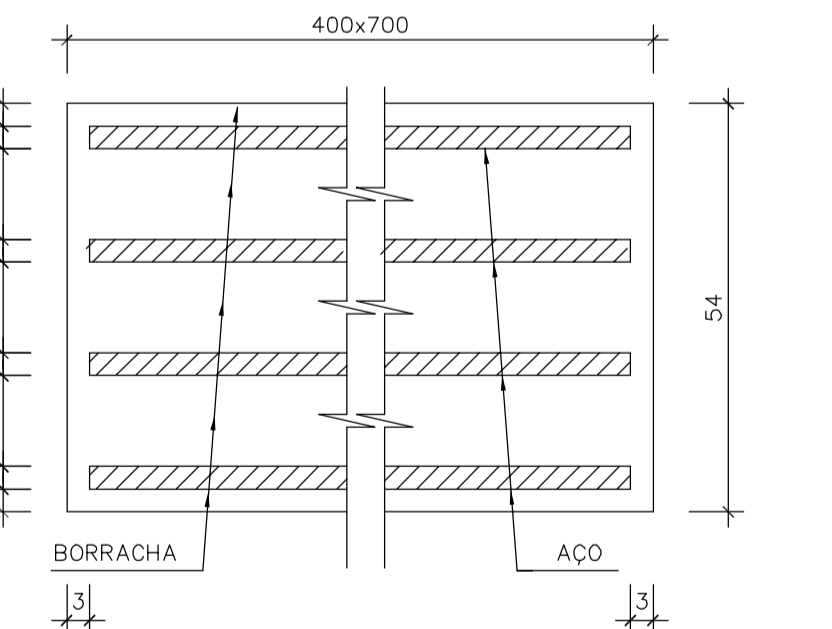
ARMADURA dos BLOCOS
ESC. 1:50



NOTAS:

- AS UNIDADES DE MEDIDA NÃO INDICADAS ESTÃO EM CENTÍMETROS
- CONCRETO fck = 20 MPa

DETALHE DO NEOPRENE
ESC. 1:1 (MEDIDAS EM MILÍMETROS)



Emissão inicial - Minuto do Projeto Executivo		19/10/06	NS	CM
Revisão	Descrição	Data	Aprov.	Aut.
Aprovação	ECOPLAN	Autorização	ECOPLAN	
Elaboração	CEHAB	Revisão	CEHAB	
Eduardo Michelucci	Jorge M. Basler	Referência Ecoplan:		
S.D.U. COMPANHIA ESTADUAL DE HABITAÇÃO E OBRAS		CEHAB		
ESCALAS:		Ferrovia: Transnordestina		
INDICADAS		Trecho : Parnamirim - Araripina (112,6 km)		
Lote : 3		Lote : 3		
DATA:	PONTE FERROVIÁRIA SOBRE A PE-555		FOLHA/TOTAL	
OUT/06	FORMAS E ARMADURAS DOS PILARES		03-06	