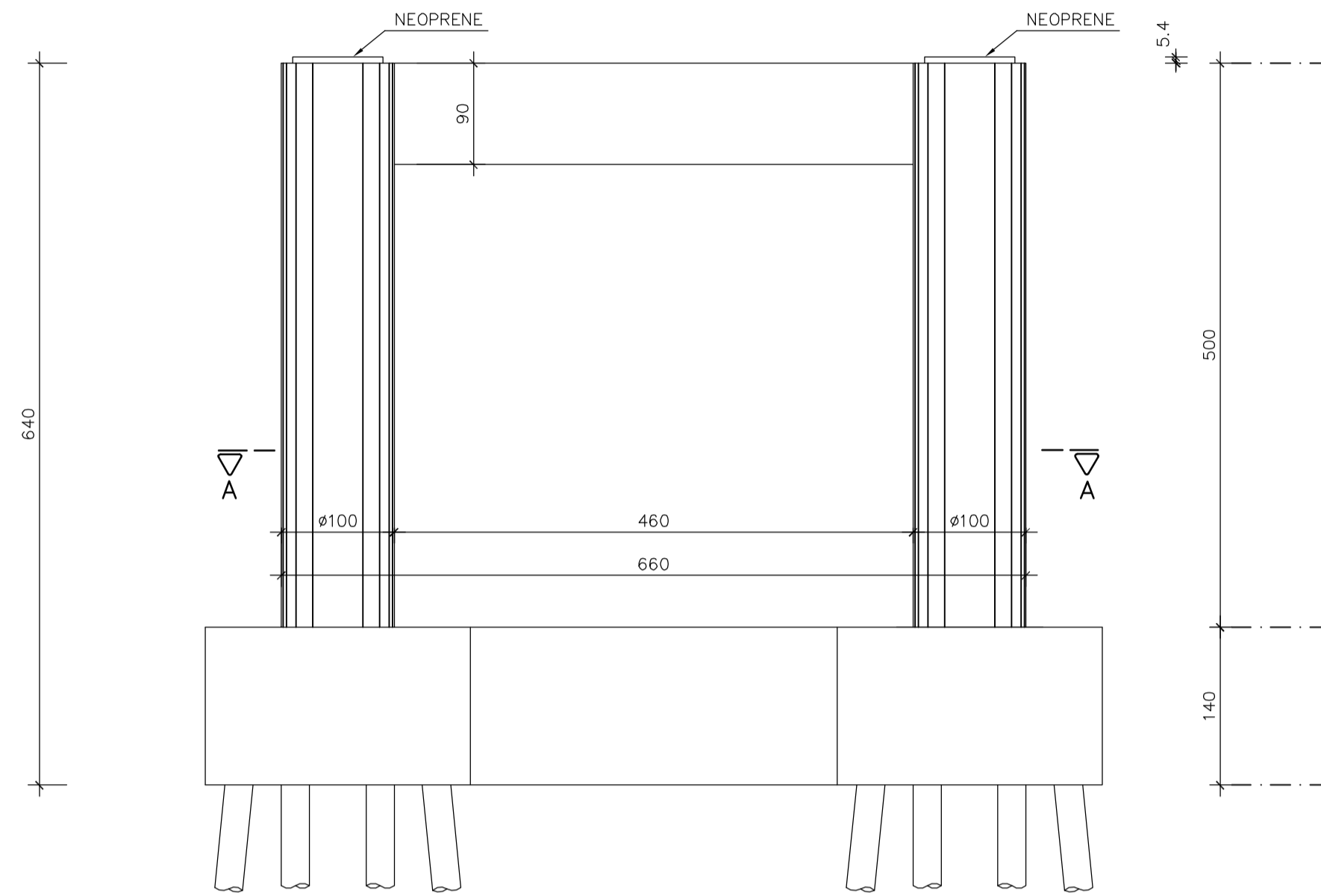
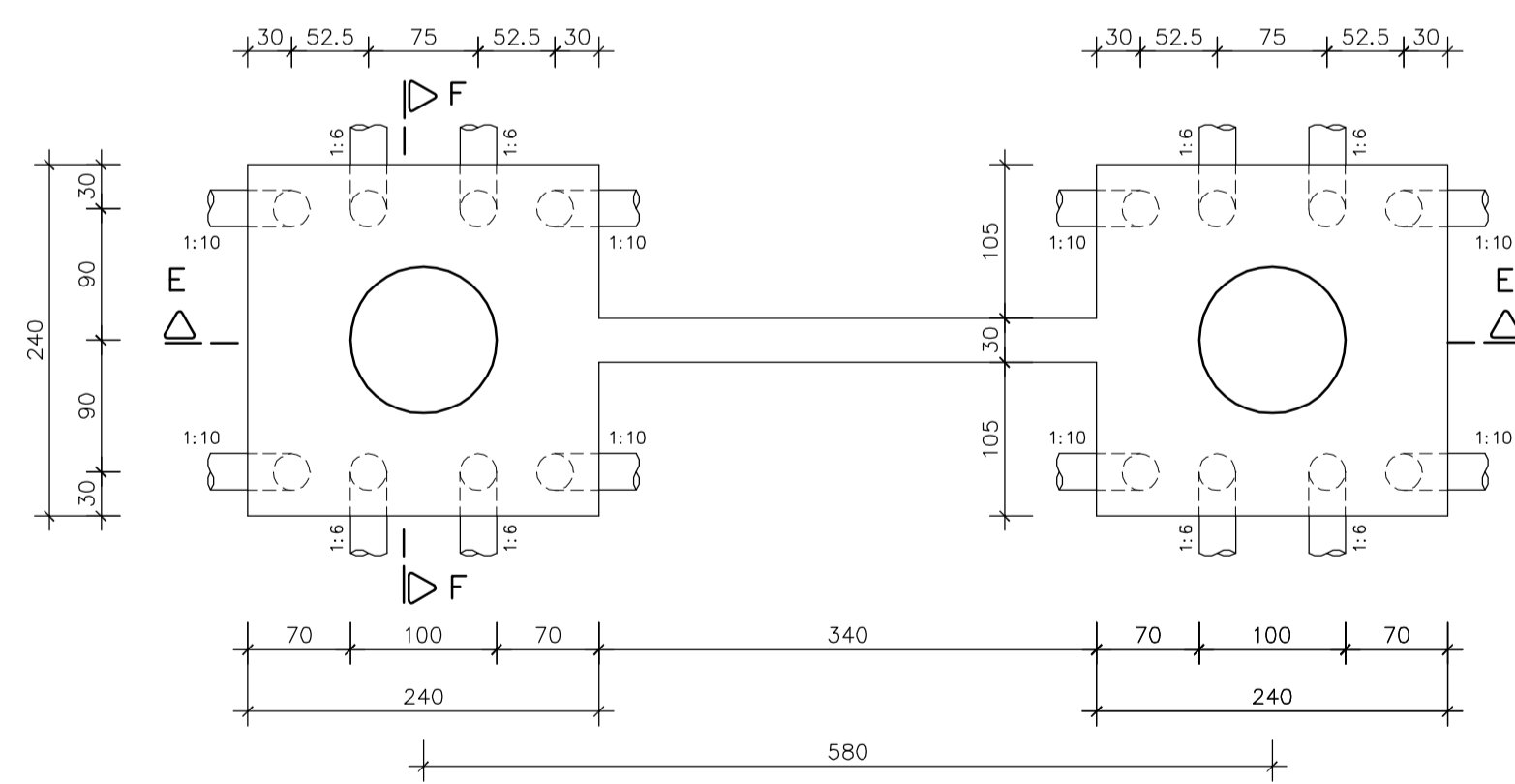


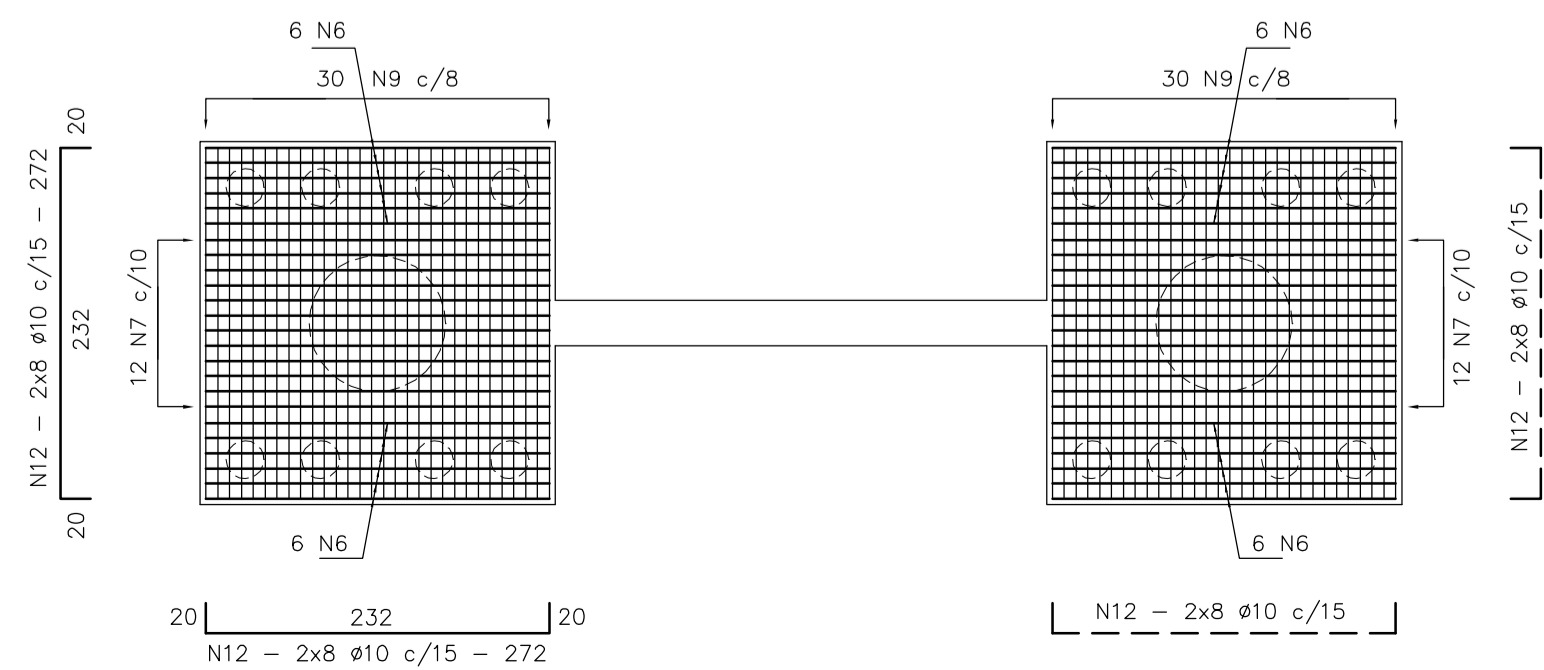
PILAR P1 e P2
ESC. 1:50



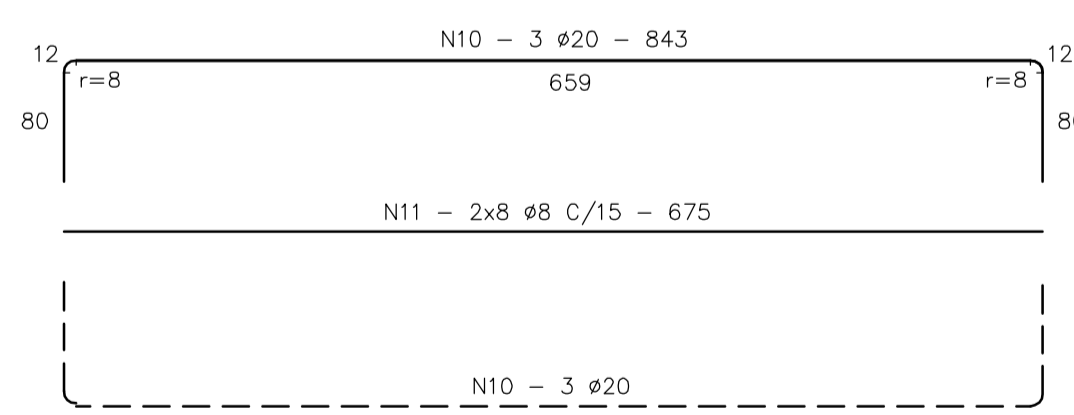
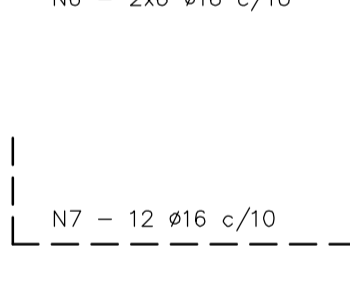
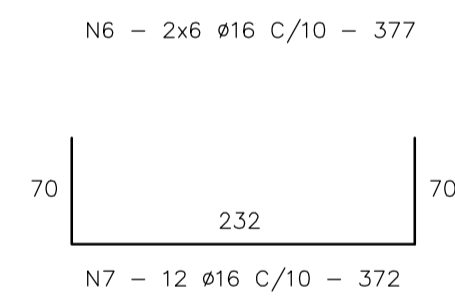
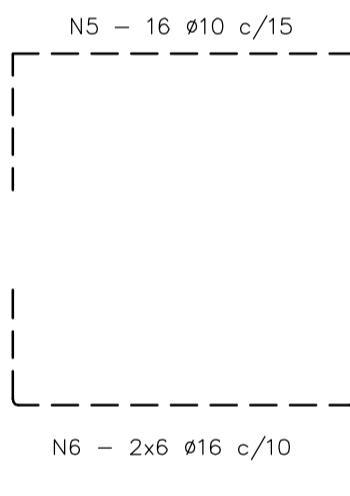
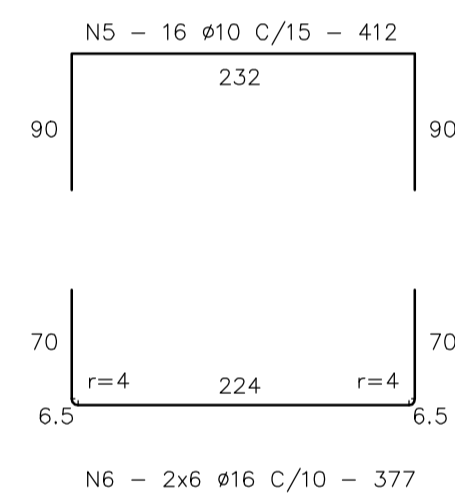
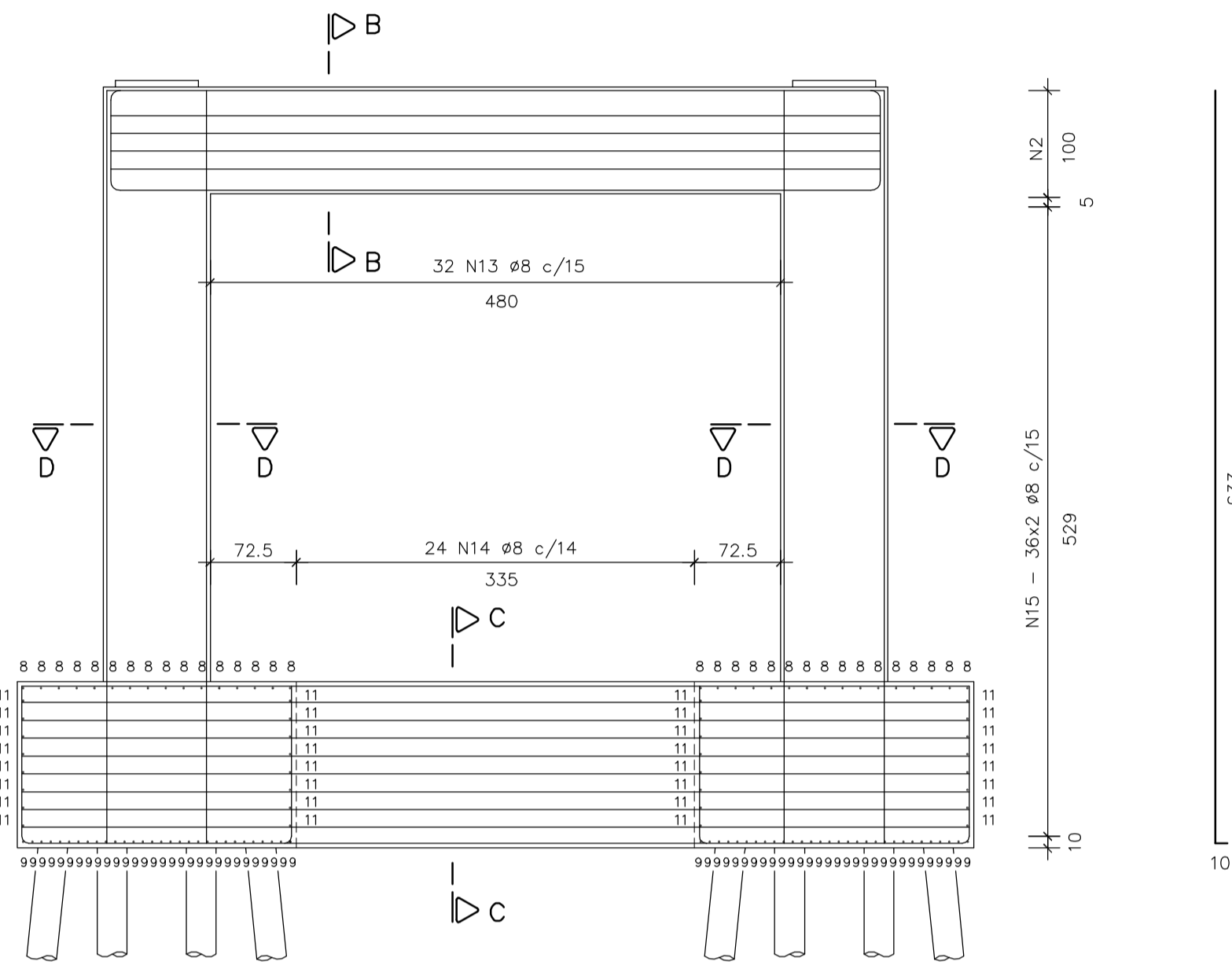
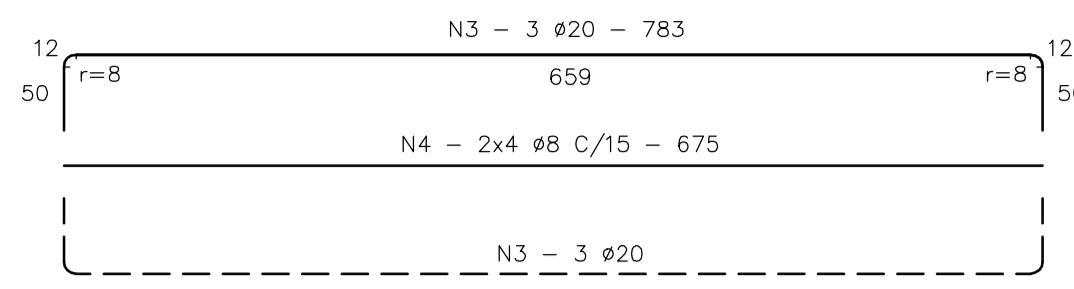
CORTE AA
ESC. 1:50



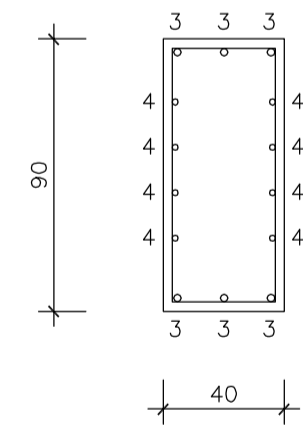
ARMADURA dos BLOCOS
ESC. 1:50



CORTE EE
ESC. 1:50

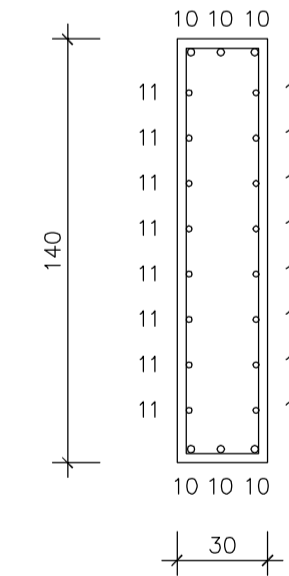


CORTE BB
ESCALA 1:25



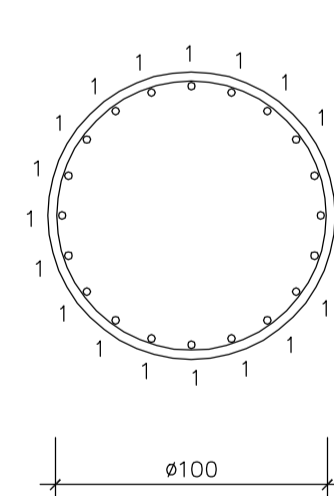
N13 - 3 #8 C/15 - 254

CORTE CC
ESCALA 1:25



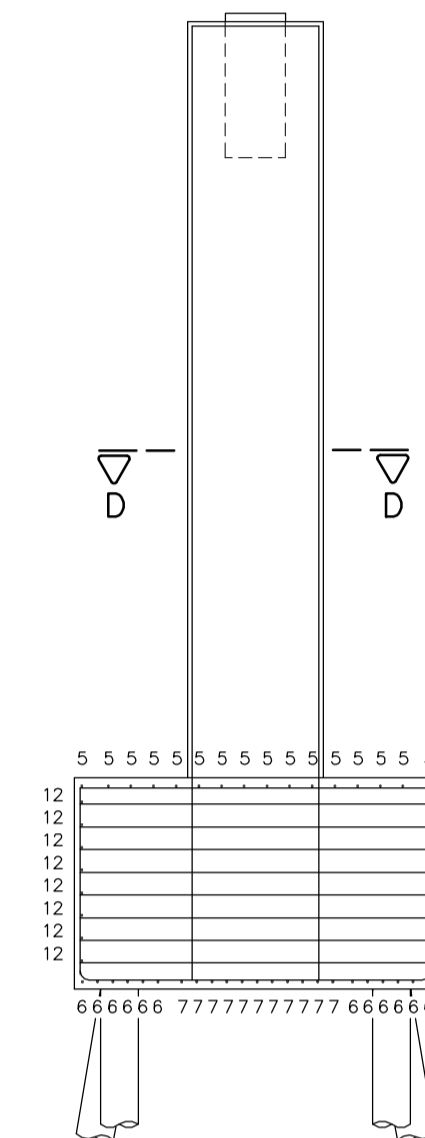
N14 - 24 #8 C/14 - 332

CORTE DD
ESC. 1:25

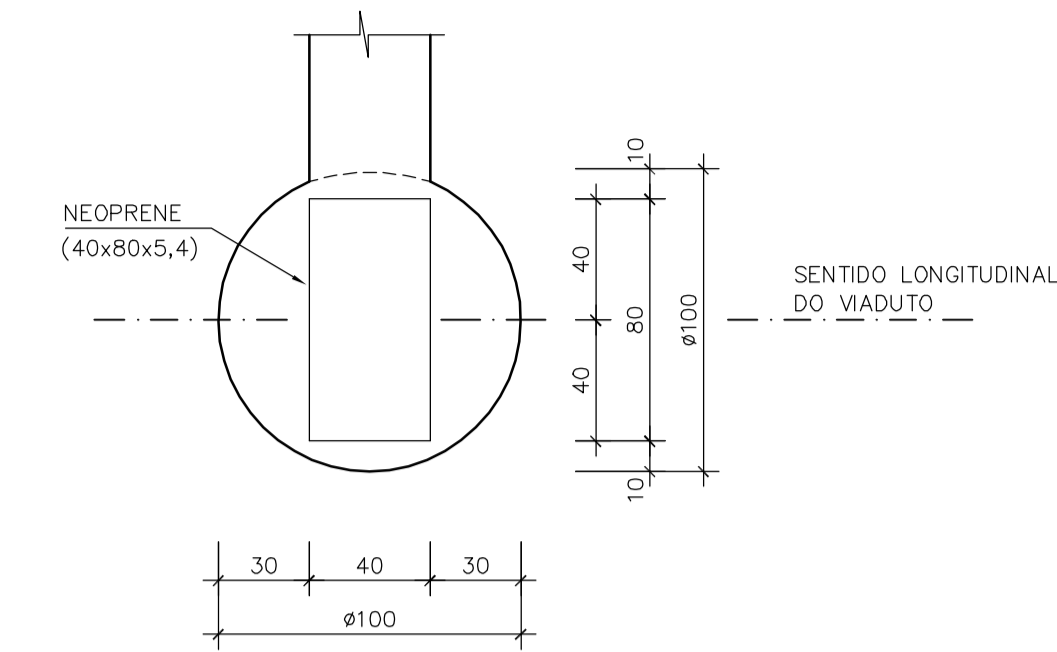


N15 - 2x36 #8 C/15 - 352

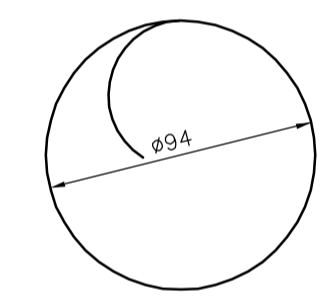
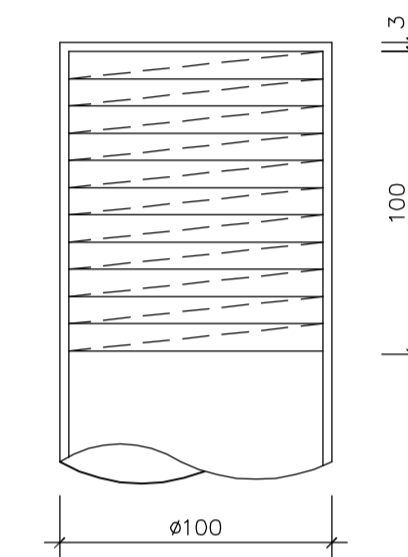
CORTE FF
ESC. 1:50



TOPO DO PILAR
LOCAÇÃO DO NEOPRENE
ESC. 1:25



FRETAGEM NO TOPO DO PILAR
ESC. 1:25



N2 - 1 #10 PASSOC/9 - 3542

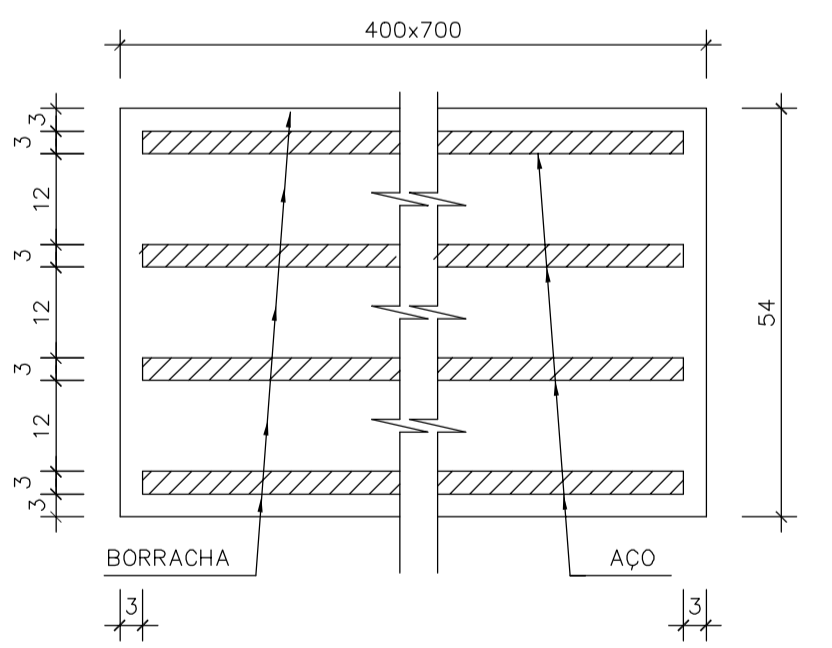
TABELA DE COMPRIMENTOS

N	Ø	Q	COMPRIMENTO (m)	
			UNITÁRIO	TOTAL
AÇO CA - 50				
1	20	80	6,43	514,40
2	10	4	35,42	141,68
3	20	12	7,83	93,96
4	8	16	6,75	108,00
5	10	64	4,12	263,68
6	16	48	3,77	180,96
7	16	48	3,72	178,56
8	16	64	4,12	263,68
9	16	120	3,77	452,40
10	20	12	8,43	101,16
11	8	32	6,75	216,00
12	10	128	2,72	348,16
13	8	64	2,54	162,56
14	8	48	3,32	159,36
15	8	144	3,52	506,88

RESUMO DE AÇO

Ø	COMPRIMENTO TOTAL (m)	PESO (kg)	
		UNITÁRIO	TOTAL
AÇO CA - 50			
8	1152,80	0,40	461,12
10	753,52	0,63	474,72
16	1075,60	1,60	1720,96
20	709,52	2,50	1773,80
PESO TOTAL =		4.430,60kg	

DETALHE DO NEOPRENE
ESC. 1:1 (MEDIDAS EM MILÍMETROS)



NOTAS:

- AS UNIDADES DE MEDIDA NÃO INDICADAS ESTÃO EM CENTÍMETROS
- CONCRETO fck = 20 MPa

0	Emissão inicial - Minuta do Projeto Executivo	19/10/06	NS	CM
Revisão	Descrição	Data	Aprov.	Aut.
Aprovação	ECOPLAN	Autorização	ECOPLAN	
Elaboração	CEHAB	Revisão	CEHAB	
Edição	Jorge M. Basler	Referência Ecoplan:		
S.D.U. COMPANHIA ESTADUAL DE HABITAÇÃO E OBRAS		CEHAB		
ESCALAS: Ferrovia: Transnordestina				
INDICADA Trecho: Parnamirim - Araripina (112,6 km)				
Lote: 3				
DATA: OUT/06	PONTE FERROVIÁRIA SOBRE A BR-122	FOLHA/TOTAL		
	FORMAS E ARMADURAS DOS PILARES	03-06		