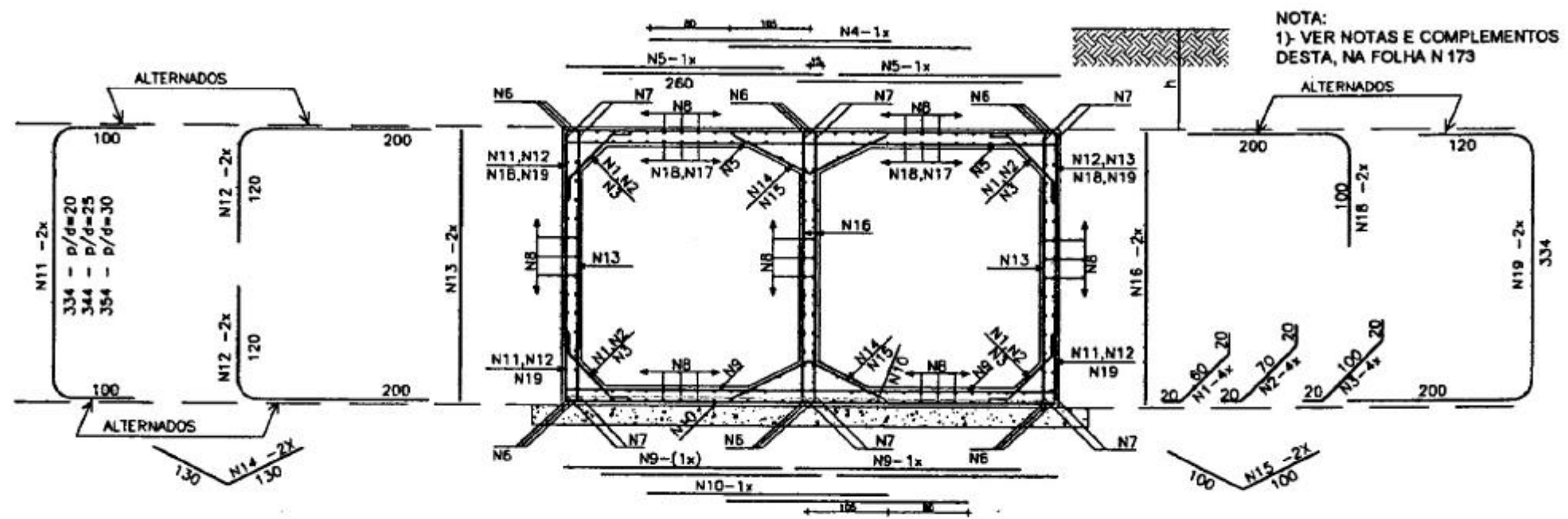


TABELA DE ARMADURAS (POR METRO DE GALERIA)

0 ≤ h ≤ 100					100 ≤ h ≤ 250					250 ≤ h ≤ 500					500 ≤ h ≤ 750					750 ≤ h ≤ 1000					1000 ≤ h ≤ 1250					1250 ≤ h ≤ 1500																	
f _s ≥ 0,20 MPa					f _s ≥ 0,15 MPa					f _s ≥ 0,15 MPa					f _s ≥ 0,20 MPa					f _s ≥ 0,25 MPa					f _s ≥ 0,29 MPa					f _s ≥ 0,34 MPa																	
N	Ø	Q	COMP	ESP.	N	Ø	Q	COMP	ESP.	N	Ø	Q	COMP	ESP.	N	Ø	Q	COMP	ESP.	N	Ø	Q	COMP	ESP.	N	Ø	Q	COMP	ESP.	N	Ø	Q	COMP	ESP.	N	Ø	Q	COMP	ESP.								
1	—	—	—	—	1	—	—	—	—	1	—	—	—	—	1	—	—	—	—	1	—	—	—	—	1	—	—	—	—	1	—	—	—	—													
2	6,3	20	100	c/20	2	6,3	20	100	c/20	2	6,3	20	110	c/20	2	6,3	20	110	c/20	2	—	—	—	—	2	—	—	—	—	2	—	—	—	—													
3	—	—	—	—	3	—	—	—	—	3	—	—	—	—	3	—	—	—	—	3	8,0	16	140	c/25	3	8,0	16	140	c/25	3	8,0	16	140	c/25													
4	16,0	6	290	c/15	4	12,5	5	290	c/20	4	12,5	5	290	c/20	4	16,0	6	290	c/15	4	16,0	7	290	c/13	4	16,0	10	290	c/10	4	20,0	6	290	c/15													
5	16,0	16	300	c/12	5	12,5	16	300	c/12	5	12,5	16	300	c/12	5	16,0	16	300	c/12	5	16,0	16	300	c/12	5	16,0	22	300	c/9	5	20,0	14	300	c/13													
6	16,0	18	CORR	—	6	12,5	18	CORR	—	6	12,5	18	CORR	—	6	16,0	18	CORR	—	6	16,0	18	CORR	—	6	16,0	18	CORR	—	6	20,0	18	CORR	—													
7	—	—	—	—	7	—	—	—	—	7	—	—	—	—	7	—	—	—	—	7	—	—	—	—	7	—	—	—	—	7	—	—	—	—													
8	6,3	196	CORR	c/20	8	6,3	196	CORR	c/20	8	6,3	196	CORR	c/20	8	6,3	196	CORR	c/20	8	8,0	154	CORR	c/25	8	8,0	154	CORR	c/25	8	8,0	154	CORR	c/25													
9	16,0	12	300	c/15	9	12,5	14	290	c/13	9	12,5	14	290	c/13	9	16,0	12	300	c/15	9	16,0	14	300	c/13	9	16,0	20	300	c/10	9	20,0	14	300	c/14													
10	16,0	7	290	c/14	10	12,5	5	290	c/20	10	12,5	5	290	c/20	10	16,0	7	290	c/14	10	16,0	8	290	c/12	10	16,0	10	290	c/10	10	20,0	6	290	c/15													
11	16,0	6	584	c/38	11	10,0	6	584	c/34	11	10,0	6	584	c/34	11	16,0	6	584	c/38	11	16,0	6	594	c/36	11	16,0	8	594	c/30	11	12,5	10	594	c/20													
12	16,0	12	320	c/38	12	10,0	12	320	c/34	12	10,0	12	320	c/34	12	16,0	12	320	c/38	12	16,0	12	320	c/36	12	16,0	16	320	c/30	12	12,5	20	320	c/30													
13	10,0	10	345	c/20	13	10,0	10	345	c/20	13	10,0	10	345	c/20	13	10,0	10	345	c/20	13	10,0	10	355	c/20	13	10,0	10	355	c/20	13	12,5	8	355	c/30													
14	—	—	—	—	14	—	—	—	—	14	—	—	—	—	14	—	—	—	—	14	8,0	8	260	c/25	14	8,0	8	260	c/25	14	8,0	8	260	c/25													
15	6,3	10	200	c/20	15	6,3	10	200	c/20	15	6,3	10	200	c/20	15	6,3	10	200	c/20	15	—	—	—	—	15	—	—	—	—	15	—	—	—	—													
16	10,0	10	345	c/20	16	10,0	8	345	c/25	16	10,0	8	345	c/25	16	10,0	10	345	c/20	16	10,0	10	355	c/20	16	10,0	10	355	c/20	16	12,5	8	355	c/30													
RESUMO					RESUMO					RESUMO					RESUMO					RESUMO					RESUMO					RESUMO																	
Ø	Kg/m	PESO(Kg)	Ø	Kg/m	PESO(Kg)	Ø	Kg/m	PESO(Kg)	Ø	Kg/m	PESO(Kg)	Ø	Kg/m	PESO(Kg)	Ø	Kg/m	PESO(Kg)	Ø	Kg/m	PESO(Kg)	Ø	Kg/m	PESO(Kg)	Ø	Kg/m	PESO(Kg)	Ø	Kg/m	PESO(Kg)	Ø	Kg/m	PESO(Kg)	Ø	Kg/m	PESO(Kg)	Ø	Kg/m	PESO(Kg)									
6,3	0,252	65	6,3	0,252	65	6,3	0,252	65	6,3	0,252	65	8,0	0,393	84	8,0	0,393	84	8,0	0,393	84	8,0	0,393	84	12,5	0,988	178	12,5	0,988	178	12,5	0,988	178	12,5	0,988	178	20,0	2,480	344	20,0	2,480	344	20,0	2,480	344	20,0	2,480	344
10,0	0,624	43	10,0	0,624	85	10,0	0,624	85	10,0	0,624	43	10,0	0,624	45	10,0	0,624	45	10,0	0,624	45	10,0	0,624	45	12,5	0,988	178	12,5	0,988	178	12,5	0,988	178	12,5	0,988	178	20,0	2,480	344	20,0	2,480	344	20,0	2,480	344	20,0	2,480	344
16,0	1,570	338	12,5	0,988	136	12,5	0,988	136	16,0	1,570	338	16,0	1,570	357	16,0	1,570	357	16,0	1,570	475	16,0	1,570	475	20,0	2,480	344	20,0	2,480	344	20,0	2,480	344	20,0	2,480	344	20,0	2,480	344	20,0	2,480	344	20,0	2,480	344			
TOTAL = 446,0 Kg					TOTAL = 286,0 Kg					TOTAL = 286,0 Kg					TOTAL = 446,0 Kg					TOTAL = 486,0 Kg					TOTAL = 604,0 Kg					TOTAL = 606,0 Kg																	

SEÇÃO TRANSVERSAL



0		Emissão inicial - Minuta do Projeto Executivo		19/10/06	NK	CM
Revisão	Descrição			Data	Aprov.	Aut.
Aprovação	ECOPLAN	Autorização		ECOPLAN		
	CEHAB			CEHAB		
Elaboração:	Verificação:	Revisão	Referência Ecoplan:			
Luciano Santarém	Jorge M. Basler	0	-			

S.D.U. COMPANHIA ESTADUAL DE HABITAÇÃO E OBRAS **CEHAB**

ESCALAS: Ferrovia: Transnordestina
Trecho : Parnamirim - Araripina (112,6 km)
Lote : 3

DATA: PROJETO DE DRENAGEM
OUT/06 Bueiros Duplos Celulares de Concreto Armadura de Corpo - 3,00x3,00

FOLHA/TOTAL
D-81