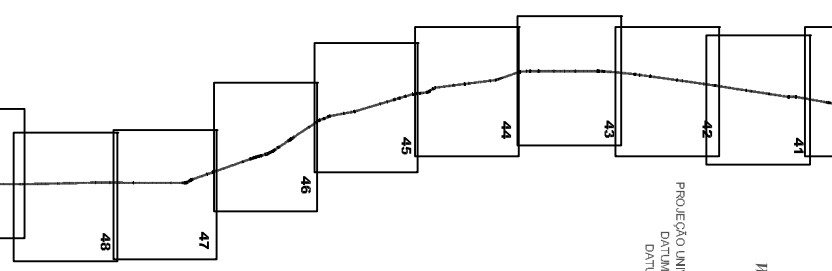
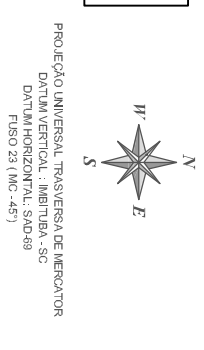









**Articulação**



**Legenda:**

-  Diretriz do Poliduto
-  Limite 142,89 m
-  Marco de Km
-  Válvula
-  Limite de Município



**PETROBRAS - Petróleo Brasileiro S.A.**  
 POLIDUTO - UBERABA - PAULINIA - TAUBATÉ

**MAPEAMENTO DO TRACADO**

MUNICÍPIO DE SERTÃOZINHO - Km 128 ao Km 129  
 MUNICÍPIO DE R. PRETO - Km 129 ao Km 130

Escala 1:10.000

ABRIL/2009